



# MONTA LOMA NEIGHBORHOOD NEWS

## ANNUAL MEETING

Join the Monta Loma Neighborhood Association for our annual meeting on Thursday, May 30, 2024.

Chat with neighbors, elect your board members, and listen to guest speaker Mountain View mayor Pat Showalter.

### LOCATION:

GoogleX / Rails meeting room,  
250 Mayfield Ave.  
(Southwest corner of Monta Loma Neighborhood)

Please arrive early. Google X/Rails has generously offered the use of their large meeting room, and will provide light snacks and beverages. Masks are optional.

See related articles on pages 2 and 3.

### SCHEDULE OF EVENTS:

7:00 pm Doors open for setup and socializing  
7:15 pm Meeting begins with President's update  
7:30 pm Introduction of candidates and voting  
7:35 pm Speaker: Mayor Pat Showalter  
8:30 pm Meeting concludes

## Block parties – Plan your 2024 Block party

Several block parties have already been planned for this summer and fall, and we look forward to more. A block party is a great way to meet your neighbors, build the camaraderie that helps keep our neighborhood safe, and compile a list of each other's contact information to share. To promote these goals, the MLNA will help pay for your party.

## BLOCK PARTY

It's wise to set the date for your street's party now. Note that to block off a street

you must obtain a permit and **allow at least 30 days** for it to be processed. For how-to information, including how to borrow orange safety cones and Road Closed signs, go to [www.montaloma.org](http://www.montaloma.org) and click **Block Parties** under Events. Scroll to the bottom of the page and click **printable version**.

Our Neighborhood Watch Captain, Tom Purcell on Alvin, would be happy to visit your party to meet your neighbors and discuss security. Contact Tom at [MontaLomaNBC@gmail.com](mailto:MontaLomaNBC@gmail.com).

## Save the date - The Ice Cream Social will be August 25, 3:00 to 5:00 pm



Mark your calendars! The annual neighborhood Ice Cream Social will be held at the Monta Loma Field on Sunday, August 25. It's a great opportunity to meet new neighbors and chat with old friends. Watch for details in the summer newsletter.

### IN THIS EDITION:

Monta Loma Board candidates	p. 2
The Rengstorff grade separation project	p. 4
LeQuy Vietnamese restaurant review	p. 6
Birding: The Hooded Oriole	p. 7

**President**

Nirvana Nwokidu  
[president@montaloma.org](mailto:president@montaloma.org)

**First Vice President**

Olga Bright  
[vp2@montaloma.org](mailto:vp2@montaloma.org)

**Second Vice President**

Open position

**Treasurer**

Andre Valente  
[treasurer@montaloma.org](mailto:treasurer@montaloma.org)

**Secretary**

Cheryl Smith  
[secretary@montaloma.org](mailto:secretary@montaloma.org)

**Members-at-Large**

Marilyn Gildea (communications)  
 Tricia DelGaudio  
 Jennifer Dell-Ernstrom  
 Caleb Fenner  
 Anish Morakhia  
 Baidra Murphy  
 Alan Whitaker

**MLNA Newsletter****Editor & Member-at-Large**

Jennifer Dell-Ernstrom  
[newsletter@montaloma.org](mailto:newsletter@montaloma.org)

**Layout & Member-at-Large**

Tricia DelGaudio  
[newsletter@montaloma.org](mailto:newsletter@montaloma.org)

**Advertising Manager**

Baidra Murphy  
[ads@montaloma.org](mailto:ads@montaloma.org)

**Illustrations/Photos**

If interested in contributing, please email the editor with content ideas. Submissions of relevant cartoons also welcome.

© 2024 by the Monta Loma Neighborhood Association. All rights, including electronic posting and distribution, reserved. Individual article rights revert to the authors, and permission must be obtained from them to re-use their articles in any way.

## 2024 ANNUAL MEETING INFO

### Meet your board candidates

We are fortunate to have a full slate of candidates for the board officers: Olga Bright is moving up from First Vice President to President, while Nirvana Nwokidu moves down to 1VP. Caleb Fenner will be Second Vice President, while Andre Valente has agreed to continue as Treasurer, and Cheryl Smith as Secretary. Members-at-large Jennifer Dell-Enstrom doubles as newsletter editor; Tricia DelGaudio as newsletter layout; Baidra Murphy as advertisement manager, and Marilyn Gildea as communications coordinator.

Members-at-Large Anish Morakhia and Alan Whitaker are retiring from the board. Anish worked on increasing the tree canopy and improving the city's parks. One of Alan's many projects was the very large dry-ice cooler for the Ice Cream Social. We thank them both for their contributions.



Olga Bright



Nirvana  
Nwokidu



Caleb Fenner



Andre Valente



Cheryl Smith



Jennifer  
Dell-Ernstrom



Tricia DelGaudio



Baidra Murphy



Marilyn Gildea

We are delighted to have a full slate of officers for this year's board election, plus several members-at-large. We welcome new board members. Because we meet online, there's no limit to the number who can sit around the board "table." Any resident or property owner is eligible to run, so if you would like to serve on the board, please contact Nirvana at [nirvana.official6@gmail.com](mailto:nirvana.official6@gmail.com) by May 25.

The election is expected to be uncontested, so we plan to vote by acclamation again this year, rather than by ballot.

Please join your neighbors for the annual meeting to formally elect this group of dedicated individuals.

Meeting details on page 1.

## Mountain View Mayor Pat Showalter - Guest Speaker at 2024 Monta Loma Annual Meeting



We are excited to have Mountain View Mayor Pat Showalter speak at the annual meeting and tell us about three projects that will affect our neighborhood:

- Rengstorff underpass project (see article on page 4).
- New city park planned for the lot at 538 Thompson Avenue.
- Proposed development for the San Antonio Corridor, which abuts Monta Loma.

## Meet your new neighbors at the annual meeting

The annual meeting on May 30 is an ideal opportunity to meet and chat with your neighbors and board members/candidates, both before and after the formal part of the meeting. New neighbors are especially welcome, and are invited to add a gold-star sticker to their name-tag label when arriving, so that long-time residents can meet and welcome them.

What defines a newcomer? Anyone who feels like one.

## A veterinarian comes to Monta Loma: A dream achieved

*By Sarah Doxiadis*

You and your pets can now find skilled and kind veterinary care close to home since the Shoreline Pet Hospital opened in March in Suite K at Monta Loma Plaza.

Owning and directing a veterinary practice has been a longtime dream for Christine Yee Huen-ing, DVM. Dr. Christine grew up in the area, and returned here to apply her formal training by working with several area veterinary practices. One of the benefits is that Dr. Christine has contacts with her peers, and knows the specialty vets in the area.

“Early bird” neighbors and their pets (including our three cats) quickly filled appointment slots well into April and beyond. The staff have taken it in stride, welcoming their clients with smiles, open arms, pet treats, and more.

Take the virtual tour offered on the website; note the useful tips and guides for working with your pets; and then schedule a visit. [shorelinepethospital.com/clinic](https://shorelinepethospital.com/clinic)

The more of us who enjoy using the pet clinic for routine – or occasional urgent – needs, the more we can add having a local vet clinic as another great benefit to being Monta Loma residents.



### Neighborhood Resources

#### Community Emergency Response Team (CERT)

Tim Slattery, 650-964-6389  
[CERT@montaloma.org](mailto:CERT@montaloma.org)

#### Neighborhood Watch Coordinator

Tom Purcell, 650-224-5110  
[MontaLomaNBC@gmail.com](mailto:MontaLomaNBC@gmail.com)

#### Traffic/Parking Liaison

Alan Whitaker, 650-279-3375  
[traffici liaison@montaloma.org](mailto:traffici liaison@montaloma.org)

#### Stay Connected with MLN

Subscribe to the email list at  
[montaloma-post.org](https://montaloma-post.org)

Find Monta Loma on  
[NextDoor.com](https://NextDoor.com)

#### MLNA Websites

[montaloma.org](https://montaloma.org)  
Referrals: [localwiki.org/montaloma](https://localwiki.org/montaloma)  
Webmaster: Việt Hoà Dinh  
[webmaster@montaloma.org](mailto:webmaster@montaloma.org)



### Thanks to those who delivered the March newsletter:

Cheryl Smith, Silke Gürlich, Tracey Ostebo, Jess Dang, Ivy Lu, Linda Powers, Olga Bright, Marian Grocholski, John Canata, Maria Har-noto, Diane McCleary, Leane Reelfs, Paul Kostka, Maria Nelson, Dave McCleary, Chuck & Cookie Henderson & Griffen Auckland, Andre Valente, Martha Elderon, Birgit Grundler, Andy Coe, Jennifer Dell-Ernstrom and Lars Ernstrom

Do you have an hour to spare? We welcome new volunteers, even if you can help only occasionally. It's a great way to get to know your neighborhood and get an hour's exercise.

Contact Linda Powers at  
[lindapowers.007@gmail.com](mailto:lindapowers.007@gmail.com)

## The Rengstorff grade separation project

By Sarah Doxiadis

As the electrification of Caltrain nears completion, bringing more frequent trains, the lowering of Rengstorff Avenue to pass under the tracks becomes more urgent.

The long-planned project is expected to begin work in 2026, and be completed in about two years. The project is headed by Caltrain, but other government and transportation agencies are involved. The City of Mountain View drafted its “shovel ready” plan in 2014. The environmental study has been completed, and drafts of the project are available to view.

Sacramento-based Kiewit Infrastructure, one of the companies bidding to oversee the project, contacted our neighborhood in early March to seek input from the neighborhoods most affected.

Sarah and Dox Doxiadis, who live closest to the intersection, and MLNA VP Olga Bright volunteered to represent the MLNA in an online discussion with Kiewit, held in March. Their two representatives were very interested in learning the issues that might impact our neighborhood.

## English Together – a wonderful volunteer opportunity

By Debbie Cunningham

For eight weeks beginning in January 2024, I had the great privilege of meeting one-on-one with a Spanish-speaking woman. We met through an organization called English Together. Reach SV (formerly Reach Potential Movement) matched me with Carmen, who is a “Mompreneur” at Reach SV (a mother who wants to start her own business). Instead of a “tutoring” setting, we practiced real-world scenarios, such as meeting with a schoolteacher on her child’s behalf, or writing a letter to a government office. Spanish-speakers have the opportunity to increase their confidence by practicing situations such as how to ask questions, clarify instructions, and communicate more clearly and effectively.

English Together was founded in 2021 by Guadalupe Valdés, the Bonnie Katz Tenenbaum Professor of Education Emerita at Stanford University. The 10-week program meets for

Our questions included:

- **Traffic:** How will vehicles, bicycles, and pedestrians be impacted during deconstruction and new construction? How will traffic be restricted from driving through Monta Loma to escape the construction?
- **Neighborhood entry and exit:** How will residents get into and out of the neighborhood? Will there be additional traffic lights?
- **Safety:** How will the fire station on Rengstorff at Montecito be able to function? The MVPD? What about access to schools?
- **Businesses and business access:** Which businesses will remain at the corner of Rengstorff and Central after the Shell gas station has left? Can customers reach them?
- **Artesian well:** Might this city well in the alley behind the shopping center, which was plugged in 2022-23, cause a problem?

We hope to have an update in June, when we expect Kiewit to notify MLNA who won the bid and what the next steps will be.

More information, including links to relevant websites, is at [montaloma.org](https://montaloma.org).



one hour once a week, on either a Monday or Tuesday night on ZOOM, and focuses on workplace English for Latino/a workers. It includes a one-time training meeting, eight weeks of meeting online, and a final wrap-up meeting. I feel good about contributing to Carmen’s communication skills, and hope that she and others can overcome the disadvantages of speaking only Spanish.

I encourage anyone wanting to meaningfully invest in another’s future to attend an online introduction meeting to learn more. (Both male and female practice partners are needed). If you speak English, you can make a difference. Information is at [englishtogether.org](https://englishtogether.org).



## Monta Loma Elementary School memories

By Tom Purcell, Alvin Street

As our younger child wraps up fifth grade, I wanted to reflect on our ten-year journey at our little school. Our older child started in Ms. Fox's kindergarten in 2014. We were excited to join the Monta Loma Elementary (MLE) community with its beautiful campus filled with bright happy children. The school's convenient location has been a huge plus. Some of my favorite memories are from the times I spent walking my children to school. When they were older, they were able to walk home on their own and with friends; another advantage.

At Monta Loma we've met many great teachers, dedicated to children's learning. Special thanks go to Ms. Fox, Ms. Cumming, Ms. Rich, and Mr. Ares.

Monta Loma has the unique honor of hosting the children from the military families based at Moffett Field. Our kids have made friends with children from all over the country, although it's sometimes bittersweet when their families move on to new postings.

There have been challenges at Monta Loma. In 2019, the district redrew its school-assignment boundaries, which reduced the student population. The pandemic was a difficult time for all schools. Despite this, our school remains a vibrant and diverse community of students, educators, and parents. Our PTA does a tremendous job of fundraising for the school and organizing entertaining events for the school community such as the Fall Festival and the Walk-a-Thon in the spring.

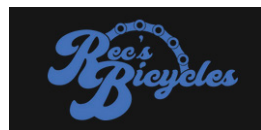
Katie and I are so grateful for our time as Monta Loma parents, and we encourage our neighbors to consider it for their children.

## Rec's Bikes – a new neighborhood business

By Shelly Ostman

There is a new bike repair shop on Sierra Vista at Old Middlefield (behind the 7-Eleven) called Rec's Bicycles. We had two bikes serviced (tune up, new treads, cables) and are very satisfied. Rec is friendly and capable and working hard to get his shop off the ground. If you are in need of bike services, check him out, [recsbikes.com](http://recsbikes.com)!

Rec's Bicycles  
740 Sierra Vista Ave. Suite C  
650-695-5101



## Village Harvest helps Monta Loma share the abundance of their gardens

Do you have a home fruit tree, or trees, that produce more fruit than you can use? Many Monta Loma neighbors throughout the past 20 years have shared their fruit via Village Harvest, a Peninsula and South Bay non-profit that helps home- and orchard-owners donate their extra fruit to local food banks. They organize groups of volunteers to harvest or pick up fruit – for free! – and bring it to community partners such as Community Services Agency (CSA) in Mountain View and Second Harvest of Silicon Valley.



On March 23, Orchard Harvest Coordinator and MLN neighbor Megan on Lassen organized a neighborhood citrus harvest for donation. Eighteen volunteers picked about 900 pounds of oranges, grapefruit, and lemons at eight Monta Loma homes. Neighbors who picked their own fruit dropped off another 400 pounds at the donation bins the following day.

The weekend effort resulted in approximately 1,300 pounds of fruit headed to the Second Harvest food bank for families in need. What a great accomplishment!

Megan hopes to organize a neighborhood persimmon harvest this winter. If you think you'll have extra persimmons to donate, or if you're interested in volunteering to help pick, contact Megan at 254 Lassen or [megan.l.elmore@gmail.com](mailto:megan.l.elmore@gmail.com). For more information about Village Harvest, visit [villageharvest.org](http://villageharvest.org)

## Join the new parent group meetup in Monta Loma Park

By Ella Gille



We have moved the new-parent get-together several times to account for naps, weather, and schedule changes. The new time is 4:00 on Saturdays at Monta Loma Park. Please feel free to join us on the lawn near the sandbox with a picnic blanket. We welcome both parents and expecting parents. Learn more by contacting me at [ella.gille14@gmail.com](mailto:ella.gille14@gmail.com) or join the Facebook group for "Monta Loma New Parents".

## LeQuy Vietnamese restaurant pleases all palates

By Heather Schoell

On a recent Saturday evening, we had dinner at LeQuy, a Vietnamese restaurant near Piazza's on Middlefield, not realizing it was the one-year anniversary of that location.

LeQuy also has had a location in Campbell for 19 years, and the owner, Phong, decided it was time to expand once he found the location in South Palo Alto. We arrived around 5:30 and were the first, but that didn't last long as a steady stream of diners came both to dine in and pick up food to go, and when we left the restaurant more than an hour later, the place was full.

We tried some standard dishes and some new ones. We started with fried calamari, a favorite of our kids, and this calamari was slices of calamari steak, so it was more like squid fries. They were served hot and disappeared off the plate quickly. A savory and sweet favorite was the Clay Pot, which we ordered with pork, but you could choose between pork, beef, or shrimp, or a combination. Another special is the Combination Dry Noodles served with a mixture of seafood and pork, with a delicious broth on the side. Of course,



we had to try a noodle soup, so we tried one new to us, the Beef Stew Noodles, with large chunks of soft beef served in a very flavorful broth with egg noodles. The Crab Fried Rice was also good and hearty, and made for excellent next-day leftovers as we had been luxurious with our ordering to ensure we could try a variety of dishes.

The restaurant atmosphere is casual and comfortable, full of green plants making for a slightly tropical vibe. We enjoyed dining in, but it would also be great food for take-out for lunch or dinner. They also serve Bánh Mì sandwiches with filling options including beef, pork, chicken, and a vegan version with mushrooms and tofu. Another item that's great for appetizers or lunch is fresh spring rolls with several filling options. The server who chatted with us said another favorite of the guests is their Wagyu Pho - a premium version of the Vietnamese classic noodle soup.

In the past, our kids have said that Vietnamese food wasn't their favorite, but by the end of this meal, plates were clean, everyone was full and happy, and we look forward to going back. The menu has enough variety to please all palates. We highly recommend LeQuy for lunch or dinner, dine in or take out.

LeQuy is at 3906 Middlefield Rd, Palo Alto, in the Charleston Shopping Center.

### HELMING'S AUTO REPAIR

Complete Car Care and Maintenance  
*Serving the Community Since 1976!*

- Owned by a Monta Loma Family
- Most Makes and Models
- Convenient 24-hour Drop-Off/Pick Up
- Certified Bay Area Green Business
- Superior Service You Can Trust
- A Certified Smog Check Facility

*We do buyer's inspections when  
you buy a used car!*



Always a great job --  
I can trust Helming's  
crew to make recom-  
mendations to keep  
me safe." - Judy S.



**Helming's Auto Repair**  
2520-G Wyandotte Street  
Mountain View, CA 94043  
**www.helmings.com**  
**650-988-0460**



### NOTARY PUBLIC *And* REALTOR

**Contact Me:**  
**650-435-2349**  
nirvana.nwokidu@gmail.com

**kW** BAY AREA  
ESTATES  
KELLERWILLIAMS.  
**DRE# 02142853**



A Proud Monta Loma Resident  
**NIRVANA NWOKIDU**

# BIRDING IN MONTA LOMA

## The Hooded Oriole

By Dotty Calabrese

By far, the most exotic bird that summers in the Monta Loma Neighborhood returns here from its wintering grounds in neotropical areas of Mexico by early April. The Hooded Oriole is a slender, 7-inch bird with a medium thick, sharply-pointed, slightly down-curved, slate-colored bill. The breathtaking male has a black chin, throat, face, tail, and back; black wings with two white bars; and a majestic yellow-orange head, abdomen, and rump. The duller colored female is greenish-gray above and yellowish below, with two white wing bars. The immature male looks similar to a female, but has a black throat patch. Its diet consists of a variety of insects, with smaller amounts of fruit and nectar.

Hooded Orioles nest in our neighborhood, building hanging, woven, cup-shaped nests in palm trees and other tall trees. A successful pair will raise two broods of three, four, or even five chicks in one summer. If you are lucky enough to locate a nest hanging among the palm fronds, you may be able to follow the parents incubating the eggs for up to 14 days, then feeding the babies in the nest for another two weeks. After that, you may see the parents feeding the young in trees or at hummingbird or oriole feeders.

If you're interested in close-up looks at these gorgeous birds,

Male Hooded Oriole



Photos by Tom Grey - [tgreybirds.com](http://tgreybirds.com)  
Reprinted with permission.



Female Hooded Oriole

hanging an oriole feeder as early as mid-March, where you can see it from a window, is a good way to observe them regularly through August or September. Local pet stores don't usually carry oriole feeders, but specialty bird shops do. An online search on "oriole feeder" will reveal hundreds of web sources. Most start at about \$16 or \$17, and allow you to feed nectar (sugar water), jelly, and oranges in one easy-to-clean feeder. This feeder will also attract hummingbirds. Or, take the yellow bee guards off your hummingbird feeder to attract Orioles, as well as Chestnut-Backed Chickadees, House Finches, and, of course, occasional bees. After hanging my first oriole feeder in March 2003, and watching Hooded Orioles - males, females, and juveniles - feed in my yard all summer long, I'm hooked!

Visit [www.mbr-pwrc.usgs.gov/id/framlst/i505oid.html](http://www.mbr-pwrc.usgs.gov/id/framlst/i505oid.html) for a good description of the hooded oriole and to hear its song.

Email your bird questions to me at [dottycala@aol.com](mailto:dottycala@aol.com).

## Thank you to little free librarians

When the pandemic hit, I stopped frequenting the library sales, instead checking out our neighborhood's many Little Free Libraries. My literary horizons expanded considerably, from almost 100% science fiction to general fiction. I've found so many great books, including *Disappearing Earth*, *The Tiger's Wife*, *The Only Woman in the Room*, *Bee Season*, *Bean Trees*, and, most recently, *Amazing Grace Adams*.

So, a big thanks to all you Monta Loma librarians!

Bob on Diablo Ave.

Check out this web page for the location of our local libraries: [montaloma.org/little-free-libraries/](http://montaloma.org/little-free-libraries/).



## Mail collection box on Alvin at Victory

By Jessie Holombo

Two days after Christmas thieves with a power tool attempted to break into the mailbox on Alvin at Victory but were unsuccessful. The damaged mailbox was removed by the postal service and has not been replaced.

Currently the only other neighborhood mailbox is located on Thompson Ave. at Laura.

If you would like to petition to get the Alvin mailbox replaced, please write to Postmaster, 1070 La Avenida St., Mountain View CA 94043.

My hope is that if enough neighbors request a replacement mailbox, we will get one installed again in this part of the neighborhood. Thank you for your consideration.



# FLOWERS AROUND MONTA LOMA

## **Phacelia tanacetifolia (Lacy phacelia):**

*Submitted by Alan Whitaker.*

This is an easy to grow annual flower that sprouts from seed and spreads during winter rains. It attracts many bees and pollinators and fades away as spring days become warmer. The spent plants make great water-saving mulch around perennial plants or in the vegetable garden.



## **Poetry:**

*Submitted by Maryellen Wolfers*

Maryellen lives on Palmer and has written some lovely poems about her garden.

### **Mature**

My garden is mature  
After 33 years

The Clematis has climbed  
All over the pergola

The Oleander has spread  
As tall and wide as a tree



The Morning Glory obscures  
My bedroom window from my neighbor's

The Hardenbergia has outgrown  
The support it needed long ago

The Pride of Madeiras have  
Multiplied front yard to back

The Lantana roves in droves  
Along side my driveway

The Wisteria blooms purple  
Outside my office window

My garden and I have grown in many ways  
Since we planted ourselves here  
Thirty-three years ago

## **Poetry:**

*Submitted by Cheryl Smith*

This was a poem Cheryl wrote several years ago in a class.

### **Five Ways to See the Calla Lilies**

1

The dictionary defines you,  
Dear lily,  
As a greenhouse  
Plant with a spathe  
Surrounding a spadix  
Silly silly calla lily  
You get to nestle there  
Amongst the spatulas and spandex.

2

Upside-down split skirt  
Of pure, starched white  
Piston the hint of a thigh  
We twirled you round  
Making acceptance speeches  
In grand style  
Sitting on top of the tree house.

3

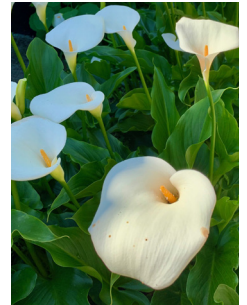
Looking all the world like  
Maria Calla's shawl  
Tossed back around impossibly  
Thin shoulders  
Throats open wide  
Her voice came pouring out yesterday  
Cacophony among the calla lilies.

4

You washed my hair the week before  
And made fun of my knowledge of cheese.  
Now I imagine your blond hair  
Still brushing my face  
And send calla lilies to your funeral.

5

Brown at the edges like burnt tissue paper  
Arms flopped on the ground  
At the first warm breath  
Callous, callous calla lily.





## Welcome Team updates – Next Meet and Greet is June 22

By John Canata

The Welcome Team thanks all of you who have let us know about new residents in the neighborhood, and welcomes any information about new neighbors. We also thank our regional ambassadors for helping us learn about new residents.

At our last meet and greet at Starbucks, welcome team members Andrea Thomas and Brad Ostman greeted one new resident, and chatted with many people from outside Monta Loma who were amazed that a neighborhood would have such an event for the benefit of the neighborhood.

Our next Meet and Greet will be on Saturday, June 22, at our local Starbucks from 10:00 to 11:30 am. Although primarily designed to give new residents a more detailed look at the Monta Loma area, all are welcome.

We regret that team members Brad and Shelly Ostman are leaving Monta Loma. They have been here for 28+ years, and have both been instrumental in helping the Welcome Team progress. We will miss them, and thank them sincerely for all the time and effort they have put into making the Welcome Team so successful.

If you have questions or want to become a part of the Welcome Team, please email us at [welcome-team@montaloma.org](mailto:welcome-team@montaloma.org) or call me at (650) 269-5646.



### Kids of all ages!

Submit your art, jokes, or games to [newsletter@montaloma.org](mailto:newsletter@montaloma.org)



Answer on bottom of page 10

Successfully serving  
Monta Loma for  
more than 20 years

*How can I help you?*



## Nancy Adele Stuhr

Mountain View Neighborhood Specialist

**650.575.8300**

[nstuhr@sereno.com](mailto:nstuhr@sereno.com)  
[www.nancystuhr.com](http://www.nancystuhr.com)  
CalDRE# 00963170

CHRISTIE'S  
INTERNATIONAL REAL ESTATE  
SERENO

sereno  
**1% For Good**  
CHARITABLE FOUNDATION

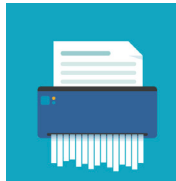
## Arbor Day Tree Giveaway Program

To register for a free tree by August 1, go to [mountainview.gov](https://mountainview.gov) and type **Arbor Day Tree Giveaway** in the Search box.



## Confidential paper shredding July 13

The next shredding opportunity is scheduled for Saturday, July 13, from 8:00 to noon at the SMaRT Station, 301 Carl Rd. in Sunnyvale. Proof of residency is required. Read the Document Shredding Guidelines to ensure your items will be accepted. Event details are at [mountainview.gov/our-city/departments/public-works/recycling-zero-waste/events](https://mountainview.gov/our-city/departments/public-works/recycling-zero-waste/events)



You may want to arrange a carpool via the MLN email list.

If you shred at home, please put the shreds in paper bags, stapled shut, so they won't litter the street when the recycling cart is emptied.



# MIDDLE & HIGH SCHOOL MOUNTAIN VIEW CAMPUS

LEARN MORE & ENROLL:  
[WALDORFPENINSULA.ORG](https://WALDORFPENINSULA.ORG)



## The air we breathe

By Leane Reelfs, The Car Gal at Helming's Auto Repair

This time of year is so beautiful with all the flowers blooming, and the trees full and leafy again, but the pollen is prolific! Fortunately, particularly for those with allergies, car makers put filters in our cars to minimize the impact of pollen (and smog particulate) while driving.



Our cars have two filters: One to filter the air that goes into the engine, and one to filter the air that comes into the cabin through the vents. The cabin air filter can get especially dirty and impacted with leaves and debris because of its location – under the dash, near where leaves accumulate at the base of your windshield, usually on the right side. Nearly every cabin air filter we inspect needs replacing if you park under a tree. They become compacted with leaves and pollen.

In general, it takes a little time to replace them...you often must remove the glove box, but it is something a handy person can do. And the engine's air filter is generally very easy to change and should be checked and changed as well. Our guys shine a flashlight through it to see how much light gets through when it doesn't look terribly dirty but does need replacing.

We have had people ask about HEPA filters for cars. They do exist, but you can run into problems with the blower motor working really hard to push the air through the denser filter, putting strain on the blower motor. Same with if you've been driving around with an impacted cabin air filter. Once you change it, you will be surprised how much more air comes through.

Our shop manuals recommend changing cabin and engine air filters every 15,000 to 30,000 miles, but if you live in a dusty area, have an extreme fire season, or are sensitive to pollen, change it more frequently, like once a year. And if you park under a tree, try to make it a habit to sweep, scoop, or blow the leaves out from under the hood periodically. Your car will thank you for it!



Joke answer from page 9

she wanted to  
see a butterfly!

## Monta Loma School News: From the PTA

By Tanya Ngo, President

As we approach the end of the school year, the PTA would like to express our sincere gratitude to the entire Monta Loma Elementary community. We especially want to acknowledge the support we received for our Walk-a-Thon. Despite the rainy weather, school spirit was high, and together we exceeded our goal and raised an amazing \$20,740! These funds will directly benefit our students by providing enriching field trips, supplies, a wider selection of library books, and more. Thank you for supporting not only neighborhood families, but also families stationed at the military base.

We will host our annual new-families playdate, aka Juice Box Social, in early August. The date is TBD, so to get updates, please join our communication platform Konstella by scanning the QR code. You don't need to be a PTA member to join.

Have a wonderful summer!



## Makers of Monta Loma – Next meeting June 22

By Jeff Kaiser

If you make things and would like to meet neighbors who make things, join a get-together on Saturday, June 22, from 2:00 to 4:00 in the courtyard of my home at 247 Diablo Avenue. If you would like to show things that aren't portable, bring photographs or a sample. Ages 18 and up only, please.

An email announcement with more details will be sent a few weeks before the event. Snacks to share are welcome.

*As I was delivering today I was struck by how much the newsletter both symbolizes and contributes to the Monta Loma strong sense of community.*

## Selling Homes For Top Dollar In Mountain View Over 25 Years...

### HOW WE CAN HELP YOU...

With no obligation we have helped many Sellers in Monta Loma with the following:



### NOT SELLING SOON?

- Great up-to-date ideas for home improvements with minimal investment, as well as medium to large sized remodeling projects
- Access to our Rolodex of tradespeople
- Names of local lenders for re-fi and lines of credit

### SELLING WITHIN 3 YEARS?

Unfortunately, most people improve their home just before they sell and never enjoy those upgrades...how sad!

- Call us for a walkthrough to share our proven market-preparation upgrades that provide the biggest bang for your buck / ROI when you are ready to sell
- Understand the true value of your home verses what the websites say which are traditionally inaccurate
- Access to our Rolodex of tradespeople for those improvements
- *Considering selling in 2023...call us for a zero-obligation consultation. Our Plan-Of-Action will ultimately provide the highest possible price for your home*



**SHELLY POTVIN**  
REALTOR®

**650.303.7501**

shelly@sereno.com

**ShellyPotvin.com** | DRE 01236885

**sereno**

**CHRISTIE'S**  
INTERNATIONAL REAL ESTATE

**MICHAEL SUTTON**  
REALTOR®

**650.799.2253**

sutton@sereno.com

DRE 01916467 | **MichaelSuttonRealtor.com**







**New Patients Welcome  
Friendly Exceptional Services**

**Shirley Irudayaraj DDS**  
**10090, Pasadena Ave Unit A1**  
**Cupertino, CA 95014**  
**Call 408 498 0244**  
[www.dovedentalsmiles.com](http://www.dovedentalsmiles.com)

## Pacific Ballet Academy

CLASSES FOR ALL AGES  
7 DAYS A WEEK  
FREE TRIAL CLASSES  
ADULT DROP IN CLASSES

📞 650-969-4614  
📱 @pacificballet  
📍 [pacificballet.org](http://pacificballet.org)



DAVID'S SELLERS IN 2023  
RECEIVED ON AVERAGE

**104%**  
OF LIST PRICE.



THE TROYER GROUP

WHAT CAN DAVID DO FOR YOU IN 2024?

DAVID TROYER  
DAVID@DAVIDTROYER.COM  
650.440.5076  
DAVIDTROYER.COM  
LIC#01234450

INTERO  
A Berkshire Hathaway Affiliate

BAIDRA MURPHY, Managing Broker  
PROUD MONTA LOMA RESIDENT  
650.383.7201  
BAIDRA@DAVIDTROYER.COM  
LIC#01216142

## *Serving Monta Loma for More than 42 Years!*



**Work with an Agent Who  
Knows Your Neighborhood!**

*If selling your home  
is in your plans for this year,  
be sure to contact...*

*Lynne Mercer  
The Monta Loma Specialist*

**Lynne Mercer**

650.906.0162 • [LMercer@compass.com](mailto:LMercer@compass.com)  
DRE 00796211 • [LMercer.com](http://LMercer.com)

COMPASS