



# MONTA LOMA NEIGHBORHOOD NEWS

## THE HOLIDAYS ARE HERE!

Monta Lomans have planned many exciting festivities this holiday season. Favorite traditions and new experiences await as we adapt our celebrations to “the new normal.”

Stop by the first Monta Loma Open Studios in November, donate to the Monta Loma Second Harvest Food Bank fundraiser, visit Ernie's Trains, go on a scavenger hunt, and enjoy the Nutcracker ballet to get in the holiday spirit. Details for all these events and more in this newsletter.

### Kick off the Holidays with the First Monta Loma Neighborhood Open Studios

By Marleen Nyst and Dotty Calabrese

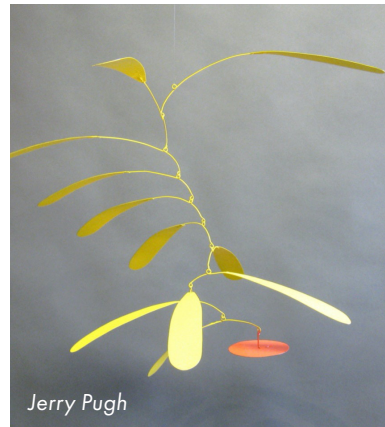
The Monta Loma Open Studios 2-day event will be held over the weekend of November 13/14 (11 a.m.-4 p.m. both days) with a rain date weekend of November 20/21 this year. During the Open Studios weekend, all the interested neighborhood artists, craftspeople, makers, and tinkerers (young and old: children and youth are welcome) open up their studios, workplaces, or front or back yards to the rest of the neighborhood to share their work, demonstrate their process, showcase their craft, and/or potentially sell their products.

If you are interested in participating as an artist, please email Marleen or Dotty who would be very happy to add you to the event as a maker before 7 p.m. on Nov. 11. [marleennyst@gmail.com](mailto:marleennyst@gmail.com) / [dottycala@aol.com](mailto:dottycala@aol.com)

Artist works include paintings, photography, textiles, jewelry, sculpture, and woodworking.

A map of the different Open Studios with more information about each location can be found at [tinyurl.com/MLOSM](https://tinyurl.com/MLOSM). There is also a link to the map on the Monta Loma neighborhood website. Click the markers on the map to find more detailed information for each studio, including a few pictures of the featured work. This map will be updated regularly. Make sure you check the map before you attend on November 13th, to ensure you have the latest information. Bring your cloth bags for purchases.

COVID-19: Visitors are asked wear a mask as a courtesy, while visiting or hosting the Open Studios. Makers will have hand sanitizer available.



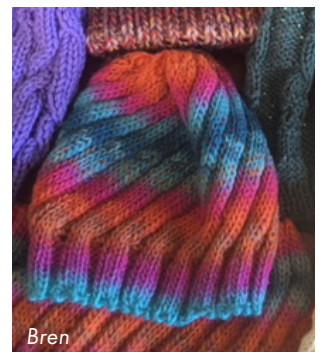
Jerry Pugh



Heather Schoell



Dotty Calabrese



Bren

#### IN THIS EDITION:

MLN Holiday Happenings	p. 2
Neighborhood Communications Updates	p. 5
Revived Grocery Store Worth a Visit	p. 8
New Feature: Neighbors Interviewing Neighbors	p. 10

## MLN HOLIDAY HAPPENINGS

### MLNA Board Members

Phone messages: (650) 691-5258

#### President

Tricia DelGaudio  
president@montaloma.org

#### First Vice President

Open Position  
vp1@montaloma.org

#### Second Vice President

Nirvana Nwokidu  
vp2@montaloma.org

#### Treasurer

Andre Valente  
treasurer@montaloma.org

#### Secretary

Baidra Murphy  
secretary@montaloma.org

#### Member-at-Large

Heather Schoell (newsletter)  
newsletter@montaloma.org

#### Member-at-Large

Marilyn Gildea (communications)  
Olga Bright  
member-at-large@montaloma.org

### MLNA Newsletter

#### Editor & Layout

Heather Schoell  
newsletter@montaloma.org

#### Advertising Manager

Baidra Murphy  
ads@montaloma.org

#### Illustrations/Photos

If interested in contributing, please e-mail the editor for content ideas. Submissions for relevant cartoons also welcome.

© 2021 by the Monta Loma Neighborhood Association. All rights, including electronic posting and distribution, reserved. Individual article rights revert to the authors, and permission must be obtained from them to re-use their articles in any way.

## Monta Loma Neighborhood Holiday Fundraiser

Every year during the holidays, the Monta Loma Neighborhood Association raises funds for the Second Harvest Food Bank. Any amount is welcome and your generosity is much appreciated. Each dollar donated provides enough for two meals. Please check whether your company offers matching donations.

This fundraiser will be open until December 31st. Link for online donations: [impact.shfb.org/montaloma](https://impact.shfb.org/montaloma)

## Holiday Scavenger Hunt

The Monta Loma Scavenger Hunt is designed for the neighborhood kids to have something fun to do during the holidays. Help to make this event fun for our kids by signing up as a Display Host. The Display Hosts (not the kids) need to sign up by December 8th and do the following:

1. Fill out this form: <https://forms.gle/waCQb3Y9HpPJ947b9>
2. Place a stuffed animal with some festive attire somewhere visible from the street. Make sure the toy is secured. Feel free to get creative with the attire and setting.
3. The stuffed animal should be displayed between December 10th and 25th.

Karla Valente will publish, via the Monta Loma email list, the list of participating streets by December 9th.

Kids will try to find everything by walking through the neighborhood, write down the street names and the number of stuffed animals they spot. Kids should NOT take the animals nor enter the private properties. The stuffed animals are visible from the street. Parents then send the answers to [klvalente@yahoo.com](mailto:klvalente@yahoo.com) with the subject (Holiday Scavenger Hunt Results) by December 30th. Please name your favorite display in your answer (street name and animal description). The first 20 kids to submit the responses to Karla Valente will get a little gift from the City of MV.

## Ernie's Trains Will Run Again

John Bianco, Ernie's son, will continue the tradition of running his model trains from Thanksgiving through Christmas Eve. Weather permitting, five tracks will run trains every evening except Mondays at 2387 Adele from 6:30 to about 9:00. The engines and cars change daily. Visit [montaloma.org](http://montaloma.org) for links to past articles and photos in the Mountain View Voice.

As many as 100 visitors a night—up to 300 on Christmas eve—come, including children brought by parents who themselves watched the trains when they were young.

**NOTE:** The MLN Holiday Progressive Dinner continues to be on hiatus due to COVID concerns by the hosts. We hope to bring it back for 2022.





## Monta Loma Garden Club is Blooming Again

By Karla Valente

Monta Loma's gardening enthusiasts resumed in-person meetings held outdoors. The club meets every third Saturday of the month from 10:00 am to 11:30 am. The meeting location varies each month, visiting another member's garden. Details are sent to garden club members via email before the meeting. Each month has a theme and covers monthly and seasonal garden tips. All gardeners are welcome, from first-time veggie growers to experienced native plant experts.

Email Karla Valente (klvalente@yahoo.com) for more information or to be added to the group email list. The Garden club thanks Hien Do for designing their club website: [montaloma.org/monta-loma/monta-loma-clubs/garden-club/](http://montaloma.org/monta-loma/monta-loma-clubs/garden-club/)

### Neighbors Helping Neighbors

This is a new ML Garden Club initiative lead by Jackie Chang (juicecandy@gmail.com). The organizers are looking for neighbors who are unable to maintain the front yard garden and could use some help with cleaning and basic landscape. Contact Jackie if you would like to take part in this opportunity.



## Monta Loma School News: From the Principal

By Trisha Lee, Principal, Monta Loma Elementary School

Happy Fall, Monta Loma Neighbors! Monta Loma Elementary School participated in the Great ShakeOut Earthquake Drill which takes place annually across California, the United States and globally on the third Thursday of October. Parents were also encouraged to continue the conversation on how to stay safe at home when an earthquake occurs.

At Monta Loma, we are gearing up for the end of the trimester with a minimum day on November 5th as well as a non-school day on November 11th when we will be observe Veterans Day.

We thank the community for utilizing the path through our field while classes are in session, allowing our staff to fully focus on our students and their learning. Soon, the City of Mountain View will be connecting the pathway behind our playground from the Anna gate to the path that continues behind third base so that community members don't need to walk through the dirt.

Please look for regular "Sharing Monta Loma" postcard updates to the community in your mailbox. The most recent update on the onboarding of an architect to maximize school/community use of Monta Loma Elementary green space is at: [tinyurl.com/MLSchoolUpdateSept21](https://tinyurl.com/MLSchoolUpdateSept21). Look for another update to come soon.

Wishing you all a festive fall!



### Neighborhood Resources

#### Community Emergency Response Team (CERT)

Tim Slattery, (650) 964-6389  
[CERT@montaloma.org](mailto:CERT@montaloma.org)

#### Neighborhood Watch Coordinator

Tom Purcell, (650) 224-5110  
[MontaLomaNBC@gmail.com](mailto:MontaLomaNBC@gmail.com)

#### Traffic/Parking Liaison

John Canata, (650) 269-5646  
[traffici liaison@montaloma.org](mailto:traffici liaison@montaloma.org)

#### Stay Connected with MLN

To subscribe to the email list, sign up at <https://montaloma-post.org>  
Contact moderator:  
[moderator@montaloma-post.org](mailto:moderator@montaloma-post.org)  
Or find Monta Loma on NextDoor

#### MLNA Websites

[www.montaloma.org](http://www.montaloma.org)  
Referrals: [localwiki.org/montaloma](http://localwiki.org/montaloma)  
Webmaster: Viêt Hoà Dinh  
[webmaster@montaloma.org](mailto:webmaster@montaloma.org)



Thanks to those who delivered the last newsletter:

Susan Jee, Silke Gurlich,  
Dave Erskine, Jennifer Dellern,  
John Thomas, Anne Muhe,  
Raymond White, John Canata,  
Maria Harnoto, Joan Macdonald,  
Paul Kostka, Ivy Lu, Dave  
McCleary, Chuck & Cookie  
Henderson, Herb & Victoria Perry,  
Martha Elderon, Birgit Grundler,  
Andy Coe, Leane Reelfs

We welcome more volunteers, even those who can help only occasionally. It's a good way to get to know your neighborhood and get an hour's exercise. Contact Linda Powers at [lindapowers.007@gmail.com](mailto:lindapowers.007@gmail.com) to learn more.

## Stocking Stuffers for Your Neighbors

Get ready for the holidays in Monta Loma style by drinking hot chocolate from a Monta Loma mug, or pick up a hat as a great gift for your neighbor. See the Monta Loma swag at [montaloma.org/mln-logo-items](http://montaloma.org/mln-logo-items) and contact Tricia at [president@montaloma.org](mailto:president@montaloma.org) to buy. If a t-shirt is on your wish list, visit out the offerings at [montaloma.org/shirts](http://montaloma.org/shirts), or contact Marilyn at [marilyn@gildea.com](mailto:marilyn@gildea.com) or 650-940-1606 to buy.



## Traffic & Parking Resources

By John Canata, MLNA Traffic and Parking Liaison

A few contacts for your reference:

- Non emergency MUPD phone number: (650) 903-6395
- Abandoned vehicle (more than 3 days): call (650) 903-6358
- Traffic Hotline / Police enforcement at a specific intersection: (650) 903-6146
- Burned-out street lights: (650) 903-6514
- Other traffic concerns or concerns about Google X Rails: email [trafficliaison@montaloma.org](mailto:trafficliaison@montaloma.org) and John will forward concerns to the correct contact.

## Communication in a Disaster: How Can I Tell My Family I'm OK?

By Tim Slattery, CERT Leader

One of the questions I am asked as a CERT member is, "After an earthquake, how can I let my family know I'm OK?" With all the communications possibilities we have now, you might think it would be easy. Unfortunately it isn't. There is a good chance that most of our normal ways of contacting friends and family will not work, or will work at a severely reduced capacity, after an earthquake or other major disaster.

Over the next few newsletters, I will discuss commonly available communication methods, how likely they are to work, and how to maximize the chance of using it to make contact.

### Communication in a Disaster Part 1

POTS or Plain Old Telephone Service is what many of us grew up with. In the places it survives, it was essentially unchanged from the early 1900's to the present day. A pair of copper wires connected the telephone in your house to the central office of the phone company. Power for the phone was supplied over those wires by the phone company. That power was backed up by a battery bank and generators. Even if your local power went out, the phone would still work.

Crowding, after a disaster, is a problem. The central office can only handle so many calls at once. If too many people are trying to call one another, the system can't handle all the traffic. This is exacerbated if most of those calls are local, using up all the circuits of that central office.

We used to be advised to prearrange an out of state contact to call after a disaster. A long-distance call goes into the central office, but instead of going out over one of the limited local circuits, it goes out to a long-distance line connected to the next level up switch. This takes the second leg of the call outside the disaster zone, where there should be less crowding of the circuits, so you are much more likely to get through.

As for wireless handsets, with a base that plugs in to the telephone lines, only some have functioning backup batteries to run the phone if power is out. To be able to use a POTS line when there is no grid power, it would be best to have an old phone that plugs directly in to the phone line.

Phone companies have been replacing the POTS lines with fiber optic lines. What looks like a POTS line phone, with copper wires coming down from the pole, only goes as far as the "concentrator", where it is converted to a digital signal on fiber optic lines. Power at the concentrator, which supplies our phone, is from the local power grid. So, if local power goes down, so does the phone.

Will a land line using POTS work to let you tell your family you are safe? Maybe. It depends on what kind of connection you really have to the phone company, and if you have a telephone that will work when there is no grid power.

What about cell phones? See Part 2 in the next newsletter.

If this sounds interesting, consider joining CERT. Contact Tim Slattery at [CERT@montaloma.org](mailto:CERT@montaloma.org).



## MIDDLE & HIGH SCHOOL MOUNTAIN VIEW CAMPUS

LEARN MORE & ENROLL:  
[WALDORFPENINSULA.ORG](http://WALDORFPENINSULA.ORG)







## Time to Sign Up— The Monta Loma Email List is Moving

By Apollinaris Schoell and Debbie Cunningham

In order to better manage the increased usage of the independent MLN email list, the list owners will move it to a more robust system.

If you are a current list member, you will be getting notification that the current list (hosted at [lists.montaloma.org](http://lists.montaloma.org)) will be shutting down as of Saturday, November 13, and you will be asked to sign up fresh at [MontaLoma-post.org](http://MontaLoma-post.org). In alignment with updated protocols on privacy, the list owners will not be automatically re-subscribing anyone, rather asking that anyone interested review the guidelines and sign up at [MontaLoma-post.org](http://MontaLoma-post.org).

This list will continue to be a volunteer operated and maintained local to Monta Loma list, and with the new host, the list now will have more automation and standards to streamline the operations on the back end. The functionality will remain virtually the same, with only a few changes; digest mode will no longer be supported and moderation will be automated with options for manual override, vs. the very manual task that it is currently. Neighborhood updates from the MLNA Board will continue to be made on this list as well as being posted on NextDoor.

The list owners look forward to continuing the long tradition of free stuff, fruit and vegetable swaps, and neighbors sharing answers to our most challenging local questions. For more information please visit [MontaLoma-post.org](http://MontaLoma-post.org) and follow the announcements on the current email list. Please check your spam/junk folder to make sure not to miss them.

## Continue the Newsletter Tradition

Many of you have expressed how much you enjoy our quarterly newsletter. How about being part of making it? Heather Schoell, the current editor and designer, is looking for a volunteer (or volunteers) who would like to work on this with her, ultimately transitioning to take over by next summer when her elected position ends.

The role has support from the board and other contributing writers and Heather is happy to continue with some content curation and writing. The new role would take over page layout and management of article submissions.

Skills needed are using Adobe InDesign (or another other page layout program), good command of the English language and its grammatical quirks (although there is proofreading support), and a love of creating engaging content for our amazing neighborhood of Monta Loma. Access to the InDesign app can be discussed with the board if you don't currently have a paid subscription.

Heather is happy to connect with anyone interested: email [newsletter@montaloma.org](mailto:newsletter@montaloma.org) to arrange a time to chat.

Neighbor Leslie Farrell re-purposes beautifully designed department store shopping bags as holiday decor in her home. Her collection spans 20 years of this tradition.



## Prevent Holiday Thefts

By Tom Purcell, Monta Loma Neighborhood Watch Captain

With the holidays approaching, we can expect a spike in package thefts. Take steps to avoid having deliveries loiter unattended on your doorstep. Many package deliveries offer detailed tracking information and delivery preference options so that you can make sure you or a trusted neighbor can secure a package soon after it's delivered.

For a tip sheet on preventing package theft as well as other helpful safety tips, visit the [Neighborhood Watch page](#) on [montaloma.org](http://montaloma.org).

Take care to avoid leaving signs that you're not home, such as empty trash bins at the curb. If you leave before your bins are emptied, ask a neighbor to roll them off the street. If you have home security cameras, include in the coverage area where you expect packages to be left.

Thefts from vehicles continue, so avoid leaving valuables in yours, and always lock it. The police urge you to call whenever you see anything that seems suspicious. For emergencies and in-progress incidents, call 911. For other matters, suspicious circumstances, or crimes that have already occurred, call the non-emergency number (650) 903-6395.



**Hobbledehoy**  
Montessori Preschool

Owner Operated  
since 1990

[www.hobbledehoy.org](http://www.hobbledehoy.org)

We offer FULL-TIME and PART-TIME programs for children  
ages 2-5 years old.

**(650) 968-1155**

2321 Jane Lane ★ Mountain View

## Keeping Monta Loma Clean and Green

### Fall Leaf Cleanup and Street Sweeping

- Prevent storm-drain clogs and street flooding by putting leaves in the compost cart or composting them; don't leave them in the street. Go an extra step and keep the storm drain nearest you free of leaves.
- Help the sweeper clean your gutter by moving your vehicles and trash bins off the street the evening before the second and fourth Thursdays of each month. Cars should be moved by 6:00 a.m.
- The next street sweeping dates are: 11/11, 12/9, 12/23, 1/13, and 1/27. Details are at [tinyurl.com/swpng](http://tinyurl.com/swpng).
- If you have tenants who park on the street, please keep them informed of dates as well.

### Walkable Sidewalks:

- Keep sidewalks clear of debris, especially after rain, for the safety of pedestrians.
- Please trim shrubs back to the full width of the sidewalk and to a height of seven feet, as recommended by the city.

**Holiday Recycling:** Holiday trees will be picked up through the third week of January. See [mountainview.gov/holidays](http://mountainview.gov/holidays) for info on recycling holiday trees, lights, and extra trash.

**Hide those bins:** Remove carts from the street the evening after garbage collection or no later than the next day. Store the carts inside the garage or screened from street view as a courtesy to your neighbors. If these areas are unavailable, place the carts on the side of the garage or house.

### Dogs:

- In addition to always picking up your dog's droppings from others' yards, always pick up dog messes deposited at the Monta Loma Park fields. Dogs are not allowed on fields when school is in session, including during summer.
- Please don't deposit doggie bags in neighbors' trash cans after they've been emptied.
- Incontinent dogs should be walked in the gutter, not on sidewalks.

## Neighbors' Websites Page Updates

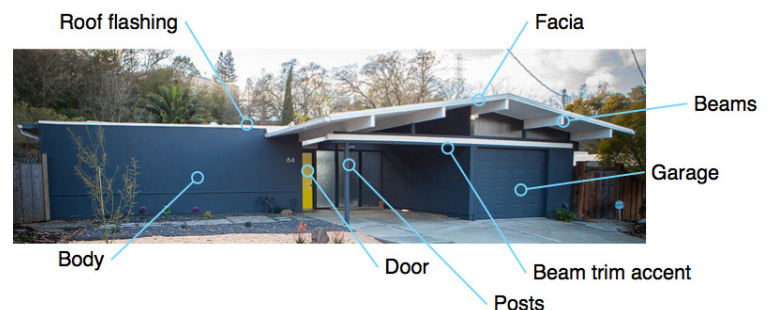
There are some new entries on the Neighbors' Websites page at [montaloma.org](http://montaloma.org) under MLNA. If you are a Monta Loma resident who owns a business and would like to be listed, send your name, business name/description, and the link to your site to [marilyn@gildea.com](mailto:marilyn@gildea.com). If your link is no longer valid or has changed, or you know that someone listed no longer lives in the neighborhood, please let Marilyn know so she can update the page.

## Plan Ahead for House Painting

By Heather Schoell

Given how hard it is to secure contractors to help you update your home right now, it's never too early to start planning. Painting a house can be a quick way to make a home feel refreshed and updated, changing the character from dated to modern. A new coat of paint is also important to protect the wood and seal it from the weather and insects. Experts say that the best time of year to paint a house is when the weather is dry and the temperatures don't fluctuate too far, making late spring a good time here in Mountain View.

Choosing paint colors can be a challenge in itself. Sometimes a favorite color isn't exactly the best color for a house, but the modern home styles of Monta Loma do invite opportunity to add a pop of fun. A front door or the beam trim over the garage are great areas to let personality shine through. Typically a modern home has 4 colors: a field color (covers the majority of the home), a trim color (around the doors, windows), a beam color (color that passes through the house from indoors to out), and an accent color (front door, garage beam.)



When picking a color palette, start with a preference for warm or cool tones. Warm tones have a touch of red or orange to them, while cool tones tend towards blue. Black or grey can be warm or cool, whereas brown or beige is almost exclusively warm. The trim color and the beam color should complement this tone. The accent color doesn't need to match the tone, and in some cases, being a contrast helps add an extra punch. Joseph Eichler's original field color was actually a stain, not a paint, giving the siding an extra richness of texture. He also often had the beams painted in contrast to the ceiling so that the line stretched through the glass. His bold accent colors stand up to the test of time.

Even though winter is not the best weather to start a painting project, it is a good idea to buy samples and paint swatches and live with them a bit before deciding on a color. Look at them in different lights and on different walls before making your final decision.

*Image credit and article inspiration from John Shum, Destination Eichler [www.destinationeichler.com/blog/eichler-painting-tips](http://www.destinationeichler.com/blog/eichler-painting-tips)*

## The Time for Tree Trimming is Now

By Dotty Calabrese

Now—September through December—is the BEST time to trim your trees and shrubs, both for the health of the trees/shrubs and for the birds and mammals that inhabit them for raising their young. Late December and early January are the best time to trim many fruit trees. By mid-January, many of our local birds are choosing potential nest sites, and beginning to court potential mates. Courting, nesting, and raising young go on through most of August. Only emergency tree work should be done during Mid-January through August. If your trees and/or shrubs need work, schedule it now or ASAP.



## Lead a Cool Block with Your Neighbors

The City of Mountain View's **Cool Block Program** is a way for small groups of neighbors to meet & work together on initiatives (carbon reduction, disaster resiliency, water stewardship, livability, empowerment). There will be three team leader trainings in Nov & Dec. Then team leaders will ask nearest 5 to 8 neighbors if they want to join. A series of 9 themed meetings start in January. Contact Jennifer Dell-Ernstrom: [jdellern@gmail.com](mailto:jdellern@gmail.com) to team up with her in Monta Loma, and sign up for the training session here: [tinyurl.com/CBTrainNov](https://tinyurl.com/CBTrainNov)

## HELMING'S AUTO REPAIR

Complete Car Care and Maintenance  
*Serving the Community Since 1976!*

- Owned by a Monta Loma Family
- All Makes and Models
- Convenient 24-hour Drop-Off
- Certified Bay Area Green Business
- Expert Diagnosis Using State-of-the-Art Equipment
- Superior Service You Can Trust
- A Certified Smog Check Facility



We are taking every precaution to keep our customers and staff safe from COVID-19.



**Helming's Auto Repair**  
2520-G Wyandotte Street  
Mountain View, CA 94043  
[www.helmings.com](http://www.helmings.com)  
**650-988-0460**



Successfully serving  
Monta Loma for  
more than 20 years



*How can I help you?*

**Nancy Adele Stuhr**

Mountain View Neighborhood Specialist

**650.575.8300**

[nstuhr@sereno.com](mailto:nstuhr@sereno.com)  
[www.nancystuhr.com](http://www.nancystuhr.com)  
CalDRE# 00963170

**sereno—**

sereno—  
**1% For Good**  
CHARITABLE FOUNDATION





# NEIGHBORHOOD FOODIES

## New Owners of Nearby Grocery Store Offer Fresh Produce and International Specialties

By Heather Schoell

Crossroads market on San Antonio Rd. across from Summer Winds has been one of many grocery options in the area for years, offering international items not available elsewhere. It had seemed to be fading out during 2020 until about four months ago when Nazokat Rajabova and her partner purchased the business and have been bringing it back to life.

Rajabova arrived in the US from Uzbekistan in 2010 after winning the green card lottery, and at first her husband ran a car dealership here. To balance the decline of that business, Rajabova decided the time was right to diversify into the grocery business, and after looking for a year, she found Crossroads.

She and her family live in Campbell, and together they have been working hard, fixing up the store, roping in her teenagers to help when she can. They have been adding products like fresh produce and unique French, German, Italian, and Eastern European specialties. They are known to have the best authentic Hungarian salami, as well as some special Georgian and Hungarian wines.

Soon they plan to offer sandwiches and salads, serving the lunch crowd and those staying in the new hotels next door. For those who knew the store for their olives and feta, Rajabova is working to get that stocked again soon.

The holidays will be a great time to check out the store, especially for the German and Hungarian sweets. And keep an eye on what they're building, as there are all sorts of new and exciting ideas brewing as they see traffic pick up and word gets out about their new store.



Nazokat Rajabova, New owner at Crossroads Specialty Foods



credit: Heather Schoell




**Community School of Music & Arts has Reopened — With More Space to Serve You!**

CSMA, one of the country's largest nonprofit schools of the arts, is right in your backyard!

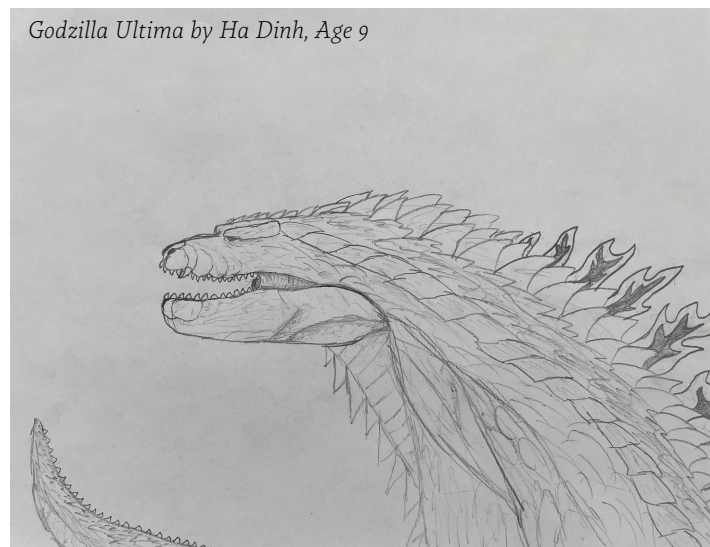
Come enjoy music and art classes, lessons and camps plus free concerts and gallery shows.




community school of music and arts

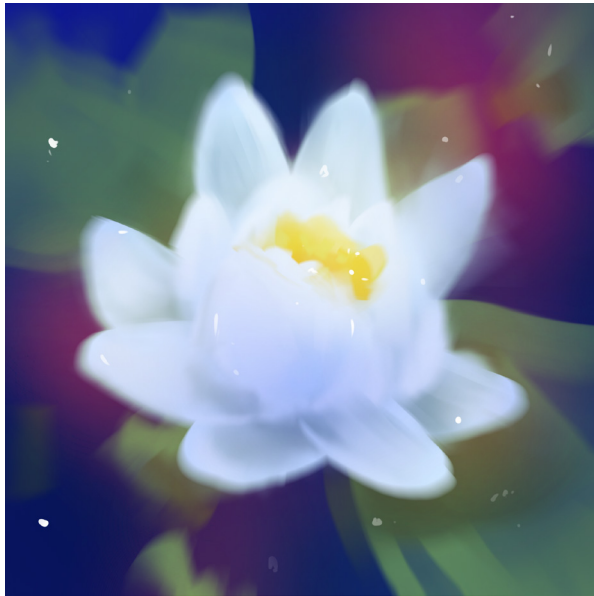
230 SAN ANTONIO CIR., MOUNTAIN VIEW, CA • ARTS4ALL.ORG

Godzilla Ultima by Ha Dinh, Age 9





# MONTA LOMA FUN & GAMES

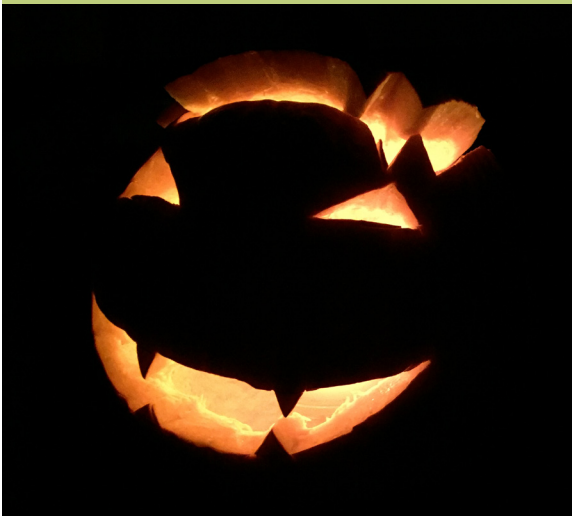


Alina, Age 14



Serena, Age 8

Why did the cat brush his teeth?



*So he wouldn't get cat-vities!*

*Joke by Bella, Age 5  
Photo by Baidra Murphy*

**Kids of all ages!**

Submit your art, jokes, or games  
to [newsletter@montaloma.org](mailto:newsletter@montaloma.org)

## Holiday Neighborhood Bingo

Use the bingo card as you walk around the neighborhood, and e-mail five of the best photos\* to [newsletter@montaloma.org](mailto:newsletter@montaloma.org).

*\*By sharing your photos with us, you are allowing us to post on social media, the MLN website, and in the newsletter.*

Inflatable Penguin	House with icicle lights	Orange tree full of fruit	Holiday book in a little library	Living wreath
Stuffed animal in a window	Menorah	Ernie's Trains	Snow or Hail	Reindeer antlers on a car
Santa	Food donation station	<b>FREE</b>	Christmas Tree	Holiday Chalk Art
Lanterns on Adele	Turkey	Silliest Holiday Decor	Nativity Scene	Full Moon
Red Flowers	Candles in the Window	Sleigh bells	Pet with a holiday outfit	Hot Cocoa

## Neighbors Interviewing Neighbors: A New Opportunity to Share Your Story

By Heather Schoell, MLN Newsletter Editor

We wave to each other on our walks with the dog, or we watch the garden bloom at the house on the corner, but it's hard to get to know the people behind these regular encounters. Now is your chance to meet the people who make this neighborhood unique. I'll be taking volunteers who would like to be paired up for a mutual interview and are willing

to write it up for a future newsletter.

In this edition, two women, both interested in sharing the work they do with their neighbors, sat down for coffee at Starbucks and had a chat about caring for the young and the old and how important Monta Loma has been in their lives. Email [newsletter@montaloma.org](mailto:newsletter@montaloma.org) to participate.

## The Time is Right to Get To Know Michelle Forrest

By Elna Tynes

Michelle Forrest, her husband Eric Allison, and their daughter Bella, 6, moved into Monta Loma six years ago and have come to love the community, its diversity, and the families they've met. Michelle has practiced family law since 2012 and has a particular interest in child development; Eric is in aerospace (currently works at Joby Aviation). They are expecting a baby boy in November. They live at the corner of Victory and Alvin in an Eichler and are looking for ways to update the 1950s layout. Born and raised on the Stanford Campus, she and her husband went to (and met at) Stanford, and she went to Santa Clara Law School.

Her current passion is her newly published book "At The Right Time," which depicts cute animal characters using prosocial language to more easily navigate social settings, such as by sharing toys and taking turns. The book arose out of her experiences as a teacher at Stanford University's Bing Nursery School from 2003-2008. Michelle's hope is that children who read the book will become empowered by adopting and mastering the behaviors modeled in the book. (Anyone interested in purchasing the book may contact Michelle at [ittybugpress@gmail.com](mailto:ittybugpress@gmail.com).)

Michelle and her family enjoy being outdoors, and exploring Mountain View and the Bay Area, especially the local beaches on the coast like Montara Beach south of Pacifica. In her spare time Michelle likes to play tennis, run, hike, swim, play the violin, learn to cook, and make children's costumes from materials found in the home. She and her husband have thoroughly enjoyed getting to know neighbors at the Alvin block parties and would enjoy having block parties with Victory neighbors, as well. In the near future, "at the right time," Michelle is hoping to host story times in her yard to meet other Monta Loma families with young children.



## Helping Seniors Keeps Elna Tynes Inspired

By Michelle Forrest

Elna has lived on Adele for 37 years. She lives with her two sons on a lot replete with lemon, peach, pear, cherry, and pineapple guava trees, as well as bountiful vegetable garden. Originally from Seattle, she came to the Bay Area to attend Stanford in 1957. She enjoys the rich culture and intellectual environment, as well as great climate; and she appreciates the diversity of Mountain View in particular.

Elna has long been active in the local community. She has served on the MLNA board and Mountain View's Senior Activities Committee. Next summer, you should find Elna—for the eighth year—volunteering at the welcome table for Monta Loma's Ice Cream Social.

Elna's current passion (after more than 30 years in tech) is to advocate for and serve seniors, especially those with Alzheimer's Disease. Elna founded Cognitas Health to educate and support those with the disease and their caretakers. Her business office is on Old Middlefield Road.

Elna's dedication to the geriatric community has led her to drive policy changes at the county level. Elna works with the Santa Clara County Senior Care Commission and Sourcewise Advisory Council, and is proposing over \$1 million dollars be used to ensure seniors without internet gain digital connectivity. Ensuring digital inclusion will allow this vulnerable population to, for example, more easily communicate with physicians and participate in telemedicine.

Over her lifetime, Elna has published 37 books and received multiple degrees, including a Masters in Gerontology and a Doctor of Health Administration (DHA) Degree, from numerous prestigious universities. When asked what she is most proud of, Elna says her two children.

Look for Elna on Adele on Christmas Eve, enjoying both Ernie's Trains and the candlelight trail – a glow that lengthens as more neighbors join in the holiday celebration.





## This Summer Brought Back Block Parties and the Monta Loma Ice Cream Social

The Ice Cream Social, held at Monta Loma Park on Sunday, September 5, was a huge success. With the exhibits widely spaced for Covid safety, the crowd spread all the way to Thompson Ave. The welcome-table volunteers had signed in almost 300 attendees, who enjoyed a selection of packaged ice cream treats while meeting their neighbors.

Neighborhood participants were CERT members (safety info), Gary Heyman (balloons), Bill Lambert (Friends of Mountain View Parks), Tom Purcell (Monta Loma history and bike-registration), Alan Whitaker (monarch butterfly and native milkweed info and plants), Gloria Jackson (cotton candy), Jill Rakestraw (plant exchange), Karla Valente (gardening information), and Victor Brilon's band, Nobody's Girlfriend. Marty Pulvers staffed the tee-shirt and logo-items sales tables, Jim Cochran took photos, and Bill Crans-ton provided the A-frame signs that reminded us to attend.

Other participants were MLE PTA, Mountain View Educational Foundation, Canopy, Recycling and Zero Waste, and a MV police officer and dog.

Mayor Ellen Kamei made extra effort to attend, and stayed for 90 minutes. MVWSD trustees Laura Berman and family and Ellen Wheeler also came. They all appreciated the opportunity to meet Monta Loma residents, and their appreciation was echoed by the neighbors.

Thanks to everyone who helped make this year's event such a huge success.



Packaged ice cream treats were a hit and easy to hand out. Milkweed was raffled off, and booths had good traffic at the 2021 Ice Cream Social.

credit: Jim Cochran

While not as many block parties were planned this year, a few streets still gathered outside to reconnect. Benjamin's Block Party in September was well attended by neighbors of all ages.



credit: David Bergen

## Selling Homes For Top Dollar In Mountain View Over 25 Years...

### HOW WE CAN HELP YOU....

With no obligation we have helped many Sellers in Monta Loma with the following:

#### NOT SELLING!

- Great up-to-date ideas for home improvements with minimal investment, as well as medium to large sized remodeling projects
- Access to our Rolodex of tradespeople
- Names of local lenders for re-fi and lines of credit

#### SELLING WITHIN 3 YEARS?

Unfortunately, most people improve their home just before they sell and never enjoy those upgrades...how sad!

- Call us for a walkthrough to share our proven market-preparation upgrades that provide the biggest bang for your buck / ROI when you are ready to sell
- Understand the true value of your home verses what the websites say which are traditionally inaccurate
- Access to our Rolodex of tradespeople for those improvements
- Considering selling in 2022...call us for a zero-obligation consultation. Our Plan-Of-Action will ultimately provide the highest possible price for your home



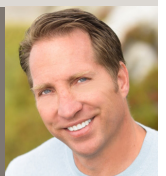
**SHELLY POTVIN**  
REALTOR®

650.303.7501  
shelly@sereno.com  
ShellyPotvin.com | DRE 01236885

sereno-

**MICHAEL SUTTON**  
REALTOR®

650.799.2253  
sutton@sereno.com  
DRE 01916467 | MichaelSuttonRealtor.com





**New Patients Welcome  
Friendly Exceptional Service**

**Shirley Irudayaraj DDS  
877 W Fremont Ave Suite L1  
Sunnyvale, CA 94087**

**Call 408 498 0244**

[www.dovedentalsmiles.com](http://www.dovedentalsmiles.com)



If you're thinking of selling, David is ready to help you with all of your real estate needs!

**DAVID TROYER**  
DAVID@DAVIDTROYER.COM  
650.440.5076  
DAVIDTROYER.COM  
LIC#01234450

**INTERO**  
A Broker/Realtor®

**BAIDRA MURPHY**, Managing Broker  
**PROUD MONTA LOMA RESIDENT**  
650.383.7201  
BAIDRA@DAVIDTROYER.COM  
LIC#01216142

*Pacific Ballet Academy*

PRESENTS  
OUR 30TH ANNIVERSARY OF

**THE NUTCRACKER**

November 26-28, 2021

at

*Mountain View Centre for Performing Arts*

**We welcome new students!**

**Take a Free Trial Class Register anytime**

**Enroll your dancer today and you will be glad you did!**

[pacificballet.org](http://pacificballet.org) [director@pacificballet.org](mailto:director@pacificballet.org) 650-969-4614  
295 Polaris Ave, Mountain View

*Serving Monta Loma for More than 40 Years!*



**Wishing you Happiness  
for the Holiday Season...**

*The Monta Loma Specialist*

Visit my blog at [www.Lmercerc.com](http://www.Lmercerc.com)  
for market updates and  
home improvement ideas.

**Lynne Mercer**

650.906.0162 • [Lmercerc@Compass.com](mailto:Lmercerc@Compass.com)

DRE# 00796211