



MONTA LOMA NEIGHBORHOOD NEWS

SAVE THE DATES FOR THESE ANNUAL EVENTS!



Saturday, May 4, 2024
Garage Sale

Sunday, August 25, 2024
Ice Cream Social



Brad Ostman & Andrea Thomas welcome new neighbors

Welcome team update

The Welcome Team met with many new folks at the Ice Cream Social and gave out about 15 Welcome Bags. Thanks to Brad and Shelly Ostman for taking care of this and being so welcoming to all who visited the Welcome Team Table. Special thanks go to Nirvana Nwokidu for her assistance.

The first Meet and Greet at Starbucks on September 23 was also successful. Thanks to Andrea Thomas and Brad Ostman for being such enthusiastic representatives of our neighborhood.

We have started the process to welcome new neighbors by giving them a welcome packet. We've also recruited volunteers to act as regional ambassadors to help us with this process, and welcome anyone who would like to become an ambassador. This is a great way to meet your neighbors. We also encourage you to notify us when new residents arrive. When you see a new neighbor moving in, please email their address to Welcome-Team@montaloma.org so we can welcome them.

Happy Holidays from the Welcome Team

Monta Loma Neighborhood Association 2023 Holiday Fundraiser

Every year, during the holidays, the Monta Loma Neighborhood Association raises funds for the Second Harvest Food Bank, now serving 500,000 people on average every month. Any amount is welcome, and your generosity is much appreciated. Your gift to Second Harvest helps provide hope and security to families across Silicon Valley who are still recovering from the financial devastation caused by the pandemic. Each dollar raised helps provide enough food for two meals. Please check whether your company offers matching donations. The fundraiser will be open until December 31st. You can donate securely at impact.shfb.org/team/538373.



SECOND HARVEST
of SILICON VALLEY



IN THIS EDITION:

Fencing vote for Monta Loma Elementary School	p. 2
New Little Free Library	p. 3
Birding: American Crows - Big Black Birds	p. 9
Open Studios: Makers and Artists	p. 11

President

Nirvana Nwokidu
president@montaloma.org

First Vice President

Olga Bright
vp2@montaloma.org

Second Vice President

Open position

Treasurer

Andre Valente
treasurer@montaloma.org

Secretary

Cheryl Smith
secretary@montaloma.org

Members-at-Large

Marilyn Gildea (communications)
Tricia DelGaudio
Jennifer Dell-Ernstrom
Anish Morakhia
Baidra Murphy
Alan Whitaker

MLNA Newsletter

Editor & Member-at-Large

Jennifer Dell-Ernstrom
newsletter@montaloma.org

Layout & Member-at-Large

Tricia DelGaudio
newsletter@montaloma.org

Advertising Manager

Baidra Murphy
ads@montaloma.org

Illustrations/Photos

If interested in contributing, please email the editor with content ideas. Submissions of relevant cartoons also welcome.

© 2023 by the Monta Loma Neighborhood Association. All rights, including electronic posting and distribution, reserved. Individual article rights revert to the authors, and permission must be obtained from them to re-use their articles in any way.

Neighborhood hosts 11 block parties in 2023

by Marilyn Gildea

The eleven block parties held this year kicked off with a Fourth-of-July brunch on Mardell, followed in mid-July by one on Benjamin that always includes the residents of Quincy and the 400 block of Emmons.

These were followed by the Jane Lane and Anna/Elka parties in August. The residents of the 2300 block of Laura; of Thaddeus, Richard, and the 500 block of Emmons; and the 2400 block of Alvin all partied in September.

October saw parties for residents of the 2500 block of Alvin, Thompson Square, Lida/Palmer/Adele (which included an olive-oil tasting hosted by Nicole and Can Babaoglu), and Hamilton.

Total attendance for the year was over 430. The organizers reported that both newcomers and long-timers appreciated the chance to get together, and everyone is looking forward to a repeat in 2024.



A warm thank-you to all the party organizers who do the planning, inviting, and shopping, as well as to CERT member John Thomas, who handles the loan and return of the safety cones and Road Closed signs.

Mountain View Whisman Board of Trustees vote on fencing at Monta Loma Elementary School

On September 7, the Mountain View Whisman Board of Trustees voted 4-1 to choose the "Option 1" fencing scenario, which leaves the largest portion of the campus open to the public while school is in session. The full campus, including the fenced off areas, will be open to the public outside of school hours.

Read the full *Mountain View Voice* article at tinyurl.com/mlnfence.



Monta Loma welcomes a new Little Free Library to the neighborhood

The new Little Free Library on Jane Lane near Thompson Avenue is a gift of Rebecca Chopra and Michelle Schaal, who intend it to be for children's to young-adult books and games. It was a group effort: Michelle's sister Tiffany Murray, who lives in Old Mountain View, painted it, including the portraits of pets Luna, Kermit, and Yeti; Rebecca assembled it; and Jeff Mills helped Michelle and Rebecca adapt the post and erect it in September.

See all the Little Free Libraries at montaloma.org/little-free-libraries.



Holiday tree recycling schedule

Holiday trees will be collected at no charge on your compost day from December 26 until the third Friday in January. If your tree was set out properly and not collected, please contact Recology Mountain View at 650-967-3034 or email ContactUsRMV@recology.com.



Set Out Instructions

Green and flocked trees with wood stands are accepted, but please no tinsel, decorations, or metal or plastic stands.



Small trees: please cut trees so they fit easily into the compost carts for collection by the regular truck.

Large trees: please cut into 5-foot pieces and place in the street gutter next to your driveway so they can be easily seen by drivers (and not missed because they were next to hedges or bushes). Large trees will be collected by a special rear-loading truck.

After the third Friday in January, residents may only recycle trees (cut up) in the compost cart; use a free On Call Plus appointment; or attach an extra garbage tag.

Check out the Old Mountain View Neighborhood Association (OMVNA) newsletter

The Old Mountain View Neighborhood Association's quarterly newsletter is a trove of information on local restaurants, history, art, coming events; safety tips from the police and fire departments (lithium-ion batteries in the August 2023 issue); and more.

Go to omvna.org and click **Lamppost Newsletter**.

Neighborhood Resources

Community Emergency Response Team (CERT)

Tim Slattery, 650-964-6389
CERT@montaloma.org

Neighborhood Watch Coordinator

Tom Purcell, 650-224-5110
MontaLomaNBC@gmail.com

Traffic/Parking Liaison

Alan Whitaker, 650-279-3375
traffici liaison@montaloma.org

Stay Connected with MLN

subscribe to the email list at
montaloma-post.org

Find Monta Loma on
NextDoor.com

MLNA Websites

montaloma.org
Referrals: localwiki.org/montaloma
Webmaster: Viêt Hoà Dinh
webmaster@montaloma.org



Thanks to those who delivered the August newsletter:

Cheryl Smith, Silke Gurlich, Jenna Lee, Donna Clarke, Ivy Lu, Linda Powers, Olga Bright, Dave Erskine, John Canata, Maria Harnoto, Diane McCleary, Leane Reelfs, Paul Kostka, Maria Nelson, Dave McCleary, Chuck & Cookie Henderson, Griffen Auckland, Herb & Victoria Perry, Martha Elderon, Grant & Birgit Grundler, Andy Coe, Jennifer Dell-Ernstrom, Nirvana Nwokidu

Do you have an hour to spare? We welcome new volunteers, even if you can help only occasionally. It's a great way to get to know your neighborhood and get an hour's exercise.

Contact Linda Powers at
lindapowers.007@gmail.com

Ice Cream Social — BIGGER and better than ever

By Marilyn Gildea

Our annual Ice Cream Social, held at Monta Loma Park on Sunday, August 27, was an amazing success, with attendance estimated to be 440, almost 100 more than last year.

The biggest draw may have been the Mountain View Whisman School District's display of the options for fencing Monta Loma Park, with Superintendent Ayindé Rudolph and Chief Financial Officer Rebecca Westover present to answer questions.

City staff members brought several tables to inform us about the new Multicultural Engagement Program, the Parks Strategic Plan, and the Sustainability Initiative. A representative of Recology Zero Waste offered kitchen-counter food-waste pails and answered recycling queries.

The Monta Loma Newcomer Welcome Team made its debut, with Shelly & Brad Ostman staffing a table to offer information (and birdhouses made by Brad) to new residents.

Other first-time displays were brought by Leadership Mountain View, Crittenden Middle School PTA, and the Community Action Team (CAT), which offered free Covid test kits. Neighbors Marilyn Nourse offered information about Girl Scouts, and Elaine Lou brought MLN-grown organic apple samples and a refractometer to test their brix level.

Making repeat appearances were the MLE PTA, Canopy, Living Classroom, and the Mountain View Historical Association. Two MV Police officers came, one with a friendly police dog. A crew from the Fire Department brought an engine and created a rainbow by shooting a hose over the field.

Neighborhood participants included our CERT members (safety information), Gary Heyman (balloons), Tom Purcell (Monta Loma history), Alan Whitaker (Monarch and Pipevine Swallowtail butterfly info, Pipevine chrysalises, and the plants they require), and Joan MacDonald (CHAC).

Wouter Suverkrupp gave rides to kids in a buggy drawn by robot horses, and Gloria Jackson and John Ari Stepp offered cotton candy. Jim Cochran took photos, and Bill Cranston provided the A-frame signs that reminded us to attend.

Invited attendees who were able to attend included Mayor Alison Hicks and councilmembers Ellen Kamei, Lisa Matichak, Emily Ann Ramos, and Lucas Ramirez, plus City Manager Kimbra McCarthy, who lives in Monta Loma. MVWSD trustees Bill Lambert, Laura Berman, Chris Chiang, and Devon Conley also came. They all appreciated the opportunity to meet Monta Loma residents, and their appreciation was echoed by the neighbors.

Photos are at montaloma.org/photos-of-2023-ice-cream-social.



Let's talk tires!

By Leane Reelfs, The Car Gal at Helming's Auto Repair

I'm sure many of you have heard the saying, "Insert a penny headfirst in your tire's tread and if you can see all of Lincoln's head, it's time to replace your tires." However, just because you have a lot of tread on your tires does not necessarily mean they are in great shape. We have seen tires with a lot of tread on them, but they have considerable age cracks. Age cracking happens due to time and exposure to UV rays and the rubber begins to degrade. Age cracks can get deeper as you are driving and eventually the tire can separate.



Many tires have a life of around 50,000 miles, but that really varies depending on your driving. Those drivers who zip over to Santa Cruz or Tahoe...or just take the off-ramp corners fast...tend to get edge wear and you use more tread on those windy roads. If your tire pressure is low, that affects tire wear and gas mileage, so consider checking your tire pressure every couple of months.

Tires these days have tire pressure monitoring systems (TPMS) and you are alerted when your tires are low. The TPMS light will also come on when the battery inside them dies. It's a small disc battery inside the tire, connected to the valve stem. If your tires are set to pressure and the light is still on, you probably need to replace one or more sensors.

Rainy weather is coming, so make sure your tires are ready for it.

Biome – a new board game

Biome, one of the first board games to be born in the MLN, will launch on Kickstarter in January.

Leonie Grundler is the designer, and had her very first play test of the game in November 2022 with neighbors Liz and Peter on Hamilton Ave.



In Biome, players are environmentalists, competing to build the most biodiverse biome and successfully raise baby birds and rabbits.



Players collect food and sunlight, compete for achievements, and protect their baby animals from other players' predators in this game for two to four players. Featuring stunning art, wooden components, and lots of variability, this family-friendly game is sure to bring lots

of joy to both nature and game lovers. Five percent of profits from sales will be donated to organizations fighting to protect biodiversity and vulnerable species.

You can support Leonie and be the first to get Biome by going to play.biomethegame.com (scan the QR code), or reach out to leonie@lionessgames.com if you'd like to test the game.

Monta Loma School News: From the PTA

By Tanya Ngo, President

The PTA hosted the Fall Festival on October 27th where kids enjoyed carnival games, won prizes, and ate delicious goodies. As a 100% volunteer-driven event, we couldn't have done it without the support from so many parts of the community: school staff, student volunteers, donations from Safeway and Los Altos Taqueria, and especially parents who volunteered, made donations, baked treats, and took the time to attend the festival. It was wonderful to see everyone come together to make the event happen.

We are currently holding our annual food drive benefiting LiveMoves & Hope's Corner. If you would like to contribute, please drop off items in the circular bins outside of the multi-use room in front of the school by November 17.

Thank you for supporting Monta Loma Elementary!

To learn more about the PTA, visit our website, montalomapta.org.



Monta Loma new parents' group



There is a baby boom in Monta Loma! Come network with other new parents on Saturday mornings at Monta Loma Park at 11 am by the picnic tables. Learn more by contacting Ella Gille ella.gille14@gmail.com or join the Facebook group for "Monta Loma New Parents".

Join our Monta Loma Neighborhood email list!

The Monta Loma Neighborhood email list has been a major part of our close-knit community for over 20 years, and we encourage you to join if you haven't already. Information is at montaloma-post.org.



Handling Gas Emergencies

By John Partlan, CERT member

A recent natural gas leak near W. Middlefield Rd. serves as a reminder to call DigAlert at 811 before starting any digging project. PG&E will come out and mark your gas lines.



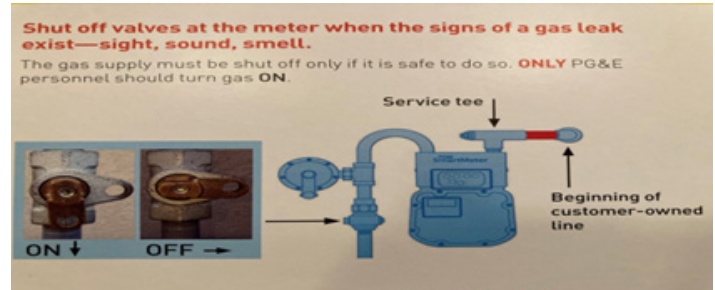
But how do you recognize a gas leak? And what do you do next? Here, courtesy of our Monta Loma Community Emergency Response Team (CERT) montaloma.org/mlna/cert, are some tips taken from Handling Gas and Electric Emergencies, *A Reference Guide for Community Members* by PG&E.

Gas leaks smell and make noise. Mercaptan added to natural gas smells like sulfur or rotten eggs. Gas line leaks can be very loud (jet engine), while leaks from appliances give off a hissing sound. Other signs are flames coming from the ground or bubbling in puddles. The presence of construction/excavation equipment can also be a red flag.

Fires and explosions from leaking gas can be ignited by commonplace things such as motor vehicles, power tools, radios, and phones. Even doorbells, light switches, flashlights, motion detectors, and garage door openers can start trouble. Shoes rubbing on a doormat can cause static electricity. When responding to a gas leak, **do not** step on the doormat and **do not** ring the doorbell. Instead, knock on the door frame.

So, what should you do if you suspect a natural gas leak? First confirm that PG&E has been contacted (1-800-743-5002) with the location such as a house number or street intersection.

If the gas leak is **inside** a house, turn the shut off valve at the appliance **if it is safe to do so**. Otherwise, turn off the gas at the meter. If available, use the proper gas shut-off tool. The valve on the pipe should be horizontal.



Do not enter a house with a gas leak.

If a gas leak is **outside** a house, **do not** touch the gas meter. Secure the area and keep the public away. If necessary, evacuate the public to a safe distance, approximately 330 feet away.

Lastly, **do not** try to extinguish an outdoor gas fire, let it burn. Extinguished gas is invisible and may migrate near an ignition source.

We will address handling electric power line emergencies in a future issue.

Stay safe.

**NOTARY
PUBLIC**
And **REALTOR**

Contact Me:
650-435-2349
nirvana.nwokidu@gmail.com

kW BAY AREA
ESTATES
KELLERWILLIAMS.
DRE# 02142853

A Proud Monta Loma Resident
NIRVANA NWOKIDU

Ernie's trains will run again

John Bianco, Ernie's son, will continue the tradition of running his model trains from Thanksgiving through Christmas Eve. Weather permitting, five tracks will run trains every evening except Mondays at 2387 Adele from 6:30 to about 9:00. The engines and cars change daily. Visit montaloma.org for links to past articles and photos in the *Mountain View Voice*.

As many as 100 visitors a night — up to 300 on Christmas eve — come, including children brought by parents who themselves watched the trains when they were young.



Photo by Michelle Le

Ernie also began the Christmas Eve tradition of curbside luminaria (candles in paper bags). Over the years, neighbors have added their own, so a row of the softly glowing lights now lines Adele and stretches around the corner onto Palmer, making the block a must-see on Christmas Eve.

HELMING'S AUTO REPAIR

Complete Car Care and Maintenance
Serving the Community Since 1976!

- Owned by a Monta Loma Family
- Most Makes and Models
- Convenient 24-hour Drop-Off/Pick Up
- Certified Bay Area Green Business
- Superior Service You Can Trust
- A Certified Smog Check Facility

*We do buyer's inspections when
you buy a used car!*



Always a great job --
I can trust Helming's'
crew to make recom-
mendations to keep
me safe." - Judy S.



Helming's Auto Repair
2520-G Wyandotte Street
Mountain View, CA 94043
www.helmings.com
650-988-0460



Successfully serving Monta Loma for more than 20 years

How can I help you?



Nancy Adele Stuhr

Mountain View Neighborhood Specialist

650.575.8300

nstuhr@sereno.com
www.nancystuhr.com
CalDRE# 00963170

CHRISTIE'S
INTERNATIONAL REAL ESTATE
SERENO

sereno
1% For Good
CHARITABLE FOUNDATION

AROUND THE BLOCK

Makers of Monta Loma meet for a show and tell

By Jeff Kaiser

On September 9, I hosted an open-invitation meeting for those in Monta Loma who consider themselves “mak-ers” to meet with others with similar inclinations. About a dozen people attended, with a wide range of creative interests, from making an elegant front gate for their home, building cars, 3-D printing, and metalworking to artistic mobiles, baskets, sundials, robots, and stereoscopic viewers. Anyone who makes something of any kind would fit in.



We shared our enthusiasms with one another, and picked one another’s brains for what we can do, and how to do

things. We resolved to meet again in about six months to report on our projects and attract more contributors.

Check out these images which show some of the items that folks brought as examples of their work. We had a good time and noshed on the snacks some brought.



Tim Slattery shows CERT team how to use the generator



CERT members meet on second Saturdays at Monta Loma Elementary School

Annual Financial Report

By Andre Valente, MLNA Treasurer

We’ve had a very successful year, supporting the Ice Cream Social, which is our signature event, and eleven neighborhood block parties. I have met many neighbors at these activities, which help make this neighborhood such a wonderful place to live.

This is a condensed financial statement for the 2022-2023 fiscal year, audited by the Board. Feel free to contact me, treasurer@montaloma.org, if you need more details. Please patronize our newsletter advertisers; they provide significant financial support to the association.

MLNA	Withdrawals	Deposits
Beginning balance 7/1/2022	\$10,846.70	
City Grant	\$0.00	\$2,000.00
Ice Cream Social	\$514.68	\$0.00
Annual Meeting	\$45.17	\$0.00
Block Parties	\$678.24	\$0.00
CERT	\$20.00	\$0.00
Newsletter	\$4,889.42	\$4,531.74
Fees	\$0.00	\$0.00
Branded Logo Items	\$0.00	\$158.00
New A-frame Signs	\$1,215.73	\$0.00
Total Withdrawals/Deposits	\$7,363.24	\$6,689.74
Ending balance 6/30/2023	\$10,173.20	

BIRDING IN MONTA LOMA

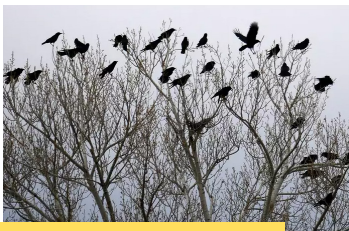
American Crows - Big Black Birds

By Dotty Calabrese

One of the most common and easiest to identify birds in the Monta Loma Neighborhood is the big, entirely black, American Crow. From Middlefield to Central, Rengstorff to San Antonio, in the park, in yards, in trees, on overhead wires, or on the ground, small groups of crows are seen, and their gregarious, "caw-caw" can be heard at any time of day. Crows will eat almost anything, from insects, snails, millipedes, small reptiles, amphibians, small mammals, eggs, and baby birds to grains, fruit, vegetables, garbage, and carrion. The American Crow (formerly called the Common Crow) has adapted well to life with human neighbors.

The American Crow is 17-21" long with a wingspan of 33-40", and a square or fan-shaped tail. It has brown eyes; black bill, legs, and feet; and black feathers with an iridescent violet or iridescent blue-green quality. In some lights, they look dark brown. Males and females look alike.

Historically, the crow has been persecuted by humans, who poisoned, shot, and sometimes even bombed their flocks in an attempt to remove them. Yet this incredibly intelligent bird has not only survived, but it also thrives. Scientific studies have shown that crows can count, solve puzzles, and remember symbols and even information!



©Robert Alexander

Crows live in large family groups, where several generations of offspring (mostly the males) remain with their parents to help raise new generations before establish-

ing their own territories to breed. These older offspring help to build the nest, feed their mother while she sits on the eggs, feed the babies, and chase off potential predators. This is why crows are usually seen in groups rather than alone.



©Gary Henry

Over 30 years ago, a particularly friendly crow developed a "relationship" with our dog, D.J. Each day the crow would land on our backyard fence and "Caw!" at D.J., who would bark back and chase the crow along the fence. This ritual would continue for 2-5 minutes. Then, the crow would fly away, returning the next day at about the same time to repeat the interaction. The crow came back every day for about a month to visit with D.J.

Email your bird questions to me at dottycala@aol.com

AMERICAN CROW FUN FACTS

Crows are among our most intelligent birds. They work together, devise solutions to problems, can recognize human faces, and are born with a vocabulary of several dozen calls. They have even been observed dropping shelled nuts onto busy roads to wait for automobiles to crack them open.

Many animals use make and tools, including some New Caledonian crows, who live on islands east of Australia. They will find a good stick, sharpen forked twigs into hooks, and use it to scoop larvae and worms from holes in wood.



Hobbledehoy
Montessori Preschool

Owner Operated
since 1990

www.hobbledehoy.org

We offer FULL-TIME and PART-TIME programs for children ages 2-5 years old.

(650) 968-1155

2321 Jane Lane ★ Mountain View



Progressive Dinner 2024

Are you interested in reviving the neighborhood progressive dinner event? If interested, please contact Karla Valente at klvalente@yahoo.com.

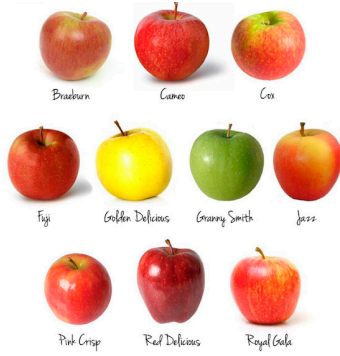
What's growing on?

By Elaine Lou

A warm hello to ML neighbors! I had the pleasure to meet many new and familiar faces at the Apple Tasting during the 2023 MLN Ice Cream Social.

The Apple Tasting was hastily put together and possible only with the help of many generous ML neighbors who contributed fresh picked apples from their tree. We had about ten apple varieties to taste, a mere snapshot of the apples grown in MLN as some apples were not yet ready to harvest and a few others had already passed.

Some neighbors appreciated the lesser known heirloom (tart) apples, though many gravitated towards the more familiar, sweeter apples. Everyone had distinct favorites. Some children were too busy with their ice cream cones to eat apples, but at least one child put down her ice cream long enough to have an apple slice--and later came back for more!



Support Mountain View businesses

Support our local businesses and community with the *I Love Mountain View Gift Card*! This digital gift card can be used at over 30 popular local shops, restaurants, attractions, and services across Mountain View.

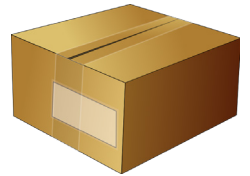
Studies show that dollars spent at local independent businesses recirculate three times more in our local economy compared to chain stores. So you'll supercharge support for our community! The *I Love Mountain View Gift Card* is easy to purchase online. Learn more at appyiftee.com/gift-card/i-love-mountain-view.



Prevent holiday thefts

By Tom Purcell, Monta Loma Neighborhood Watch Captain


With the holidays approaching, we can expect a spike in package thefts. Take steps to avoid having deliveries loiter unattended on your doorstep. Many package deliveries offer detailed tracking information and delivery preference options so that you can make sure you or a trusted neighbor can secure a package soon after it's delivered.



For a tip sheet on preventing package theft as well as other helpful safety tips, visit the Neighborhood Watch page on montaloma.org.


Take care to avoid leaving signs that you're not home, such as empty trash bins at the curb. If you leave before your bins are emptied, ask a neighbor to roll them off the street. If you have home security cameras, include in the coverage area where you expect packages to be left.

Thefts from vehicles continue, so avoid leaving valuables in yours, and always lock it. The police urge you to call whenever you see anything that seems suspicious. For emergencies and in-progress incidents, call 911. For other matters, suspicious circumstances, or crimes that have already occurred, call the non-emergency number (650) 903-6344.



**MIDDLE & HIGH SCHOOL
MOUNTAIN VIEW CAMPUS**

**LEARN MORE & ENROLL:
WALDORFPENINSULA.ORG**



**WALDORF
SCHOOL OF THE
PENINSULA**

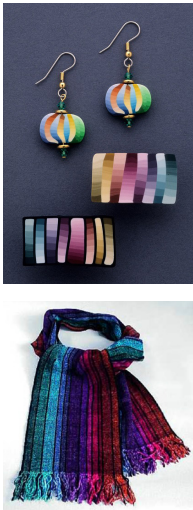
UPCOMING OPEN STUDIOS

Get to know your neighborhood makers and artists

Dotty's Holiday Open Studio

Hand-Weaving & Polymer Clay by Dotty Calabrese

Friday, December 1, 11:00 am–4:00 pm
Saturday, December 2, 11:00 am–4:00 pm



2465 Richard Ct.
(across from Thaddeus Park)

Stop by for holiday shopping, weaving demonstrations, hot cider, and cookies. Elegant hand-woven scarves & herbal pillows, polymer clothing buttons, needle cases, earrings, necklaces, bracelets, pins, badge holders, hair barrettes, cufflinks, and eyeglass chains.

All original designs.

Check out Dotty's work at
DottyCalabrese.com

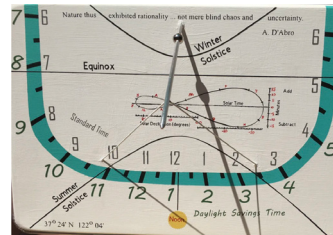
Jeff Kaiser's Sundial Exhibition and Sale

Sundials on exhibition, sundials for purchase, and customized designs designed for your site.

Saturday, December 2, 2:00–4:00 pm

247 Diablo Avenue

Check out SundialandHoya.com for a sundial photogallery.



Bespoke Science is My Temple Dial



Penguin Sundial

Selling Homes For Top Dollar In Mountain View Over 25 Years...

HOW WE CAN HELP YOU....

With no obligation we have helped many Sellers in Montaloma with the following:

NOT SELLING SOON?

- Great up-to-date ideas for home improvements with minimal investment, as well as medium to large sized remodeling projects

SELLING WITHIN 3 YEARS?

Unfortunately, most people improve their home just before they sell and never enjoy those upgrades...how sad!

- Call us for a walkthrough to share our proven market-preparation upgrades that provide the biggest bang for your buck / ROI when you are ready to sell
- Access to our Rolodex of tradespeople for those improvements
- Access to our Rolodex of tradespeople
- Names of local lenders for re-fi and lines of credit
- Understand the true value of your home verses what the websites say which are traditionally inaccurate
- Considering selling in 2023...call us for a zero-obligation consultation. Our Plan-Of-Action will ultimately provide the highest possible price for your home



SHELLY POTVIN
REALTOR®

650.303.7501

shelly@sereno.com

ShellyPotvin.com | DRE 01236885

sereno

CHRISTIE'S
INTERNATIONAL REAL ESTATE

MICHAEL SUTTON
REALTOR®

650.799.2253

sutton@sereno.com

DRE 01916467 | MichaelSuttonRealtor.com





**New Patients Welcome
Friendly Exceptional Services**

Shirley Irudayaraj DDS
10090, Pasadena Ave Unit A1
Cupertino, CA 95014
Call 408 498 0244
www.dovedentalsmiles.com

*From My Family to Yours,
Happy Holidays and a
Joyous New Year!*

THE TROYER GROUP

Your home is where our heart is

Thinking of Selling in 2024? Call David!

DAVID TROYER DAVID@DAVIDTROYER.COM 650.440.5076 DAVIDTROYER.COM LIC#01234450	BAIDRA MURPHY Managing Broker PROUD MONTA LOMA RESIDENT 650.383.7201 BAIDRA@DAVIDTROYER.COM LIC#01216142
-------------------------------------------------------------------------------------------------	------------------------------------------------------------------------------------------------------------------------------------

INTERO
A Berkshire Hathaway Affiliate

Spring into the New Year with...

Pacific Ballet Academy
Classes for all ages - Take a free trial class today!
pacificballet.org - 650-969-4614
director@pacificballet.org

Serving Monta Loma for More than 40 Years!



*Wishing you Happiness
for the Holiday Season...*

The Monta Loma Specialist

Visit my blog at www.Lmercerc.com
for market updates and
home improvement ideas.

Lynne Mercer
650.906.0162 • Lmercerc@Compass.com
DRE# 00796211