



# MONTA LOMA NEIGHBORHOOD NEWS

## ANNUAL MEETING

Join the Monta Loma Neighborhood Association in-person for our annual meeting on Wednesday, June 14, 2023.

Chat with neighbors, elect new board members, and hear from select city speakers.

**DATE:** Wednesday, June 14

**LOCATION:** GoogleX / Rails, 250 Mayfield Ave.  
(Southwest corner of Monta Loma Neighborhood)

Please arrive early. Google has generously offered use of their meeting space. Masks are optional.

Refreshments will be served.

### SCHEDULE OF EVENTS

7:00 pm Doors open for setup and socializing.

7:15 pm Meeting begins with President's update

7:20 pm Presentation of candidates and voting

7:35 pm City-official presentation: How to stay connected with the City of Mountain View

8:30 pm Conclude meeting

## Plan your block party

Nine block parties have already been planned for this summer and fall, and we look forward to more. A block party is an excellent opportunity to connect with your neighbors, foster a sense of camaraderie, and promote a safer neighborhood by exchanging contact information. To promote these goals, the MLNA will help pay for your party.

It's wise to set the date for your street's party now. Note that to block off a street you must obtain a permit and **allow at least 30 days** for it to be processed.

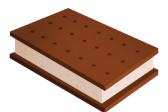
If you're unsure how to get started, we have provided comprehensive guidelines on our website, [montaloma.org](http://montaloma.org). Simply visit the Events section and click on "Block Parties" to access detailed information, including instructions on borrowing orange safety cones and Road Closed signs. For your convenience, you can also find a printable version of this information at the bottom of the page.

Our Neighborhood Watch Captain, Tom Purcell on Alvin, would be happy to visit your party to meet your neighbors and discuss security. Contact Tom at [MontaLomaNBC@gmail.com](mailto:MontaLomaNBC@gmail.com).

## Save the date - Ice Cream Social will be August 27, 3:00 to 5:00 pm



Mark your calendars! The annual neighborhood Ice Cream Social will be held as usual at the Monta Loma Park on Sunday, August 27. Enjoy an afternoon with live music, meet new neighbors and chat with old friends. If you are new to the neighborhood (or even if you are not) stop by the Welcome Wagon Team table for information about our wonderful neighborhood.



### IN THIS EDITION:

MLNA Board Candidates	p. 2
Monta Loma Music Share	p. 5
Birding in Monta Loma: Part 4	p. 9
Helpful Neighborhood Hints	p. 10

**President**

Nirvana Nwokidu  
[president@montaloma.org](mailto:president@montaloma.org)

**First Vice President**

Open Position

**Second Vice President**

Olga Bright  
[vp2@montaloma.org](mailto:vp2@montaloma.org)

**Treasurer**

Andre Valente  
[treasurer@montaloma.org](mailto:treasurer@montaloma.org)

**Secretary**

Alice Pang  
[secretary@montaloma.org](mailto:secretary@montaloma.org)

**Members-at-Large**

Marilyn Gildea (communications)  
 Tricia DelGaudio  
 Jennifer Dell-Ernstrom  
 Anish Morakhia  
 Baidra Murphy  
 Alan Whitaker

**MLNA Newsletter****Editor & Member-at-Large**

Jennifer Dell-Ernstrom  
[newsletter@montaloma.org](mailto:newsletter@montaloma.org)

**Layout & Member-at-Large**

Tricia DelGaudio  
[newsletter@montaloma.org](mailto:newsletter@montaloma.org)

**Advertising Manager**

Baidra Murphy  
[ads@montaloma.org](mailto:ads@montaloma.org)

**Illustrations/Photos**

If interested in contributing, please email the editor with content ideas. Submissions of relevant cartoons also welcome.

© 2023 by the Monta Loma Neighborhood Association. All rights, including electronic posting and distribution, reserved. Individual article rights revert to the authors, and permission must be obtained from them to re-use their articles in any way.

**MLNA BOARD CANDIDATES**

**Olga Bright, candidate for Second Vice President**, has lived in Monta Loma for three years. "My husband and I moved here after we retired to be closer to our five grandchildren. We love Monta Loma because its cohesive neighborhood identity makes it a great community to live in. We enjoy walking to the park, bicycling to Shoreline, playing tennis, and participating in area hikes. I hope to contribute to building this vibrant community by volunteering for our local neighborhood events."

**Andre Valente, candidate for Treasurer**, has lived in Monta Loma for 11 years and has been the MLNA Treasurer for 8. He also helps run the MLNA online services (site, lists, emails). He's more introverted, but you may have met his wife, Karla, who has been active in many neighborhood activities including the Progressive Dinner, the Garden Club, and setting up the Little Free Library on the corner of Fay and Jewell. Andre feels very lucky to have found Monta Loma.



**Baidra Murphy, candidate for Member-at-Large**, is a life-long resident of the Bay Area and has been in Monta Loma for 17 years, most recently serving as MLNA Secretary for five years. She truly believes it is a special neighborhood. She has one child at Los Altos High School, and she works in Los Altos as a real estate broker. She earned her BFA in photography, loves to knit with our knitting group, and is an avid genealogist. She thanks you for making Monta Loma a special place to call home.

**Marilyn Gildea, candidate for Member-at-Large**, moved from a second-floor condo to an Eichler so she wouldn't have to move again until she is wheeled out. Two years after her arrival, she became the newsletter editor, from 2004 until 2019. She helps organize MLNA events. As the longest-serving member, she is the Board's institutional memory.



**Tricia DelGaudio, candidate for Member-at-Large**, moved to the Bay Area from NYC and has lived in Monta Loma for more than 5 years, serving as MLNA's President for 3 years. Today she is the current layout artist for the Monta Loma newsletter and you'll find her swapping fruit with neighbors, baking or canning, and enjoying the 260 days of sunshine that California offers with her family.

## MLNA BOARD CANDIDATES



**Jennifer Dell-Ernstrom, candidate for Member-at-Large**, moved to Monta Loma in May 2021 with her husband, Lars. Since August 2022, she has been editing the newsletter and enjoys discovering neighborhood news and expanding her knowledge of local birds and trees. You can see Jennifer on work break walks en route to buy bread at The Midwife and the Baker or groceries at the local Safeway.

**Anish Morakhia, candidate for Member-at-Large**, moved to Monta Loma in June 2020 with his wife and recently welcomed a baby girl. He enjoys strolls with his daughter around the neighborhood appreciating the friendly smiles, beautiful yards and the park. For the past year, he has been part of a group trying to increase the tree canopy and improving the parks in our community. He hopes to continue this endeavor in the upcoming year.



**Alan Whitaker, candidate for Member-at-Large**, a local native and Monta Loma Eichler home-owner for 28 years. Presently a Member-at-Large, Traffic/Parking Liaison, and liaison to the Palo Alto Garden Apartments. He will continue to offer his resourcefulness and use the powers granted within the Association Bylaws for the benefit of the Monta Loma Neighborhood. Alan also enjoys sharing the benefits of gardening with California native plants and promoting / maintaining local bird and butterfly habitat.

### Neighborhood Resources

#### Community Emergency Response Team (CERT)

Tim Slattery, 650-964-6389  
[CERT@montaloma.org](mailto:CERT@montaloma.org)

#### Neighborhood Watch Coordinator

Tom Purcell, 650-224-5110  
[MontaLomaNBC@gmail.com](mailto:MontaLomaNBC@gmail.com)

#### Traffic/Parking Liaison

Alan Whitaker, 650-279-3375  
[traffici liaison@montaloma.org](mailto:traffici liaison@montaloma.org)

#### Stay Connected with MLN

To subscribe to the email list at  
[montaloma-post.org](http://montaloma-post.org)

Find Monta Loma on  
[NextDoor.com](http://NextDoor.com)

#### MLNA Websites

[montaloma.org](http://montaloma.org)  
Referrals: [localwiki.org/montaloma](http://localwiki.org/montaloma)  
Webmaster: Việt Hoà Dinh  
[webmaster@montaloma.org](mailto:webmaster@montaloma.org)



### Thanks to those who delivered the March newsletter:

Jill Rakestraw, Ivy Lu, Nirvana Nwokidu, Tracey Ostebo, Andy Coe, Linda Powers, Olga Bright, Maria Nelson, John Canata, Maria Harnato, Diane McCleary, Elizabeth Eaton, Paul Kostka, Jennifer Dell-Ernstrom, Dave McCleary, Chuck & Cookie Carnakie, Herb & Victoria Henderson, Martha Elderon, Irgitollhaham Lrundlm, Cheryl Smith, Leane Reelfs

Do you have an hour to spare? We welcome new volunteers, even if you can help only occasionally. It's a great way to get to know your neighborhood and get an hour's exercise.

Contact Linda Powers at  
[lindapowers.007@gmail.com](mailto:lindapowers.007@gmail.com)

*This summer's election is expected to be an uncontested election with everyone who volunteers to have a seat on the board.*

*We are looking for new candidates to take on the roles of President, First VP and Secretary.*

*We thank all of our prior board members who have chosen to pass the torch for their service to the community.*

*Please join your neighbors for the annual meeting to formally elect this group of dedicated individuals.*

Meeting details on page 1.



## Why become a Grand Juror?

by Jennifer Dell-Ernstrom

Liz Wee had recently retired and was looking for volunteer opportunities when she saw that applications were being accepted to be on the Santa Clara County Civil Grand Jury. As a longtime Monta Loma resident, she thought that this might be an interesting way to serve her community and learn more about the administration and operation of local government.

I had the opportunity to sit down with Liz to learn more about this incredible experience and what it means to serve as a Grand Juror. Unlike jury duty, being part of the Civil Grand Jury is a voluntary commitment lasting one year. It's a busy year working alongside amazing individuals and requires a commitment of at least 25 hours per week. Grand Jurors receive a \$20 per diem for meetings and Grand Jury activities, along with mileage reimbursement. While many Grand Jurors are retired, Liz's term included stay-at-home parents, university students, and self-employed individuals. The goal is to have a diverse group with varied backgrounds and experiences.

The group forms in January and, with the assistance of "holdovers" who continue for a second year, the new members review complaints that have been received and gather insights from holdovers regarding the previous year's work. Members then decide which issues they want to address and in what capacity. The program intentionally allows flexibility, enabling members to choose the reports they work on and the specific contributions they make, such as interviews, writing, editing, and more. Dedicated office space is available, and some members prefer working on-site.

Certain statutory requirements must be fulfilled by the Grand Jury, including jail visits. Liz was part of the committee responsible for organizing on-site jail visits. Santa Clara County has various types of jails, such as a juvenile hall, juvenile rehabilitation center, county jail, etc. Grand Jury members visited four facilities and wrote visit reports but did not conduct investigations of the jails.

Once reports are completed, they undergo review by the county attorney before being signed off by the presiding judge. The agencies addressed in the reports are also notified as part of the process, so reports must be submitted by the fall.

Last year, the Grand Jury authored seven reports, all of which are available to read online (see website listed below). These reports have a tangible impact and don't merely gather dust on a shelf. For example, one report regarding governance ethics of certain Santa Clara City Council members made headlines in April when Council member Anthony Becker was charged with perjury for lying to the Civil Grand Jury.

Are you interested? The Santa Clara County Superior Court is currently accepting applications for the 2024 jury, which begins its term in January. For more information, visit: [www.sccscourt.org/court\\_divisions/civil/cgi/grand\\_jury.shtml](http://www.sccscourt.org/court_divisions/civil/cgi/grand_jury.shtml)



## CERT Team in action!



*In February, the CERT team installed a new shed.  
Gil D., John P., Dave E.*



*In May, the CERT team engaged in the Incident Command System (ICS) Land game, a role-playing simulation that replicates team activation and response in the event of an emergency, such as an earthquake. This game allows team members to practice their skills and coordination within the framework of the Incident Command System. This is the same system used by fire departments all over the US, and is the structure implemented by FEMA for all their disaster response work. It gives all levels of response a common structure and terminology so that it is easy to work together and integrate different agencies and layers (as in neighborhood, county, state) with a system all of them use. By participating in this simulated exercise, the CERT team gained valuable experience and enhanced their ability to effectively respond to real-life emergencies. They plan to play it again soon!*

## Monta Loma Music Share - Next Meet-up June 24, 2:00-4:00 pm

By Lindsay Sterling



Front from left: Maryellen Wolfers, Jeanne and Marty Fouts

Back from left: John and Lindsay Sterling, Pete Sommer, Chris Lunt

Neighborhood residents put on a musical showcase spanning an impressive range of periods and styles at the first Monta Loma Music Share hosted by Lindsay and John Sterling at their home on Laura Lane.

Maryellen Wolfers transported the group to the 1800s with her rendition of "Angelus Bell" by Finnish composer Jean Sibelius. Next, Jeanne Fouts brought us the big chords and bassline jumps of the American classic, "Maple Leaf Rag," by Scott Joplin. Marty Fouts traversed the centuries with his masterful classical guitar renditions, which included the beloved English folk tune "Greensleeves," a captivating Latin American melody titled "Diablo," and heartfelt interpretations of Simon & Garfunkel's "Scarborough Fair" and "Parsley, Sage, Rosemary, and Thyme."

Chris Lunt, a former rock drummer who is now playing accordion and ukulele, treated the audience to a selection of tunes including a modern folk composition by Pete Jung called "Far Away." Pete Sommer played guitar and sang "Mutineer" by Warren Zevon. He shared that Jason Isbell and Amanda Shire do a beautiful cover of it. Lindsay Sterling sang and played the piano tune by Norah Jones, "Come Away with Me."

Doug and Julie Scott, John Canata, and John Sterling were gracious listeners and joined the group jam/singalong, which featured favorites by the Eagles, Dobie Gray, the Everly Brothers, and Elton John. It was a great time and we look forward to getting together again.

The Monta Loma Music share is for teens and adults to share live music with neighbors. If you're interested in joining us, email [lindsay@lindsaysterling.com](mailto:lindsay@lindsaysterling.com) to get email confirmation of the next date and time. Tentative dates: June 24, September 8, and January 13 from 2 to 4 pm. Additionally, if you would like a local band to perform at your block party, please reach out to Lindsay via email.

## Your Guide to Buying a Used Car: Tips from The Car Gal at Helming's Auto Repair

By Leane Reelfs, The Car Gal at Helming's Auto Repair



Are you in the market for a used car and wondering where to start? Look no further! When it comes to recommending reliable and affordable used cars, our top choices are Honda and Toyota, followed by Mazda and Nissan. These brands have a proven track record of durability and relatively lower maintenance costs. While Hondas and Toyotas may come with a higher initial price tag, they tend to last longer, making them a worthwhile investment. On the other hand, that seemingly great deal on a BMW for your high school kid may not be as appealing once you consider the hefty expenses of oil changes (nearly \$200) or a brake job (close to \$900). The maintenance costs for VW/Audi vehicles are similarly steep. We understand that European cars have their allure, but it's essential to factor in the higher maintenance expenses they entail.

Here are some key points to keep in mind while shopping for a used car:

- **Mileage and Maintenance:** Most cars require major services, such as spark plug replacement (ranging from \$300 to \$1000) or timing belt replacement (costing between \$1100 and \$1700), around the 100,000-mile mark. Additionally, if you're considering a hybrid vehicle, be aware that the battery warranty typically covers around 100,000 miles and replacing it can cost approximately \$5000. Take these potential expenses into account when evaluating a used car.
- **Get a Thorough Inspection:** Before finalizing a purchase, we strongly advise having a trusted mechanic thoroughly inspect the used car. Even certified pre-owned vehicles can have underlying issues that may not be immediately apparent. For example, we had a customer bring us a certified used car and we immediately knew that it had been in an accident because the trunk and doors on the right side did not line up perfectly. Mechanically, everything was fine, but it was shoddy body work. The next car she brought in needed struts, air filters and had some weird rust on the door. Remember, just because you're buying from a dealership doesn't guarantee a flawless vehicle. Don't hesitate to consult with your mechanic to gain valuable insights and avoid potential pitfalls.

With these tips in mind, you can navigate the used car market confidently and find a reliable vehicle that suits your needs and budget. Happy car shopping!

## Leadership Mountain View: Register Now for Class of 2023-2024

Discover the essence of our unique city and its inner workings through the Leadership Mountain View course. Participants gain invaluable insights and connections, often paving the path to becoming active community leaders. Secure your spot early as registration is now open for the Class of 2023-2024. The program consists of one Friday session per month from September to May, with program dates announced by July, typically falling on the third Friday of each month..



LEADERSHIP MOUNTAIN VIEW

For more information, visit [lmv.education](http://lmv.education) or reach out to Brian Kosinski at [brian.kosinski@lmv.education](mailto:brian.kosinski@lmv.education) or 650-279-9853. Don't miss this opportunity to unlock your leadership potential in Mountain View!

## The neighborhood's favorite outings to take in June

The MLN Share email list is a treasure! Thank you to all who responded with these fantastic ideas for summer day trips! Wishing everyone in the 'hood a summer filled with joy and relaxation!

### Hiking/Parks/Outdoors

- Falls Creek trail at Henry Cowell State Park near Felton - excellent short hike with historical elements.
- Hike the ridge trail at San Bruno mountain - sweeping views in all directions.
- Hike to the top of Mission Peak from the parking lot at Ohlone College, Fremont.
- Hike Mt Diablo.
- Hike Huddart Park trails - less strenuous and nice picnicking areas. Pay to park/enter.
- Check out the free & impressive Redwoods at nearby Purissima Creek Redwoods Open Space Preserve.
- Wander amongst the redwoods in Portola Redwoods State Park, Butano State Park, Huddard County Park, or Wunderlick County Park.
- Overnight at Mountain Home Inn, adjacent to Mt Tamalpais State Park; walk onto trails leading to Muir Woods.
- Spend the day at Point Reyes and Stinson Beach.
- Birdwatch at any of the bayshore parks: MV Shoreline, Palo Alto Baylands & Byxbee, and Sunnyvale Baylands.
- Volunteer at Veggielution ([veggielution.org](http://veggielution.org)) – free and healthy!

### Cultural/Museum

- Visit the Cantor/Anderson museums at Stanford. Their free tours are fabulous (Outdoor art, Museum overview, Rodin) Lunch at the Cantor Cafe is good too! [museum.stanford.edu](http://museum.stanford.edu)

- Visit Lick Observatory.
- Bike across Golden Gate bridge to Bay Area Discovery museum from Marina Green free parking. Check out the boats at the marina first.
- Take the Roaring Camp train to Santa Cruz or Steam Train through the Redwoods. Great fun! [roaringcamp.com](http://roaringcamp.com)
- For educational jaunts: Computer History Museum, Palo Alto Museum of American Heritage, Los Altos History Museum. For some hands-on science at a bit of a drive but well worth it: The Exploratorium ([www.exploratorium.edu](http://www.exploratorium.edu)) and the California Academy of Sciences in SF ([calacademy.org](http://calacademy.org)) and the Tech Museum in San Jose, also known as The Tech Interactive ([thetech.org](http://thetech.org)).

### Food/Hike/Beach Combo

- Memorial County Park - then head to Pescadero for a snack, followed by Pescadero beach. Return on Highway 84.
- Drive up to Half Moon Bay (HMB), eat a Barb's Fish Trap ([barbarasfishtrap.com](http://barbarasfishtrap.com)); then drive over to Fitzgerald Marine Reserve and hike along the cliffs. You can also walk around downtown HMB.
- Go to Pacifica and grab coffee at SOUL GRIND ([soulgrindcoffee.com](http://soulgrindcoffee.com)) and walk around Mori Point.
- Half Moon Bay downtown scavenger hunt.

### Road Trip

- Leisurely drive Highway 160 to explore the Delta-Suisan Bay region; perhaps rent a houseboat overnight.
- Enjoy a weekend in San Francisco! I recommend Hotel Zoe. It's the perfect compromise for visiting Fisherman's Wharf but avoiding the crowds. Easy walking distance, and close to transportation. And dinner at the North Beach Restaurant is excellent for a superb Italian dinner.

*continued on pg 7*



continued from pg 6

- Drive to Carmel early and hike Point Lobos; then go to Refuge, an outdoor spa in Carmel ([refuge.com](http://refuge.com)). Book massage appointments ahead of time if you wish; then go into town and eat on the patio at Mission Ranch Restaurant ([missionranchcarmel.com](http://missionranchcarmel.com)) or a great breakfast place called Stationaery, ([thestationaery.com](http://thestationaery.com)) or lunch at Carmel Belle ([carmelbelle.com](http://carmelbelle.com)).

### Wine tasting

- Picchetti Winery in Cupertino ([picchetti.com](http://picchetti.com)). \$20 for 5 pours (you select from a list of wines). Picnic tables are available if you want to buy a bottle and enjoy with food. You can hop onto Mid peninsula Regional Open Space District's Zinfandel Trail right at the winery... it connects with other trails in the Picchetti Ranch Preserve.
- Hike a trail at Fremont Older Open Space Preserve that takes you into Cooper-Garrod Vineyards for tastings and snacks. ([garrodfarms.com/visit](http://garrodfarms.com/visit))
- Byington Winery in the Santa Cruz mountains ([byington.com](http://byington.com)). They are dog friendly, have a bocce court and beautiful views and even a short hiking trail.

## HELMING'S AUTO REPAIR

Complete Car Care and Maintenance  
*Serving the Community Since 1976!*

- Owned by a Monta Loma Family
- Most Makes and Models
- Convenient 24-hour Drop-Off/Pick Up
- Certified Bay Area Green Business
- Superior Service You Can Trust
- A Certified Smog Check Facility

*We do buyer's inspections when  
you buy a used car!*



Always a great job --  
I can trust Helming's'  
crew to make recom-  
mendations to keep  
me safe." - Judy S.



**Helming's Auto Repair**  
2520-G Wyandotte Street  
Mountain View, CA 94043  
[www.helmings.com](http://www.helmings.com)  
**650-988-0460**



Successfully serving  
Monta Loma for  
more than 20 years

*How can I help you?*



## Nancy Adele Stuhr

Mountain View Neighborhood Specialist

**650.575.8300**

[nstuhr@sereno.com](mailto:nstuhr@sereno.com)  
[www.nancystuhr.com](http://www.nancystuhr.com)  
CalDRE# 00963170

CHRISTIE'S  
INTERNATIONAL REAL ESTATE  
SERENO

sereno  
**1% For Good**  
CHARITABLE FOUNDATION

## Garage Sale Report

Having the most dots on the city's citywide garage-sale map brought shoppers flocking to Monta Loma on Saturday, May 6, making our fourth annual neighborhood garage sale another huge success.

Despite the cool and showery weather, neighbors enjoyed visiting while finding bargains. Wouter Suverkropp "had tremendous fun" chatting with the local woodworkers who came to see the table saw he'd advertised.

Joan MacDonald is grateful to the many neighbors who contributed items to sale, which benefited the Community Health Awareness Council (CHAC). Others donated the profits of their sales, making the total raised for CHAC the highest ever.

A total of 46 Monta Loma households had registered to participate, some on the Monta Loma list and map, others on the citywide site, and some on both lists. Other neighbors posted their addresses and offerings on the neighborhood email list on the day of the sale, bringing the total households participating to more than 50.



Joan MacDonald and Alan Whitaker help eager customers

*Photo courtesy of the City of Mountain View*

## Upcoming FREE community concerts at the Community School of Music and Arts (CSMA):

### • Sarah Cahill: Five Centuries of Chaconnes

Saturday, June 10, at 7:30 pm

*Cahill traces the life cycle of the Chaconne, a musical form originating in the Baroque period, from its origins up to the present.*



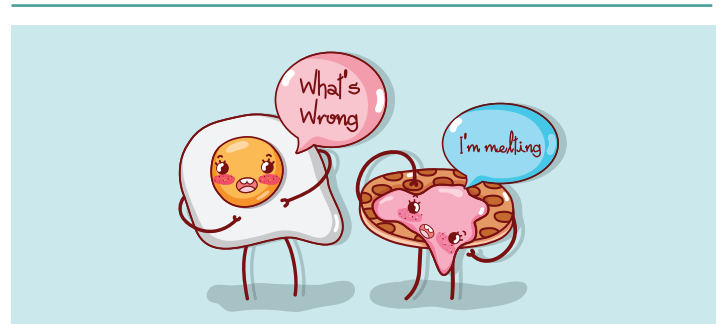
Location:

CSMA – Tateuchi Hall

230 San Antonio Circle, Mountain View

Note: This is a free community concert and seating is first come, first served. No advance tickets are available. Face masks are strongly recommended inside Tateuchi Hall.

For more information visit [arts4all.org](https://arts4all.org)



## Monta Loma Spring Super Bloom





# BIRDING IN MONTA LOMA

## Part 4: Common neighborhood birds

By Dotty Calabrese

Since my last column in February, I hope you've been able to spot an American Crow, a Western Scrub-Jay, a Black Phoebe, and/or a Nuttall's Woodpecker.

Northern Mockingbird



By now, most of our winter visitors (Cedar Waxwing, Ruby-crowned Kinglet, Yellow-rumped Warbler, Red-breasted Sapsucker) have flown north. Most of our resident birds are nesting or raising their young, as is our summer visitor (Hooded Oriole.)



House Finch, Male

Remember that now through August is a bad time to trim trees or prune bushes, unless there is an immediate safety concern, because birds are nesting and raising their young. To ensure the well-being of both birds and trees, it is advisable to schedule tree and hedge work between September and December.

House Finch, Female



Below are the final four of the list of our fifteen most common, year-round birds. Remember that bird lengths below are measured from tip of beak to tip of tail.

**Noisemaker Perched** on fences and tops of bushes/trees, also kept you awake all night singing in the tree outside your bedroom window, and recently seen dive bombing your cat: **Northern Mockingbird** 9"-

gray, white, and black.

**Twittering in the Trees, at Seed Feeders, and Plants in Seed:**

**House Finch** 5 1/4"- mottled light and medium browns - streaked breast - male has red head and throat, conical bill **Lesser Goldfinch** 4 3/8"- conical bill, short tail, yellow/yellowish-brown belly, black & white wings, greenish brown/blackish back and head (males,) plumage varies between seasons, male or female, and individual birds, easily overlooked, plentiful in our neighborhood **Chestnut-Backed Chickadee** 4 1/4" -black cap/throat, white under-eye stripe/breast, chestnut under and above wings and along upper back, short, thin bill, says its name, "chick' a dee" in its call

For visuals, songs, and more information, search any of these birds' names online.

Check the full list of birds seen in the Monta Loma neighborhood in the last 40 years at

[montaloma.org/monta-loma/neighborhood-birds/](http://montaloma.org/monta-loma/neighborhood-birds/)

Email your bird questions to me at [dottycala@aol.com](mailto:dottycala@aol.com)

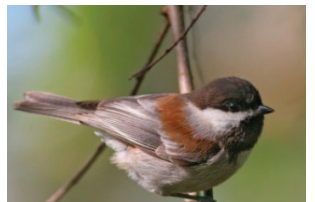
credit: Photos, with permission, by Tom Grey - [pbase.com/tgrey](http://pbase.com/tgrey)



Lesser Goldfinch, Male



Lesser Goldfinch, female



Chestnut-backed Chickadee



**Hobbledehoy**  
Montessori Preschool

Owner Operated  
since 1990

[www.hobbledehoy.org](http://www.hobbledehoy.org)

We offer FULL-TIME and PART-TIME programs for children ages 2-5 years old.

(650) 968-1155

2321 Jane Lane ★ Mountain View

**NOTARY  
PUBLIC  
And REALTOR**

**Contact Me:**  
**650-435-2349**  
[nirvana.nwokidu@gmail.com](mailto:nirvana.nwokidu@gmail.com)

**kW** BAY AREA  
ESTATES  
KELLERWILLIAMS.  
**DRE# 02142853**



A Proud Monta Loma Resident  
**NIRVANA NWOKIDU**

## HELPFUL NEIGHBORHOOD HINTS

### Donate your surplus fruit - Village Harvest

By Joan MacDonald

Many Monta Loma residents donate their surplus fruit through Village Harvest, which will send their volunteers to pick the fruit and take it to Second Harvest or CSA. My 70-year-old orange tree yielded 352 lbs. of oranges in addition to the two bags I'd asked the gleaners to save for my neighbors. Contact: [villageharvest.org](http://villageharvest.org) or 1-888-378-4841.

### Upcoming Events

#### Street Sweeping - June 8 and June 22;

July 13 and July 22: Help the sweeper

clean your gutter by moving your vehicles and trash bins off the street the evening before the second and fourth Thursdays of each month. Cars should be moved by 6:00 am. If you have tenants who park on the street, please keep them informed of dates as well.



**Repair Café - Sunday June 25:** Don't toss it, repair it. The next Repair Café session will be at the Museum of American Heritage, 351 Homer Avenue Palo Alto on Sunday June 25 from 11 am to 3 pm. Visit [repaircafemv.org/events](http://repaircafemv.org/events) for updated information.

**Confidential Paper Shredding - Saturday July 8:** Recycle confidential or sensitive paper documents, tax returns, bank statements, or health records at the SMaRT Station, 301 Carl Road in Sunnyvale on Saturday July 8 from 8 am to 3 pm. You may want to arrange a carpool via the mln email list. If you shred at home, please put the shreds in paper bags, stapled shut, so they won't litter the street when the recycling cart is emptied. More info at [tinyurl.com/MVshreds](http://tinyurl.com/MVshreds)

#### Household hazardous waste drop off - Saturday, August 26:

By appointment only. For more information or to make an appointment, contact the Santa Clara County Household Hazardous Waste Program at [HHW.org](http://HHW.org) or 408-299-7300.

**Prescription drugs take-back events:** There is a drop-off box for prescription drugs in the lobby of the Police/Fire Administration Building, 1000 Villa Street. Lobby hours: Mon-Fri 8:00 am – 5:00 pm. There are also events and drop-off locations available at no cost throughout the year through a countywide program.

### Register your bike: Get free QR code stickers

By Tom Purcell, Monta Loma  
Neighborhood Watch Captain



MLNA has purchased Bike Index QR code stickers and is offering them at no cost to all neighborhood bike owners. These stickers enable anyone with a smartphone to easily access the bike's registration page on Bike Index, a non-profit online bike registry. If the bike is found, anyone with a smartphone can quickly determine whether it has been reported as stolen, and reunite the bike with its owner. Sticker or not, I strongly encourage you to register your bike's serial number. It is an important tool in combating bike theft. Please email me at [MontaLomaNBC@gmail.com](mailto:MontaLomaNBC@gmail.com) if you want stickers for your bikes. There's currently no limit, as long as you have a bike to register and stick it on I should have enough. More Information is at [montaloma.org/free-bike-registration-program](http://montaloma.org/free-bike-registration-program)

## MIDDLE & HIGH SCHOOL MOUNTAIN VIEW CAMPUS

LEARN MORE & ENROLL:  
[WALDORFPENINSULA.ORG](http://WALDORFPENINSULA.ORG)



## Monta Loma welcomes new neighbors

By John Canata

Have you ever noticed a moving truck on your street or seen a new face or strike up a conversation with someone new? Then YOU are in a great position to help welcome them to our active Monta Loma Neighborhood. The Welcome Wagon Committee would appreciate you letting us know of any new residents to Monta Loma.

Our contact information is:

- John Canata, [canata350@comcast.net](mailto:canata350@comcast.net)  
cell phone: (650) 269-5646
- Brad Ostman, [ostmanbrad@gmail.com](mailto:ostmanbrad@gmail.com)
- Shelly Ostman, [ostman4@gmail.com](mailto:ostman4@gmail.com)
- Andrea Thomas, [anthomas589@comcast.net](mailto:anthomas589@comcast.net)

## Join our Monta Loma Neighborhood email list!

The 20+ year old Monta Loma Neighborhood email list is a major part of our close-knit community, and we encourage you to join if you haven't already. Information about the list is at [montaloma-post.org](http://montaloma-post.org)

## Monta Loma School News: From the PTA

By Tanya Ngo, Vice President

Thanks to all the Monta Loma families for supporting the PTA and for showing off their Leopard pride throughout this year's events! We are thrilled to share some exciting updates since our last communication. The PTA successfully revived the Walkathon fundraiser, meeting our fundraising goal of \$15,000! Additionally, we brought back the beloved 25¢ Used Book Sale and delighted teachers during Teacher Appreciation week with a delectable breakfast featuring pastries from The Midwife and The Baker.



Mark your calendars for Sunday, August 6th, as we gear up for our annual new families playdate, also known as the Juice Box Social, to be held at Monta Loma Park. The exact timing is yet to be determined, so we encourage you to join our communication platform, Konstella, to stay updated on all the details! Membership in the PTA is not required to join Konstella. Simply scan the QR code above to join and be part of our vibrant community. Have a wonderful summer!

## Selling Homes For Top Dollar In Mountain View Over 25 Years...

### HOW WE CAN HELP YOU....

With no obligation we have helped many Sellers in Monta Loma with the following:

#### NOT SELLING!

- Great up-to-date ideas for home improvements with minimal investment, as well as medium to large sized remodeling projects
- Access to our Rolodex of tradespeople
- Names of local lenders for re-fi and lines of credit

#### SELLING WITHIN 3 YEARS?

Unfortunately, most people improve their home just before they sell and never enjoy those upgrades...how sad!

- Call us for a walkthrough to share our proven market-preparation upgrades that provide the biggest bang for your buck / ROI when you are ready to sell
- Understand the true value of your home verses what the websites say which are traditionally inaccurate
- Access to our Rolodex of tradespeople for those improvements
- *Considering selling in 2022...call us for a zero-obligation consultation. Our Plan-Of-Action will ultimately provide the highest possible price for your home*



**SHELLY POTVIN**  
REALTOR®

650.303.7501  
[shelly@sereno.com](mailto:shelly@sereno.com)  
[ShellyPotvin.com](http://ShellyPotvin.com) | DRE 01236885

sereno—

**MICHAEL SUTTON**  
REALTOR®

650.799.2253  
[sutton@sereno.com](mailto:sutton@sereno.com)  
DRE 01916467 | [MichaelSuttonRealtor.com](http://MichaelSuttonRealtor.com)







**New Patients Welcome  
Friendly Exceptional Services**

**Shirley Irudayaraj DDS**  
10090, Pasadena Ave Unit A1  
Cupertino, CA 95014

**Call 408 498 0244**

[www.dovedentalsmiles.com](http://www.dovedentalsmiles.com)



**MORE MOUNTAIN VIEW HOME  
SELLERS CHOOSE DAVID, HERE'S WHY:**

WHILE INTIMELY MANAGED BY DAVID,  
a full team of specialists are available to  
assist with each step of the process.

VALUE ADDED SERVICES like staging,  
property inspection, home inspection, and  
pest inspection are all paid for by David.

DETAILED AND BUDGET-CONSCIOUS home  
preparation is entirely managed in-house.

THE MOST EXTENSIVE MARKETING PROGRAM,  
paid for by David with a full-time Marketing Manager  
and a professional advertising agency on retainer.

DAVID'S SELLERS IN 2022 RECEIVED ON  
AVERAGE 105% OF LIST PRICE



**THE TROYER GROUP**

Your Monta Loma home is where our heart is.

**WHAT CAN DAVID DO FOR YOU IN 2023?**

**DAVID TROYER**  
DAVID@DAVIDTROYER.COM  
650.440.5076  
DAVIDTROYER.COM  
LIC#01234450

**BAIDRA MURPHY**, Managing  
Broker  
PROUD MONTA LOMA RESIDENT  
650.383.7201  
BAIDRA@DAVIDTROYER.COM  
LIC#01216142

Spring into the New Year with...

**Pacific Ballet Academy**  
Classes for all ages - Take a free trial class today!  
[pacificballet.org](http://pacificballet.org) - 650-969-4614  
[director@pacificballet.org](mailto:director@pacificballet.org)

*Serving Monta Loma for More than 42 Years!*



**The Market is Picking Up Again...**

*If selling your home  
is in your plans for this year,*

*Be sure to contact Lynne Mercer...*

*The Monta Loma Specialist*

Visit my blog at [www.Lmercerc.com](http://www.Lmercerc.com)  
for market updates and home improvement ideas.

**Lynne Mercer**

650.906.0162 • [Lmercerc@Compass.com](mailto:Lmercerc@Compass.com)

DRE# 00796211

**COMPASS**