

# MONTA LOMA NEIGHBORHOOD NEWS

## SPRING IS IN THE AIR

Time to get out and enjoy the neighborhood for its green park, garage sales, live music, and even a sundial.

See inside for more details on upcoming neighborhood happenings.

### Working Committee Reports on the Monta Loma School Fencing Issue

By Heather Schoell, Editor

The Mountain View Whisman School District's plan to fence the park adjacent to Monta Loma School has been the subject of much discussion and debate over the last few months. A well-attended city council meeting at the end of January drew 25 community members who voiced their thoughts, opinions, and concerns about the school district's fencing proposal. Next steps included a statement to come from the City prior to a MVWSD "working group" meeting.

The school-district-organized working group is their latest attempt to hear community input and come to a mutually agreeable solution for the issues raised by teachers and parents looking for a more secure environment for their students at Mountain View public elementary and middle schools. This group consists of members of the community, school parents, school administrators, MV Parks and Rec, and school administrators.

Following are statements from various members of the decision-making process:

#### John Marchant, City of Mountain View Parks and Rec

The Mountain View City Council convened on February 23, 2021. The agenda included an item related to the Mountain View Whisman School District proposed fencing project and the Monta Loma Working Group. The purpose of this item was for the City Council to communicate the City's interests in continuing collaborative efforts to provide community access to open space and meaningful opportunities for input through the Monta Loma Working Group. In addition, the Council authorized the Mayor to send a letter to the District's Board of Trustees to transmit Council's feedback and priorities on those topics.

Six interests were identified by the Council as being important for the operation of the Monta Loma Working

Group. In addition, the Council identified three desired outcomes for the Monta Loma School location.

The Council also identified seven overarching priorities for access to open space at District sites in general. A copy of the letter from the Mayor to the Mountain View Whisman School District Board of Trustees can be found at [www.mountainview.gov/parks](http://www.mountainview.gov/parks).

The City will continue to be involved in the Working Group process that began Thursday, February 25, 2021.

*(Continued on page 3)*



After Thanksgiving, the neighborhood held a "Gratitude Chalk Walk" where neighbors came out to express our love for our central green space.

MLN fencing-related topics e-mail discussion group: [groups.google.com/g/fencing-monta-loma](https://groups.google.com/g/fencing-monta-loma)

#### IN THIS EDITION:

Neighborhood Garage Sale, May 1	p. 2
Planning for MLNA Board Elections	p. 2
Helpful Hints	p. 6
Neighborhood Fun and Games	p. 9

**MLNA Board Members**

Phone messages: (650) 691-5258

**President**

Tricia DelGaudio  
president@montaloma.org

**First Vice President**

Chris Williams  
vp1@montaloma.org

**Second Vice President**

Nirvana Nwikidu  
vp2@montaloma.org

**Treasurer**

Andre Valente  
treasurer@montaloma.org

**Secretary**

Baidra Murphy  
secretary@montaloma.org

**Newsletter Editor**

Heather Schoell  
newsletter@montaloma.org

**Member-at-Large**

Marilyn Gildea (communications)  
member-at-large@montaloma.org

**MLNA Newsletter**

**Editor & Layout**

Heather Schoell  
newsletter@montaloma.org

**Advertising Manager**

Baidra Murphy  
ads@montaloma.org

**Illustrations/Photos**

If interested in contributing, please e-mail the editor for content ideas. Submissions for relevant cartoons also welcome.

© 2021 by the Monta Loma Neighborhood Association. All rights, including electronic posting and distribution, reserved. Individual article rights revert to the authors, and permission must be obtained from them to re-use their articles in any way.

**Neighborhood Garage Sale Saturday, May 1**

*By Marilyn Gildea*

Mark your calendar now, and plan to participate as a seller and/or a shopper, or just go for a walk to see your neighbors.

Our neighborhood garage sale in 2019 gave us all an excuse to walk around the neighborhood and chat with neighbors on a lovely May day. In addition to the 21 families who had publicized their sales, many others put out their "giveaways" at the end of their driveways, and some enterprising kids had lemonade stands.

That event was such a success that we planned to do it again last year, but had to cancel it due to the pandemic. Now that we know that it's safe to be outdoors and to chat briefly with others if masked and keeping a distance, we will hold the sale this year on Saturday, May 1.

If you are planning a garage sale (big or small), this will be the ideal day to attract the most customers. To have your sale be publicized in Monta Loma, register at montaloma.org or contact Marilyn Gildea at marilyn@gildea.com.

Note: Due to city staff having to work remotely, there will be no city-wide garage sale this year.

**Serve Your Community Close to Home**

You are invited to volunteer to be part of our Monta Loma Neighborhood Association Board. Whether your aspirations are to get involved with politics at a very local level or you love coming up with fun ways to build community, serving on the board is a great way to contribute. All members will be up for re-election and we welcome hearing from anyone who is interested in serving on the board either now or in the future. If you're interested in learning more, the positions are described at montaloma.org under MLNA.

The annual general meeting and board election will take place virtually in early June. If you want to contribute to our Monta Loma community and be added to the ballot for election, please contact any board member.



*Board Member Nirvana Nwikidu shows her neighborhood pride at the Gratitude Chalk walk last November.*



## Monta Loma Park Fencing Working Group Updates *(From pg. 1)*

Rebecca Westover, MVWSD Business Officer

Members of the Working Group met for the first time on Feb. 25. This group is tasked with exploring solutions, amenable to both MVWSD and the community, to secure the Monta Loma Elementary campus during the school day.

Mr. Marcus Hibser, who has experience in construction and project management, will objectively facilitate the group. City and School District staff are pleased that Mr. Hibser is facilitating the meeting.

The role of the group is to work collaboratively, supported with data and expertise from City and District staff, to create a recommendation to the Superintendent. Members commit to working within the process and to supporting communication with their neighbors on the group's schedule.

Considerations of the Work Group:

- Respond to the District's Master Facilities Plan to create a feeling of safety on the Monta Loma Campus
- To share perspectives regarding the school and the open space
- To understand and balance needs and to collaborate on a successful solution to all of the issues
- Access to park and open space
- Maintain the community feel
- Provide a safe campus for students and staff

Next steps: Mr. Hibser has reached out to all work group members to coordinate future meeting times. Documents and information will be posted at [mvwsd.org/MLfence](http://mvwsd.org/MLfence) for the community's review. The District is looking forward to future meetings to discuss solutions that can fit everyone's needs.

### Jessica Chohan and Hillary Miller, MLN Working Group Representatives

The Working Group held its first meeting on February 25, and was facilitated by Marcus Hibser, from the fencing project's architecture firm. The meeting began with introductions and setting the tone from the Superintendent. This was followed by meeting agreements and discussion on concerns about having neutral facilitation as requested by Mountain View City Council and community members, and ensuring inclusion of all representatives. Finally, each member of the group shared their goals for the working group.

We both share the goal that this group is able to work together for the good of our entire community to find an agreeable solution to the need for maintaining our limited open park space while providing security for the students and staff.

We'd like to hear from you on how you use the park, what you love about the park, thoughts on the District's proposals, and potential alternatives. Here is a form to fill out that will help us collect this feedback and bring it to the Working Group - <https://forms.gle/TNYVs1YuyJDeqBLE9>.

The group plans to meet twice per month and the meetings are open for public observation. They are not being recorded. We will do our best to keep the community updated through the links below, and would appreciate neighborhood participation and feedback throughout this process.

To get our updates or share your feedback directly with us, please join this email list: <https://groups.google.com/u/1/g/mv-parks/>

Neighborhood group supporting Monta Loma Park Preservation: [www.preservemontalomapark.org](http://www.preservemontalomapark.org)

MVWSD Monta Loma project link: [mvwsd.org/MLfence](http://mvwsd.org/MLfence)

We appreciate your support and if you have any questions or input to provide, please let us know.

### Neighborhood Resources

#### Community Emergency Response Team (CERT)

Tim Slattery, (650) 964-6389  
[CERT@montaloma.org](mailto:CERT@montaloma.org)

#### Neighborhood Watch Coordinator

Tom Purcell, (650) 224-5110  
[MontaLomaNBC@gmail.com](mailto:MontaLomaNBC@gmail.com)

#### Traffic/Parking Liaison

John Canata, (650) 269-5646  
[traffici liaison@montaloma.org](mailto:traffici liaison@montaloma.org)

#### MLN E-mail List

To subscribe, send a message with subject 'help' to [mln-request@lists.montaloma.org](mailto:mln-request@lists.montaloma.org)  
Contact moderator:  
[mln-owner@lists.montaloma.org](mailto:mln-owner@lists.montaloma.org)

#### MLNA Websites

[www.montaloma.org](http://www.montaloma.org)  
Referrals: [localwiki.org/montaloma](http://localwiki.org/montaloma)  
Webmaster: Việt Hoà Dinh  
[webmaster@montaloma.org](mailto:webmaster@montaloma.org)



Thanks to those who delivered the last newsletter:

Susan Jee, Silke Gurlich, Leane Reelfs, Vania Mendonca, John Thomas, Raymond White, John Canata, Maria Harnoto, Diane McCleary, Dave Erskine, Paul Kostka, Ivy Lu, Dave McCleary, Chuck & Cookie Henderson, Herb Perry, Martha Elderon, Grant & Birgit Grundler, Isabella Hill

We welcome more volunteers, even those who can help only occasionally. It's a good way to get to know your neighborhood and get an hour's exercise. Contact the editor to learn more.

## Stay Safe, Park Smart, Keep Watch

By Tom Purcell, Monta Loma Neighborhood Watch Captain

During the pandemic, crime statistics have shown declines in many categories, although vehicle theft is up in Monta Loma and all around the Bay Area. It is important to take steps to protect your vehicle and its contents. The best solution is parking your car inside a locked garage. If you cannot park inside, make sure you always lock your car, even if you are away for a short period of time. Visible valuable items will make a vehicle an attractive target—including bags regardless of their contents. Avoid keeping your garage door remote inside the car.

The metals inside your car's catalytic converter have become extremely valuable. Thieves have polished their techniques so that they can swipe catalytic converters off some car models in seconds. Your mechanic or local muffler shop can install additional protection for your catalytic converter.

One of the best deterrents to crime is a neighborhood presence and awareness. Go for walks, greet your neighbors, keep an eye on suspicious activities. We've had more than one instance of crime deterred because of observant neighbors. Neighborhood watch works when you participate.



## MLN Email List Moderator Update

By Debbie Cunningham and Apollinaris Schoell

The MLN email list celebrates 20+ years of community communication. Thank you to both Peggy Manor and Leane Reelfs for their dedication and service to our neighborhood as past list moderators. Peggy managed the list for an incredible 14 years and decided to retire as owner and moderator last year.

We wanted to introduce ourselves as the new team of list moderators, Debbie and Apo. We want to continue to manage the list in the best way we can. As part of modernizing the infrastructure we moved it to a new software version and hosting. Thanks to the MLNA for continuing to sponsor this important service. More up to date information will always be on the Monta Loma website or reach out to the moderators at [mln-owner@lists.montaloma.org](mailto:mln-owner@lists.montaloma.org). If you are interested in being on the list please contact us.



“Crap, I hit reply all.”

Cartoon by Dave Ostow and Dan Salomon

# MIDDLE & HIGH SCHOOL

## MOUNTAIN VIEW CAMPUS

LEARN MORE & ENROLL:  
[WALDORFPENINSULA.ORG](http://WALDORFPENINSULA.ORG)

WALDORF SCHOOL OF THE PENINSULA

# Hobbledehoy

Montessori Preschool

Owner Operated since 1990

[www.hobbledehoy.org](http://www.hobbledehoy.org)

We offer FULL-TIME and PART-TIME programs for children ages 2-5 years old.

(650) 968-1155

2321 Jane Lane ★ Mountain View



## Traffic & Parking Resources

By John Canata, MLNA Traffic and Parking Liaison

The chatter bars have been re-installed at the intersection of Victory and Dell, making the left turn onto Victory from Dell a little safer for us, and Google/Rails X has repaved much of the area that we drive through.

A few contacts for your reference:

- Abandoned vehicle (more than 3 days): call (650) 903-6358.
- Police enforcement at a specific intersection: call (650) 903-6146.
- Other traffic concerns: [traffici liaison@montaloma.org](mailto:traffici liaison@montaloma.org).

## Palo Alto Gardens Relations

The list of Neighborhood Resources is growing. This year, Alan Whitaker, Alan on Alvin, accepted the position of liaison to Palo Alto Gardens, an apartment complex which shares access to the Monta Loma Neighborhood via open area at the north end of the 2500 block Alvin street. Alan has been talking with residents of Alvin Street as well as Palo Alto Gardens Management to try to make improvements to that end of the neighborhood, particularly in regards to parking and trash. Recently, a new trash receptacle was added to the small park as a result.

## CERT is Staying Ready for Action and is Open to New Members

By Tim Slattery, CERT Leader

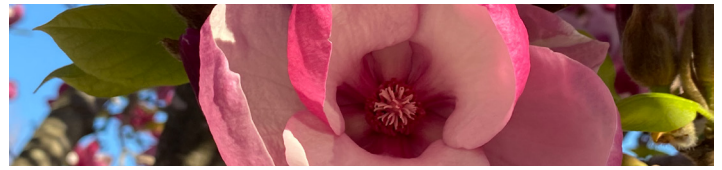
CERT continues to have meetings held by Zoom. We are adapting to the new rules, finding ways to maintain our equipment and overall readiness for the kind of emergencies we have trained for. Many of our members are also doing what we can to help our community.

At this time the City has suspended all CERT classes and all in-person meetings. Refresher classes have been canceled until the county health recommendations change.

Monta Loma CERT is always looking to welcome new members. It is not necessary to take the training before joining. At this time we would invite new members to our Zoom meetings and include them on the mailing list. If you would like to join us contact Tim Slattery at [CERT@montaloma.org](mailto:CERT@montaloma.org)

## Gear up for Spring in MLN!

Enjoy spring in Monta Loma by putting on your hat and heading out for a walk. Stock up on Monta Loma gear including mugs, hats, frisbees, and pens. See them at [montaloma.org/mln-logo-items](http://montaloma.org/mln-logo-items) and contact Tricia at [president@montaloma.org](mailto:president@montaloma.org) to buy. If a t-shirt is on your wish list, check out the offerings at [montaloma.org/monta-loma-tee-shirts-still-available](http://montaloma.org/monta-loma-tee-shirts-still-available), and contact Marilyn at [marilyn@gildea.com](mailto:marilyn@gildea.com) or 650-940-1606 to buy.



## Monta Loma School News: From the Principal

By Trisha Lee, Principal, Monta Loma Elementary School

Greetings, Monta Loma Community. I acknowledge how conflicted our community may be regarding perimeter controls around Monta Loma Elementary School and I would like to take this opportunity to express how much I am looking forward to coming to the table, to work together.

I have heard much on the topic in community forums such as MVWSD board meetings, as well as school committee meetings. I also acknowledge all the sweet lawn signs I see as I drive to and from school each day. However, in service of the staff I lead, I want to make sure their voice is also heard. At the February 4th Board of Trustees meeting, one of our teachers read a letter written by some staff members and I hope that you all take a moment to hear their voices as well. Below is a line from the letter but you can access the entire letter here: <https://tinyurl.com/MLperimeterletter>.

*"Dear Board of Trustees,  
This letter is written to you on behalf of the staff members at Monta Loma Elementary School, who have signed the letter below, with regard to the building of perimeter control fencing at Monta Loma. We surveyed the teachers, and found that nearly three quarters of our certificated staff members at Monta Loma feel that perimeter control fencing is necessary and needed."*

## School Opening Updates

On February 4th, Superintendent Rudolph made a recommendation to the MVWSD Board of Trustees to begin the phased return to learning on campus once Santa Clara County moves into the red tier and remains there for no less than 14 days. February 22nd



marks the beginning of our third trimester. This milestone means that our Monta Loma Leopards have been learning and growing from a distance for much of the school year. Beginning February 24th, MVWSD will begin seeing a small group of students on campus for in-person PE with our Rhythm and Moves PE Teacher thanks to the generous support of the Mountain View Education Foundation.

As a reminder and for the safety of our students and staff, our campus is closed to the public Monday through Friday during regular school business hours. Thank you for your understanding.

# HELPFUL HINTS FROM THE NEIGHBORHOOD

## Keeping Monta Loma Clean and Green

### Walkable Sidewalks:

- Please trim shrubs back to the full width of the sidewalk and to a height of seven feet, as req'd by city code.
- Keep sidewalks clear of debris, especially after rain, for the safety of pedestrians.
- Please keep weeds under control, especially those nasty foxtails that get into our pets' toes, ears, and noses. Sweep sidewalks after mowing weeds.

### Street sweeping:

- Help the sweeper clean your gutter by moving your vehicles and trash bins off the street the evening before the second and fourth Thursdays of each month. Cars should be moved by 6:00 a.m.
- The next street sweeping dates are: 3/25, 4/8, 4/22, 5/13 and 5/27.
- If you have tenants who park on the street, please keep them informed of dates as well.

### Dogs:

- Always pick up dog messes deposited at the Monta Loma Park fields. Dogs are not allowed on fields when school is in session.
- Pick up droppings from yards.
- Please don't deposit doggie bags in neighbors' trash cans after they've been emptied.
- Incontinent dogs should be walked in the gutter, not on sidewalks.

**What goes in which bin:** Visit [mvrecycle.org](http://mvrecycle.org)

### Repair Cafe:

- The Repair Café has successfully gone virtual. To learn about upcoming events, join its mailing list e-mail at [RepairCafeMV@gmail.com](mailto:RepairCafeMV@gmail.com).

**Moving out?** Go to [HHW.org](http://HHW.org) or call (408) 299-7300 for a list of household hazardous waste collection options. *Note: Hazardous waste drop-off is currently closed.*

**Moving in?** If you found unwanted household chemicals in your new house, visit or call HHW to find nearby household hazardous waste drop-off locations.

## For Your New Neighbors

Look for the "New to Monta Loma?" link under MLNA at [montaloma.org](http://montaloma.org), or share a copy of this newsletter with your new neighbors.

## Protecting your Cat(alytic Converter)

By Leane Reelfs, *The Car Gal at Helming's Automotive*

You hop in your car, turn the key, and it sounds like a hot rod. What happened?! Sounds like your catalytic converter (or cat) has been stolen. Thieves have been stealing cats because of the platinum, palladium and rhodium they contain, which can fetch \$100 each on the black market.



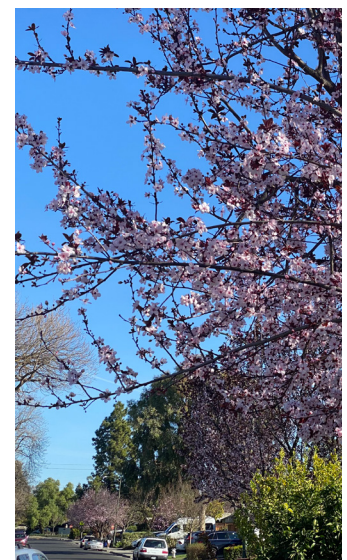
Biggest targets have been Priuses from 2006-2011, but we have seen Honda Element and early 2000 Toyota trucks targeted. If this happens to you, call the police and then call your insurance company, because the cost of replacement is nearly \$4000 and Honda Element cats aren't available because of a national back order.

What can you do to protect yourself? If you can't park in the garage, use motion sensors to scare off the thieves, but they are so fast, they just jack up one side and make two cuts on the exhaust and are done in 20 seconds. Cat Shield is a product available online and can be installed with rivets or special screws and impedes access to the converter. Dealerships are also stocking them. Your mechanic can install it in about an hour's time. Make sure to get the Cat Shield for your exact make and model. Another option is provided by a neighboring shop, Bay Muffler. Chris is a welder specializing in mufflers and exhaust work and designed his own type of cat shield, which several neighbors have had installed for around \$300.

If you are thinking about installing a Cat Shield, call your mechanic to see if your vehicle is at risk and if they can install a Cat Shield. Spending \$500 to protect your car is better than spending the \$500 deductible in a claim.

## Neighborhood Trees

Neighbor Kate Lorig remembers when the streets of Monta Loma were lined with flowering trees, one for each house. Some of these trees are still around, and blooming beautifully. If you would like a free tree from the city, they offer many varieties in honor of Arbor Day. The deadline to apply for a free tree is July 31. More information here: [tinyurl.com/freetreemv](http://tinyurl.com/freetreemv)





## Watching out for Seniors

By Dr. Elna Tynes, Cognitas Health, MLN Resident

Everybody is getting impatient about the lockdowns, but some in our neighborhood are seniors for whom isolation can cause health problems. Clinical studies have demonstrated that isolation of seniors tends to cause depression and anxiety, and those factors are associated with increasing levels of heart and circulatory problems.

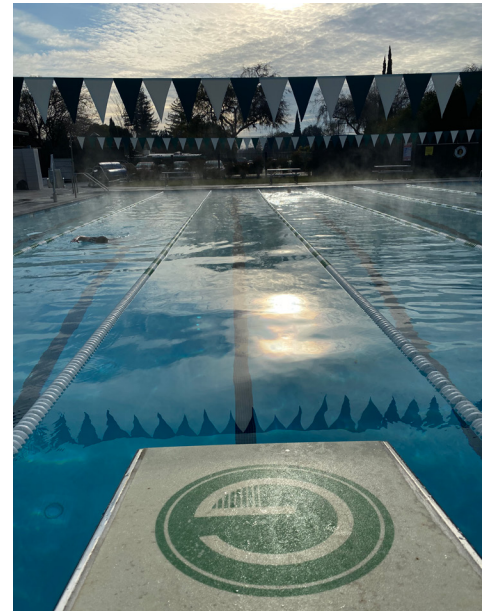
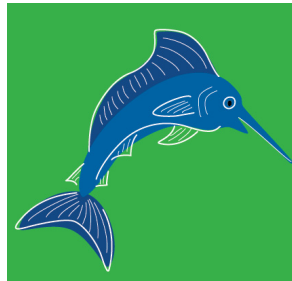
With that in mind, we should be mindful of our neighbors who are elderly and live alone. You can be aware of whether their car has moved from day to day, or their mail hasn't been picked up, or if you haven't seen them for a couple of days. Knock on their door just to check on them, engage in some friendly conversation for a bit, maybe bring them some banana bread or some flowers, or invite them over for a cup of coffee or tea (served with you 6 ft. apart), or just bring them any newspapers in their driveway. Doing so will also let you quickly see if they need help with anything. You may need to explain that you're there to help if they need anything. Do this a couple of times a week and most seniors will appreciate the gesture, and remind them that neighbors care about them.

## Swim at Greenmeadow Pool

Just across San Antonio Road from Monta Loma Neighborhood, is the Greenmeadow neighborhood with a hidden gem of a community pool right in the middle. Within easy biking distance of Monta Loma, many neighbors are members of the pool and enjoy the relaxing atmosphere.

Membership sign-ups are open for 2021, with the first day of pool use for new members starting on April 1.

The pool has excellent COVID-safe protocols in place and is open to individuals and families seven days a week. They also offer swim lessons and swim team. Learn more and sign up at [greenmeadow.org/Join](https://greenmeadow.org/Join).



Successfully serving  
Monta Loma for  
more than 20 years

*How can I help you?*

**Nancy Adele Stuhr**

Mountain View Neighborhood Specialist



**650.575.8300**

nstuhr@sereno.com  
www.nancystuhr.com  
CalDRE# 00963170

**sereno**

sereno  
**1% For Good**  
CHARITABLE FOUNDATION



# NEIGHBORHOOD FOODIES

## NYT Whole Grain Granola Adapted with MLN Flair

(Recipe adapted from *New York Times*, by Tricia DelGaudio and Heather Schoell)

2½ cups (45g) puffed kamut (or use other puffed whole grains, such as barley or wheat)

2 cups (170g) rolled oats (or use rolled barley, spelt, triticale, or rye)

1½ cups raw (untoasted) nuts, such as sliced almonds (230g almonds), walnuts or pecans, or a combination

1 cup (80g) unsweetened coconut chips or shredded coconut

1 cup (150g) raw pepitas (pumpkin seeds)

½ cup (90g) buckwheat groats

2/3 cup (225g) honey

½ cup (100g) extra-virgin olive oil

1/3 cup (50g) dark brown sugar

1½ teaspoons (6g) kosher salt

### Directions

Heat oven to 300 degrees. Mix all ingredients together and spread out on two baking sheets lined with parchment paper.

Bake until golden brown all over, about 35 to 50 minutes. Stir the granola as it bakes at least 2 or 3 times, making sure to stir around the edges. Cool completely before storing airtight.

### Notes

From Tricia: I add ground cardamom or cinnamon to change it up. I've also used coconut oil instead of olive oil. We add dried fruit sometimes too.

From Heather: I love to use local honey and I top with local fruits from Monta Loma trees. It goes great with citrus, persimmons, and stone fruits.



Granola topped with Monta Loma harvested persimmons and pomegranates

## Dumpling City Restaurant Review

By Debbie Cunningham

For the more adventurous, I love Dumpling City! You order frozen dumplings and have them delivered by DoorDash. You can use a bamboo steamer but don't need to. If you can steam veggies you can steam dim sum. The pork potstickers are our favorite, second are the soup dumplings, the shrimp/chives dumplings lacked flavor.



A generous neighbor has taken a page from the Little Free Library book and started a Little Free Pantry on Whitney Drive at the intersection of Anna. As the sign on the door says, "The purpose is to help those who are genuinely in need."

Photo by Baidra Murphy

## Goodbye to Milk Pail Drive Through (Again)

By Heather Schoell

A month into quarantine, a welcome surprise popped up: Milk Pail was opening again, this time as a drive through at their warehouse where you could order grocery bundles in advance. We enjoyed their classic cheese offerings, their bake-at-home croissants, their raviolis, and other special treats. But sadly, after 10 months of its reinvented model, Kai Rasmussen, the daughter of the original owner, has decided to close again, and focus on her life after graduating from UC Berkeley.

In the meantime, we have found that Ava's Market in Mountain View has a suitable replacement for the croissants, Piazza's has the raviolis, but nobody has the deals on cheese like Milk Pail. They will be missed.





# MONTA LOMA FUN & GAMES

## Live Music from the Front Yard on Mardell

By Heather Schoell

**Weekends when it's nice out** – Go for a stroll past 2553 Mardell on a nice weekend afternoon, typically Sundays 2:30-5:30 p.m., and there's a good chance you'll come across the Mardell Way Music Gang playing some recognizable tunes. Victor invites you to come by, bring a lawn chair, find a socially-distanced-appropriate spot to enjoy the music, and have a good time! And they even take requests.

You can contact Victor to be on their mailing list if you'd like a head's up on when they'll be playing. victor@victorland.com



**Kids of all ages!**  
Submit your art, jokes, or games  
to [newsletter@montaloma.org](mailto:newsletter@montaloma.org)

## Neighborhood Word Search

By Bryce and Michael DelGaudio

A C A L I F O R N I A P O P P Y A  
 B L I B A L V I N A P A R A K E B  
 L E M O N S Z T E H E A L L I D A  
 B O B R B G C I G E R M A M C A T  
 U S P A S O C O G M L E D T I E S  
 T T H N E H B E P A L M T R E E T  
 O N C G L O N E A R T I D E L L D  
 I N T E H E B P A D L M T E T I S  
 H E R S N R Y C A E L I F O R U B  
 E I C H M O N T A L O M A M E A R  
 M A B A S E B A L L C K Z D A A Y  
 O R A N G E E Z A N D A D P P P L  
 T Z H A D D D E U S S A P A L N M  
 T R R E E H U G S N H O T D R K E  
 M A C K A Y M O L T P A A R K E R

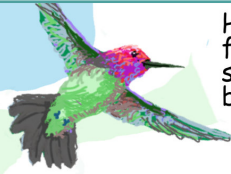
*M o n t a L o m a  
w o r d s e a r c h*

- Mardell
- Lida
- Parker
- Dell
- Alvin
- Thaddeus
- Monta Loma
- Baseball
- Palm tree
- California poppy
- Eichler
- Mackay
- Oranges
- Lemons

# AROUND THE BLOCK

## Salmonella Risk to Birds

Please remove bird feeders and water baths until June!



Hummingbird feeders should also be removed.

We all love providing for our feathered neighbors, but for now, the feeders and baths are making birds sick!

Salmonella spreads through fecal/food contamination. Wherever birds are exposed to other birds' feces, they can contract salmonella and die of infection.

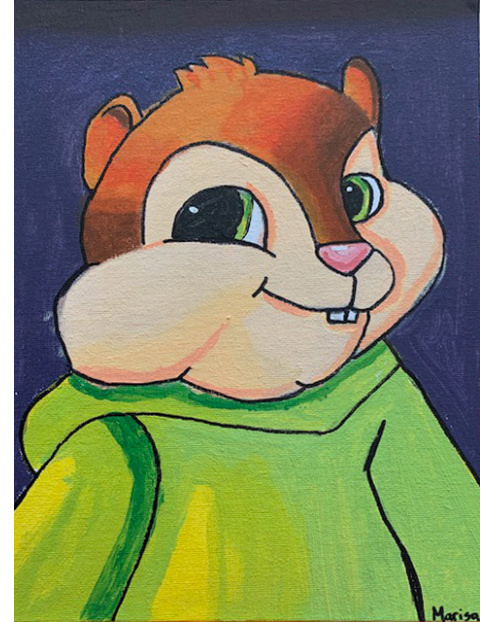


Our natural habitats provide ample food and water; removing the feeders will not deprive birds of needed nutrients. The birds will seek out natural food sources rather than overcrowding feeders and bird baths.

Pine Siskins are especially affected. These flocks of migratory finches travel through our neighborhoods in winter and early spring.

@annmcmillanart

Sources: allaboutbirds.org, "Buzzkill for Bird Feeders", KQED.com, Feb.12, 2021.



Theodore by Marisa, Age 11

## SHELLY POTVIN & MICHAEL SUTTON YOUR MONTA LOMA TEAM



### PLEASE REMEMBER WE ARE ALWAYS HERE FOR ALL OF YOUR REAL ESTATE NEEDS.

We have a variety of tried & true tradespeople, for example:

- Electrician
- Hardwood floor refinishing
- Painting
- Many more...

Curious as to the current value of your home?

- Refinance/Lender Referrals
- BBQ tips (Michael is a Pitmaster for a cook-off team)
- We are here to sell your home for the highest possible price while following COVID guidelines.

### CONSIDERING SELLING IN SPRING 2021?

Now is the time to meet with us (in-person or Virtually) to get that plan in order.



**SHELLY POTVIN**  
(650) 303-7501  
shelly@serenogroup.com  
ShellyPotvin.com  
DRE # 01236885



**MICHAEL SUTTON**  
(650) 799-2253  
sutton@serenogroup.com  
MichaelSuttonRealtor.com  
DRE # 01916467





# The Diablo Sundial

By Jeff Kaiser

“Is it an alien landing pad?” I’ll let you know after they arrive. I hope they’re friendly.

“It looks like a compass.” Yes, it has all the directions, but it’s more than that.

“Is it a clock? Where are the hands?” You make that part of the clock.

These are some of the questions I received from neighbors passing by while I was out on my driveway painting my blue and yellow, 16-foot-wide sundial. That’s not exactly something people expect on a driveway, so it’s a great conversation starter. Come on by and see if your smartphone is correct.

I have painted what is known as an analemmic sundial. You stand on a line at a place corresponding to today’s date, and your shadow will fall on the dial’s rim to show current solar time. The dial is sized so that a person 4 feet tall (or 3 feet tall with hands raised) should have no problem reading the time on a sunny day, any day of the year, although early morning and late afternoon house and tree shadows block the sun at this location. To make the dial more fun, I’ve added points that allow you to see when and where sunrise and sunset occur through the year, and directional markers pointing to historical solar and celestial observatories around the world, many of them thousands of years old. They include ones such

as Stonehenge, which you’ve heard of, and Jantar Mantar, which maybe you haven’t. Instructions and explanations for these features would clutter the dial face, so I’ve supplied a QR code at the dial. If you read it with your smartphone camera a link will take you to a website with detailed explanations and links to some information on these ancient observatories.

My wife, Anne, and I moved into Monta Loma about 20 years ago and have always enjoyed the mix of families at different stages of life in the neighborhood. I became interested in sundials about 10 years ago. About 6 years ago I made a chalk version of the current one to amuse the kids on our street, but mostly it amused me. With more time at home this past year, it seemed a fine opportunity for making a more lasting version, without going over-the-top on bronze markers and medallions set into the concrete (especially after I priced that out!) After securing my wife’s indulgence (and color scheme approval) I dove into the job, meeting the deadline set by the winter rains. Paying homage to the forces giving us the quirky variation of time we have over the year and the shadows utilized by the sundial, I christened my website for the sundial [www.unifyingthegravitationalandelectromagnetic-forces.com](http://www.unifyingthegravitationalandelectromagnetic-forces.com), although getting there using the QR code at the dial is less prone to typing errors. You can send me a message regarding the sundial from the website.





**Dove Dental Smiles**  
Family & Cosmetic Dentistry

**New Patients Welcome**  
**Friendly Exceptional Service**

**Shirley Irudayaraj DDS**  
877 W Fremont Ave Suite L1  
Sunnyvale, CA 94087

**Call 408 498 0244**

[www.dovedentalsmiles.com](http://www.dovedentalsmiles.com)

**THE  
TROYER  
GROUP**



**YOUR  
MONTA LOMA  
HOME IS  
WHERE OUR  
HEART IS.**

If you're thinking of selling, consider this window of 2021.  
David is ready to help you with all of your real estate needs!

**DAVID TROYER**  
DAVID@DAVIDTROYER.COM  
650.440.5076  
DAVIDTROYER.COM  
LIC#01234450

**INTERO**  
A Broker/Realtor Affiliates

**BAIDRA MURPHY**, Managing Broker  
**PROUD MONTA LOMA RESIDENT**  
650.383.7201  
BAIDRA@DAVIDTROYER.COM  
LIC#01216142

**Pacific Ballet Academy**

Ballet Instruction for Children & Adults  
Online & Studio classes for all

[pacificballet.org](http://pacificballet.org) [director@pacificballet.org](mailto:director@pacificballet.org) 650-969-4614  
295 Polaris Ave, Mountain View

**ENROLL TODAY!!**

## *Serving Monta Loma for More than 40 Years*

*If you are thinking of selling your home,  
CALL ME for a detailed analysis of your home*

### *Monta Loma Specialist*

*The market remains strong despite Covid restrictions.  
I can sell your home safely. CALL FOR DETAILS.*

*Visit my blog at [www.Lmercerc.com](http://www.Lmercerc.com)  
for market updates and home improvement ideas.*



**Lynne Mercer**  
650.906.0162 • [Lmercerc@Compass.com](mailto:Lmercerc@Compass.com)  
DRE# 00796211

**COMPASS**