

MONTA LOMA NEIGHBORHOOD NEWS

MONTA LOMA HOLIDAYS

Gratitude chalk walk, food donations, Ernie's trains, and a scavenger hunt all planned to keep our spirits high.

See inside for more details on holiday events for a festive season in the neighborhood.

Fencing Monta Loma Park: A Work in Progress as Neighbors, School, City Seek Solutions

By Heather Schoell, Editor

In mid-September, the neighborhood became aware of a plan by the Mountain View Whisman School District to use Measure T funds to fence off Monta Loma park from the public during school hours (7:30 am - 3:30 p.m.).

The reasons for the fence as presented by the school district are to prevent unauthorized visitors from entering the school, allow for monitored entrances to comply with COVID guidelines when school re-opens, keep pets and non-school affiliated visitors off fields during school hours, and keep children prone to wandering in a safe and contained area during outdoor school activities.

Two plans for the fencing are under consideration, both are a combination of chain-link fence and decorative fencing, 6' high. Plan 1 connects existing fences and adds more along the walkway past the rest rooms and connecting to the front of the school. This plan allows for public access to the city-installed playground, picnic tables, and rest rooms during school hours. Plan 2 closes the entire park during school hours. This second plan eliminates the fence from interfering with broader uses of the park, but cuts off community pass-through during school hours. All gates are to have remote, timed, auto-lock and unlock functionality so they will open at the appropriate hours.

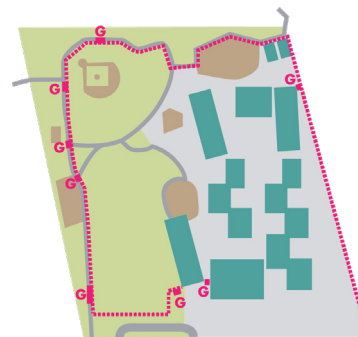


Fence Plan 2 rendering. Source: MVWSD

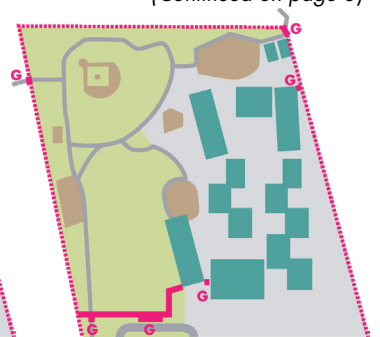
The response from the neighborhood has been mostly opposed to the plans yet understanding of the district's desires to keep the children and teachers safe and allow for a school re-opening.

As soon as the MLNA board became aware of the plans in September, Tricia DelGaudio, MLNA Board President, initiated communications with Dr. Rebecca Westover, MVWSD Chief Business Officer who is in charge of the fencing project, as well as other city and school board leaders, to ensure that the neighborhood had a role in the process. Neighbors have voiced their concerns at a number of meetings over the past few months; school board, city council, and parks and recreation.

(Continued on page 3)



Fence Plan 1 (along walkways)



Fence Plan 2 (gates at entrances)

IN THIS EDITION:

Holiday Activities

School Park Fencing Contact Info

Halloween Gallery

Joke Corner and Children's Gallery

p. 2

p. 3

p. 5

p. 9

HOLIDAY SEASON IN MONTA LOMA

MLNA Board Members

Phone messages: (650) 691-5258

President

Tricia DelGaudio
president@montaloma.org

First Vice President

Chris Williams
vp1@montaloma.org

Second Vice President

Nirvana Nwikidu
vp2@montaloma.org

Treasurer

Andre Valente
treasurer@montaloma.org

Secretary

Baidra Murphy
secretary@montaloma.org

Newsletter Editor

Heather Schoell
newsletter@montaloma.org

Member-at-Large

Marilyn Gildea (communications)
member-at-large@montaloma.org

MLNA Newsletter

Editor & Layout

Heather Schoell
newsletter@montaloma.org

Advertising Manager

Baidra Murphy
ads@montaloma.org

Illustrations/Photos

If interested in contributing, please e-mail the editor for content ideas. Submissions for relevant cartoons also welcome.

© 2020 by the Monta Loma Neighborhood Association. All rights, including electronic posting and distribution, reserved. Individual article rights revert to the authors, and permission must be obtained from them to re-use their articles in any way.

Gratitude Chalk Walk in Monta Loma Park

Friday, November 27, 10 a.m.-3 p.m. – Take a walk to the park and express in chalk on the walkways what you're grateful for in this challenging year. We've seen so much beautiful sidewalk art that we'd like to bring some of that joy into our shared space in the middle of the neighborhood. Chalk will be available for all to use. We will be following the 6' social distance guideline and all are asked to wear masks while participating in the activity.

We're looking for volunteers to be "greeters" throughout the day. [Sign up for a time slot \(tinyurl.com/ML-ChalkWalk\)](https://tinyurl.com/ML-ChalkWalk) to say hi to neighbors and help them find some chalk and a spot to share their words or pictures. All ages are welcome! (Rain cancels.)

Second Harvest Holiday Fundraiser, the Tradition Continues

Every year during the holidays, the Monta Loma Neighborhood Association raises funds for the Second Harvest Food Bank. Any amount is welcome and your generosity much appreciated. Each dollar donated provides enough for two meals. Please check whether your company offers matching donations.

This fundraiser will be open until December 20th.

Link for online donations: impact.shfb.org/team/328691

Ernie's Trains, an Annual Favorite, Keeps Chugging

John Bianco, Ernie's son, will continue the tradition of running his model trains from Thanksgiving through Christmas Day. Weather permitting, trains will run Wednesday through Sunday on Adele Ave. from 6:30 to about 9:00.

Due to COVID-19 restrictions, trains will run on the indoor tracks only. The engines and cars change daily. Generations of families have visited the train display and John looks forward to continuing the experience this year.

Ernie also began the Christmas Eve tradition of curbside luminaria (candles in paper bags). Over the years, neighbors added their own, so a row of the softly glowing lights lines Adele.

*Our family loves the holiday trains and walked to them several nights a week last year. We also love walking around the neighborhood and admiring the neighbors' lights and decorations.
– Christen on Craig Ct.*

Holiday Scavenger Hunt, Holiday Fun for All

Karla Valente is planning a neighborhood scavenger hunt for local kids to enjoy. All you need is a stuffed animal with some festive attire. The Holiday Scavenger Hunt will take place between December 10th and 25th.

Neighbors will try to find everything by walking through the neighborhood. They will write down the home number of each clue that they find. On December 27th Karla will send participants an email with the number of items they should have seen. This activity gets us outside and gives us something to do other than staring at a screen all day. To participate, send an email to klvalente@yahoo.com.

And lastly, let's decorate our homes so we can share the joy as we walk around. If you have decorations you do not use, consider offering them to a neighbor. Let's make the end of 2020 colorful and cheerful to bring good energy for 2021.

Neighbors React to School Board Plan to Fence ML Park

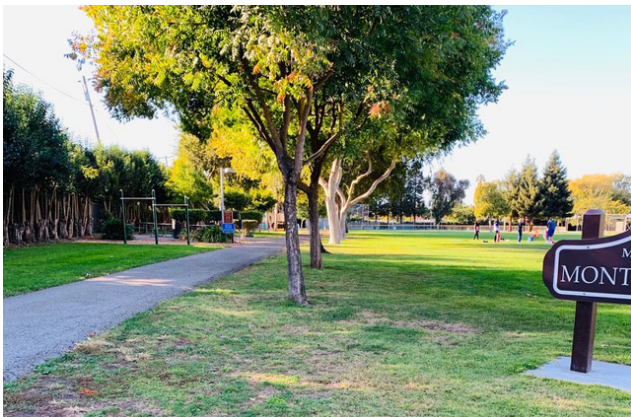
(From page 1) Some neighbors have joined an [email discussion group](#) to coordinate plans to attend meetings and share responses to letters. A group of Laura Ln. neighbors have been also active in reaching out to city and school board leadership in an effort to keep the conversation open and not allow the school board to move too quickly without evaluating the needs and perspectives of all community stakeholders.

In addition to working with the school board, many neighbors are also pressuring the City of Mountain View to convert more space north of Central Expressway into park space to make up for lost park space if Monta Loma Park is fully fenced. At press time, the plans were still in the works, with no specific next steps to share. When asked for comment, the following was received: From Rebecca Westover, Chief Business Officer, MVWSD:

The District will be holding work group sessions with the community and will announce the specifics in the coming weeks.

From Alison Hicks, MV City Council Member:

I am very concerned about the threat to green space and park access in our city and the Monta Loma area in particular. I believe that urban open space plays a critical role in building health, well being and community and that every Mountain View neighborhood deserves ample green space. California law recognizes that right through the Quimby Act which states cities must provide three acres of parkland for every thousand residents. I think our city needs to follow that law in both fact and spirit by making sure our parkland is accessible and distributed throughout our neighborhoods. I also think our parkland needs to go beyond ball fields and playgrounds, important as those features are. Our parks must include features that meet the needs of people of all ages and abilities, including walking and running paths, shaded and attractive picnic areas, dog walking areas and more. I encourage residents to [contact me](#) with concerns regarding parkland, green space and access.



Current entrance to Monta Loma Park from Thomson, which would be fenced in according to current plans under discussion. Adding fencing around the park will change the fabric of the neighborhood.

Photo: Jim Cochran

Speak Up Now! Share Your Thoughts on the Fence Plans

Read more about the plans from the school district:

www.mvwsd.org/district_business/facilities/school_construction/monta_loma_elementary_construction

Contacts

Rebecca Westover, Project leader for School Dist.: rwestover@mvwsd.org

Ayindé Rudolph, Superintendent: arudolph@mvwsd.org

MVWSD Board: trustees@mvwsd.org

Mountain View City Council: city.council@mountainview.gov

Mountain View Parks & Rec: prc@mountainview.gov

Email discussion group: groups.google.com/g/fencing-monta-loma

Neighborhood Resources

Community Emergency Response Team (CERT)

Tim Slattery, (650) 964-6389
CERT@montaloma.org

Neighborhood Watch Coordinator

Tom Purcell, (650) 224-5110
MontaLomaNBC@gmail.com

Traffic/Parking Liaison

John Canata, (650) 269-5646
traffici liaison@montaloma.org

MLN Neighborhood E-mail List

To subscribe, send a message with subject 'help' to mln-request@lists.montaloma.org
Contact moderator:
mln-owner@lists.montaloma.org

MLNA Websites

www.montaloma.org
Referrals: localwiki.org/montaloma
Webmaster: Hien Do
webmaster@montaloma.org



Thanks to those who delivered the last newsletter: Susan Jee, Silke Gurlich, Dave McCleary, Vania Mendonca, John Thomas, Harry Gordon, Raymond White, John Canata, Maria Harnoto, Dianne McCleary, Dave Erskine, Paul Kostka, Ivy Lu, Shelly Ostman, Chuck and Cookie Henderson, Herb and Victoria Perry, Martha Elderon, Grant & Birgit Grundler, Isabella Hill, Leane Reelfs

We welcome more volunteers, even those who can help only occasionally. It's a good way to get to know your neighborhood and get an hour's exercise. Contact the editor to learn more.

Prevent Holiday Thefts

By Tom Purcell, Monta Loma Neighborhood Watch Captain

With the holidays approaching, we can expect a spike in package thefts. Take steps to avoid having deliveries loiter unattended on your doorstep. If you can, have packages delivered to your work, or utilize delivery lockers that some retailers offer. Many package deliveries offer detailed tracking information and delivery preference options so that you can make sure you or a trusted neighbor can secure a package soon after it's delivered.

For a tip sheet on preventing package theft as well as other helpful safety tips, visit the [Neighborhood Watch page](#) on [montaloma.org](#).

Take care to avoid leaving signs that you're not home, such as empty trash bins at the curb. If you leave before your bins are emptied, ask a neighbor to roll them off the street. If you have home security cameras, include in the coverage area where you expect packages to be left.

Thefts from vehicles continue, so avoid leaving valuables in yours, and always lock it. The police urge you to call whenever you see anything that seems suspicious. For emergencies and in-progress incidents, call 911. For other matters, suspicious circumstances, or crimes that have already occurred, call the non-emergency number (650) 903-6395.

Annual Financial Report

By Andre Valente, MLNA Treasurer

Despite the pandemic and not being able to hold our signature Ice Cream Social and as many neighborhood block parties, we have had a good year. We invested more in our newsletter, now in color and with a much improved layout.

Below is a condensed financial statement for the 2019-2020 fiscal year, audited by the Board. Feel free to contact me if you need more detail. Please patronize our newsletter advertisers; they provide significant financial support to the association.

Beginning balance (7/1/2019)	\$6,587.77	
	Withdrawals	Deposits
City Grant	\$0.00	\$2,000.00
Ice Cream Social	\$241.83	\$0.00
Block Parties	\$679.36	\$0.00
CERT	\$40.00	\$0.00
Newsletter	\$2,415.23	\$3,703.43
T-shirts	\$0.00	\$0.00
Fees	\$20.00	\$0.00
Internet Hosting	\$190.80	\$0.00
Branded logo items	\$377.52	\$507.00
Supplies	\$122.50	\$0.00
Total	\$4,267.24	\$6,210.43
Ending balance (6/30/2020)	\$8,530.96	



**Learn with Joy.
Grow with Empathy.
Explore with Confidence.**

*Discover how a bilingual education
can forever impact your child.*

We welcome you to visit us!

**Yew Chung International School
of Silicon Valley**

Preschool to Grade 8

www.ycis-sv.com

650 903 0986

admissions@sv.ycef.com



NURSERY SCHOOL - HIGH SCHOOL

**AN EXCEPTIONAL EDUCATION
FOR A MEANINGFUL LIFE**

WALDORFPENINSULA.ORG



**WALDORF
SCHOOL OF THE
PENINSULA**

CERT is Staying Ready for Action and is Open to New Members

By Tim Slattery, CERT Leader

CERT continues to have meetings held by Zoom, but Covid health concerns restrict most of our activities. We are adapting to the new rules, finding ways to maintain our equipment and overall readiness for the kind of emergencies we have trained for. Many of our members are helping in other ways outside the CERT organization, and doing what we can to help our community.

At this time the City has suspended all CERT classes and all in-person meetings for 2020. Refresher classes have been canceled until the county health recommendations change.

Monta Loma CERT is always looking to welcome new members. It is not necessary to take the training before joining. At this time we would invite new members to our Zoom meetings and include them on the mailing list. If you would like to join us contact Tim Slattery at CERT@montaloma.org

Produce Donations Welcome All Year

Do you have extra produce growing in your yard that you would like to donate to families in need? Each week on Sunday mornings, Monta Loma resident Caroline Chan delivers extra produce from our neighborhood to the school district she works for as part of an ongoing effort to help families struggling with food insecurity. If you have any excess produce that you would like to donate, please drop off what you have in the shade in front of Caroline's garage (2531 Mardell Way) by 10 a.m. on Sundays. Non-perishable food as well as toiletries are also welcome. This is an ongoing effort, so if you don't have any extra produce, non-perishables or toiletries to donate on a given week, you can always donate in the future!



Photos: Caroline Chan

Traffic & Parking Resources

By John Canata, MLNA Traffic and Parking Liaison

The chatter bars have been re installed at the intersection of Victory and Dell, making the left turn onto Victory from Dell a little safer for us. A few contacts for your reference:

- Abandoned vehicle (more than 3 days): call (650) 903-6358.
- Police enforcement at a specific intersection: call (650) 903-6146.
- Other traffic related concerns: e-mail traffici liaison@montaloma.org

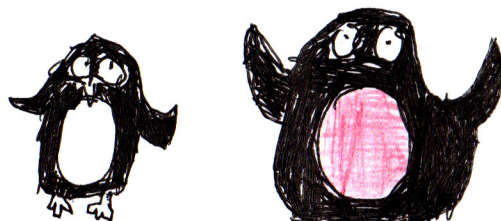
Google X (RAILS) Relations

If residents have questions or concerns they can e-mail John Canata at the traffic liaison e-mail address above, and he will be happy to forward those concerns to our Google representative(s). The Google Reps are more than happy to answer any questions or concerns the neighborhood might have and in turn, John will let the neighborhood know any correspondence that he receives directly from Google X Rails.

Monta Loma School News: From the Principal

Greetings, Monta Loma Community! I am the new Monta Loma Elementary School principal, Trisha Lee. While I am new to the Monta Loma neighborhood, I am not new to the Mountain View community, having been born and raised close to Mountain View High School. At Monta Loma, we continue to serve our students through distance learning, focusing on building up their abilities to persevere and weather adversity through social-emotional learning. As a district, we continue to monitor the health of our community, watching patterns and trends and make plans to move into Stage 3. The one consistent of 2020 has been to expect the unexpected and to be ready for change. As our school year progresses, community members can learn about our plans for bringing students back to campus on our [district website](#). As we weather this storm together, I invite community members to connect with me at lee@mvwsd.org or by calling me at 650-903-6915.

In community,
Trisha Lee
Principal, Monta Loma Elementary School



Penguins by Liliana, age 7

HELPFUL HINTS FROM THE NEIGHBORHOOD

Keeping Monta Loma Clean and Green

Street sweeping:

- Help the sweeper clean your gutter by moving your vehicles and trash bins off the street the evening before the second and fourth Thursdays of each month. This is especially important in fall with dropping tree debris.
- Cars should be moved by 6:00 a.m.
- **The only street-sweeping date in the remainder of the year is 12/10.** The regular schedule resumes in January.
- If you have tenants who park on the street, please keep them informed of dates as well.

Walkable Sidewalks:

- Please trim shrubs back to the full width of the sidewalk and to a height of seven feet, as req'd by city code.
- Keep sidewalks clear of fallen leaves, especially after rain, for the safety of pedestrians.
- Please keep weeds under control, especially those nasty foxtails that get into our pets' toes, ears, and noses. Sweep sidewalks after mowing weeds.

Dogs:

- Always pick up dog messes deposited at the Monta Loma Park fields. Dogs will not be allowed on fields when school is back in session.
- Pick up droppings from yards.
- Please don't deposit doggie bags in neighbors' trash cans after they've been emptied.
- Incontinent dogs should be walked in the gutter, not on sidewalks.

What goes in which bin: Visit mvrecycle.org

Repair Cafe:

- The Repair Café has successfully gone virtual. To learn about upcoming events, join its mailing list e-mail at RepairCafeMV@gmail.com.

Moving out? Go to HHW.org or call (408) 299-7300 for a list of household hazardous waste collection options. *Note: Hazardous waste drop-off is currently closed.*

Moving in? If you found unwanted household chemicals in your new house, visit or call HHW to find nearby household hazardous waste drop-off locations.

For Your New Neighbors

Look for the "New to Monta Loma?" link under MLNA at montaloma.org, or share a copy of this newsletter with your new neighbors.

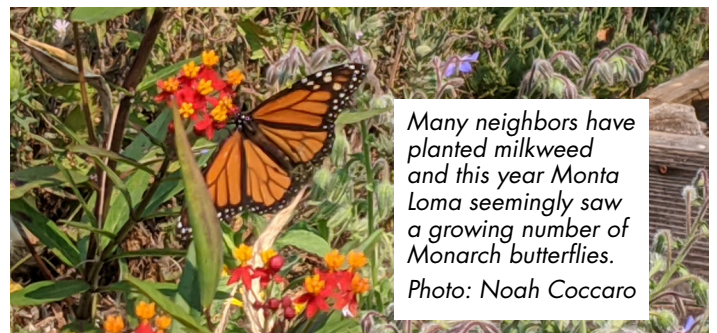
Greetings from the Car Gal!

By Leane Reelfs, The Car Gal at Helming's Automotive

As we head into the cooler, wetter months, there are a few things to put on your to-do list to get your car ready for whatever comes our way:

- Check your wipers - if they are hard and cracked after baking in the summer sun, it's time to replace them.
- Check your battery - if it's over three years old, it's probably time to replace, but have your mechanic perform a load test.
- Check your tires - your tires have "wear bars" between the tread interspersed along the tire. If the wear bar is even with the tread, it's time for new tires. And if you use your tires more than brakes on those winding roads (we know you, Speedracer!), they probably have less tread on the edges, so see if your mechanic recommends tires.
- Check your cabin air filter - this is sometimes difficult and you have to remove the glove box to access it, but we had a LOT of smoke this summer, so check to see if it's dirty vs. pristine and white. It could also be full of leaves and pollen and ready to be changed.

If you have any questions, feel free to email me at helmingsauto@comcast.net. Have fun and be safe!



Many neighbors have planted milkweed and this year Monta Loma seemingly saw a growing number of Monarch butterflies.

Photo: Noah Coccoaro



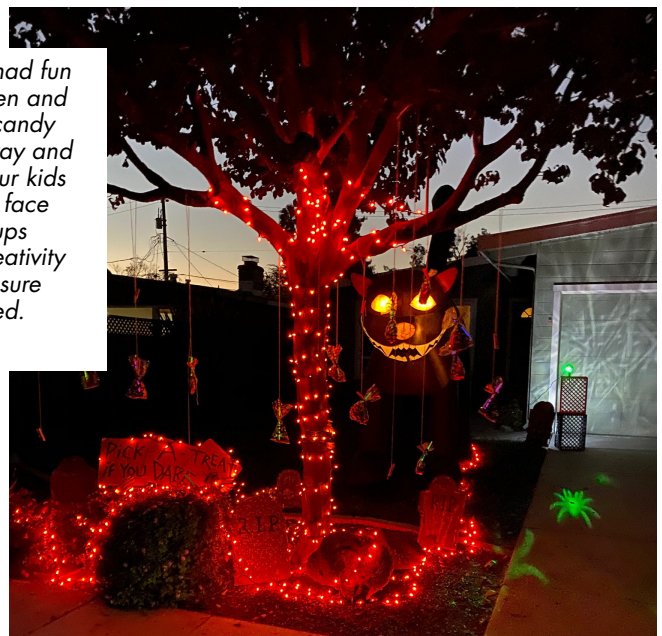
Along with these lovely gum tree leaves, Marilyn Gildea says her favorite thing about fall in Monta Loma is, "the Chinese Pistache trees turning color (actually, all different colors) in November. The ones on Jane Lane near Fay Way are outstanding."

Photo: Jo Chun-Wood

HALLOWEEN GALLERY

Haunted and Happy, Monta Lomans Celebrated Halloween in Pandemic Style

While it wasn't your typical Halloween, the current precautions didn't stop the neighborhood from enjoying themselves this Halloween. From candy chutes to mask wearing goblins, the candy, creativity and cheer was abundant.



On Hamilton Ave., we had fun decorating for Halloween and setting up a table with candy at the end of the driveway and waving to customers. Our kids trick or treated wearing face masks and in small groups and appreciated the creativity of neighbors in making sure Halloween still happened.
-Erin Brownfield



NEIGHBORHOOD FOODIES

Instant Pot Tomato Soup

(Recipe From [PressureCookRecipes.com](https://www.pressurecookrecipes.com),
shared by Jo Chun-Wood)

3 pounds (1396g) field or Roma tomatoes, cut in half horizontally
3 cups (750ml) unsalted chicken stock
3 (11g) garlic cloves, finely chopped
1 (248g) medium onion, chopped
1 (102g) carrot, chopped
½ cup (125ml) heavy cream
2 tablespoons (30ml) olive oil
1 tablespoon (14g) unsalted butter
2 tablespoons (30ml) fish sauce
2 tablespoons (30g) jasmine rice

A pinch of dried basil
A pinch of dried thyme
Salt, sugar & ground black pepper
Garnish: Fresh basil



Roast Tomatoes

Preheat oven to 400°F. Layer tomatoes (cut side up) in a baking tray. Drizzle with olive oil and season with salt & ground black pepper. *If your tomatoes are not in season, sprinkle a little sugar on the tomatoes to help them caramelize better.* Place baking tray in the oven's middle rack. Depending on your oven and tomatoes, it will take 45–65 minutes.

Prepare Pressure Cooker

Heat up your pressure cooker over medium high heat. Instant Pot: press Sauté button, then Adjust button to Sauté More function. Ensure your pot is as hot as it can be. Instant Pot: wait until indicator says HOT.

Sauté Onion, Garlic, and Carrot

Sauté onions in 1 tbsp unsalted butter for roughly 2 – 3 minutes until soft. Add in garlic and season with a pinch of salt and ground black pepper. Sauté for 1 minute until fragrant. Add in chopped carrots and saute another minute.

Deglaze

Pour ~½ cup unsalted chicken stock. Scrub all the brown bits off bottom of the pot with a wooden spoon. Keep the brown bits as they are very flavorful.

Cook Tomato Soup

Add roasted/browned tomatoes, 2 tbsp (30g) jasmine rice, a pinch of dried basil, and a pinch of dried thyme in Instant Pot. Pour in 2 tbsp (30ml) fish sauce and remaining unsalted chicken stock. Close the lid and cook.

Pressure Cooking Method: High Pressure for 3 minutes, then turn off the heat and do a 10 minutes Natural Release. Open the lid carefully.

Blend & Season

Blend tomato soup into desired consistency with an immersion hand blender. Strain the tomato soup over a fine mesh strainer for maximum smoothness.

Add ½ cup (125ml) heavy cream. Taste the soup and season with salt if necessary. Depending on the tomatoes, you may want to add a pinch (or a few pinches) of sugar to balance the acidity flavor. It does wonder to the flavor!

Serve

Garnish with fresh basil. Enjoy immediately!!

Ay Carumba! La Bamba is Moving!

By Heather Schoell

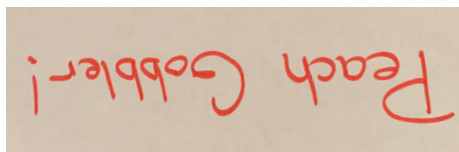
Sadly, the days of sitting on the patio eating tacos and watching kids bounce in the bounce house at our local taqueria, La Bamba, are at an end. In talking with the manager, he said that the rent was just too high to be sustainable, but the family wants to keep the business running. The restaurant is relocating at the beginning of December to a food truck arrangement in the parking lot of O'Malley's Sports Pub on Old Middlefield near Rengstorff. Still within walking distance from Monta Loma, the food offerings will remain, and La Bamba promises to have outdoor seating set up in the parking lot. Only the bounce house remains deflated.



Uni-taco by Vivienne, age 6

Kids of all ages!

Submit your art, jokes, or games
to newsletter@montaloma.org



Answer

WE LOVE MONTA LOMA KIDS!



Joke corner by the Phillips Kids
(answer on page 8)



Bird by Leila, Age 10



Bluebird by Isobel, Age 6



Pumpkin by Bryce, age 5



Pokeball, in the style of an icon with stained glass
by Nathaniel, Age 8



Pirate Ship by Zsafia, age 6



Holiday Memory: Jeff Mills on Alvin says one of his favorite holiday memories is "Building parade floats for Tournament of Roses on Jan 1. Unfortunately no parade this year because of COVID-19." Photo: Jen Mills



We will get through this together!

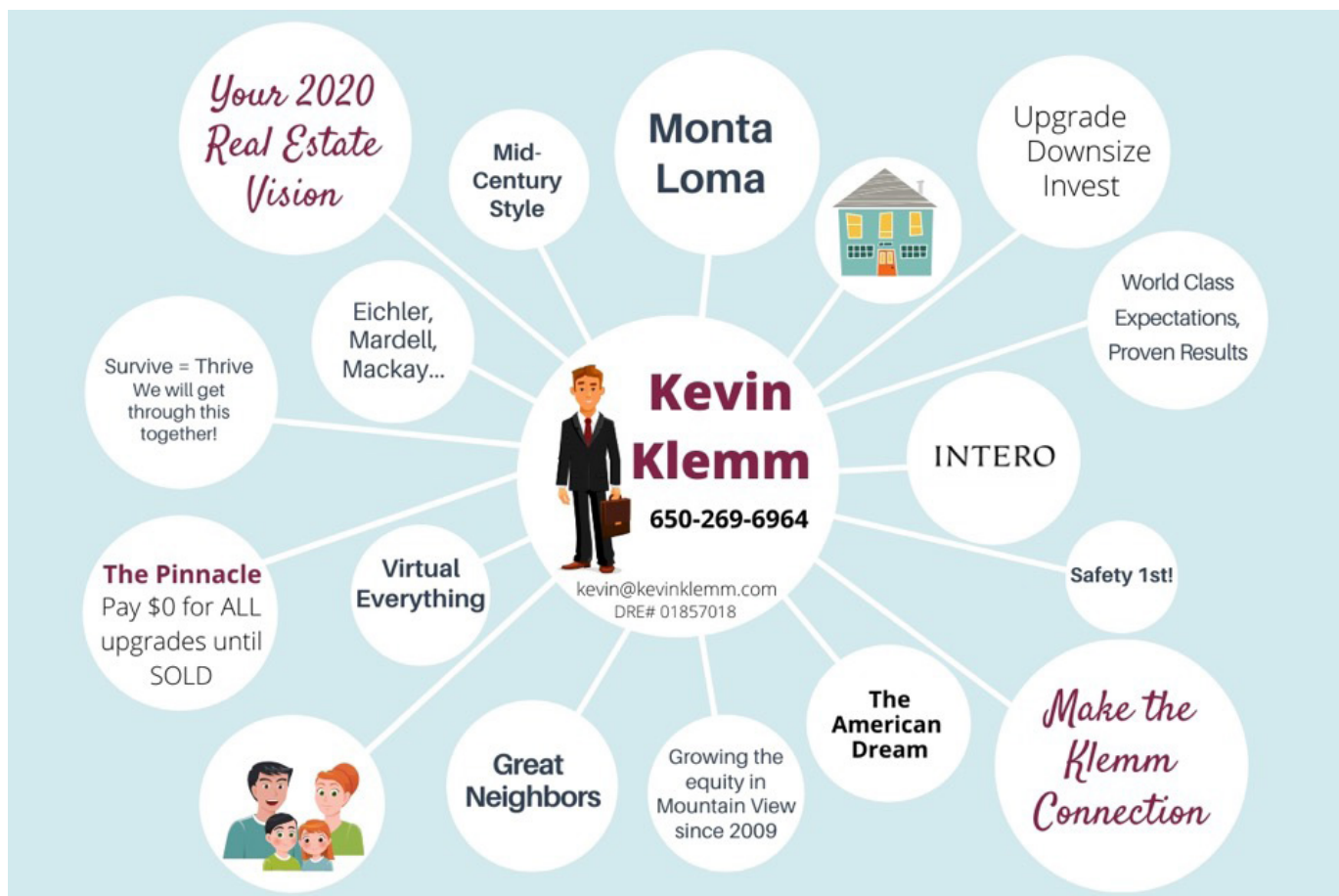
The Troyer Group has adapted to the 'new normal' so that we can safely help *everyone* achieve their real estate dreams.

Your home is where our heart is.

DAVID TROYER
DAVID@DAVIDTROYER.COM
650.440.5076
DAVIDTROYER.COM
LIC#01234450

INTERO
A Berkshire Hathaway Affiliate

BAIDRA MURPHY, Managing Broker
Proud Monta Loma Resident
BAIDRA@DAVIDTROYER.COM
650.383.7201
LIC#01216142



Successfully serving
Monta Loma for
more than 20 years



How can I help you?



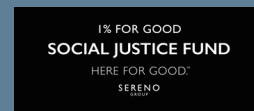
Nancy Adele Stuhr



Mountain View Neighborhood Specialist

650.575.8300
www.nancystuhr.com

nancy@nancystuhr.com
facebook.com/nancyadelestuhr
CalDRE# 00963170



SHELLY POTVIN & MICHAEL SUTTON
YOUR MONTA LOMA TEAM



**PLEASE REMEMBER WE ARE
ALWAYS HERE FOR ALL OF YOUR
REAL ESTATE NEEDS.**

We have a variety of tried & true tradespeople, for example:

- Electrician
- Painting
- Hardwood floor refinishing
- Many more...

Curious as to the current value of your home?

- Refinance/Lender Referrals
- We are here to sell your home for the highest possible price while following COVID guidelines.
- BBQ tips (Michael is a Pitmaster for a cook-off team)

**CONSIDERING
SELLING IN
SPRING 2021?**

Now is the time to
meet with us
(in-person or Virtually)
to get that plan in order.



SHELLY POTVIN
(650) 303-7501
shelly@serenogroup.com
ShellyPotvin.com
DRE # 01236885



MICHAEL SUTTON
(650) 799-2253
sutton@serenogroup.com
MichaelSuttonRealtor.com
DRE # 01916467



Wishing You a Safe and Happy Holiday Season

It has been a difficult year for everybody. Let's all take some time to enjoy the blessings of the season while continuing to STAY SAFE!

Monta Loma Specialist

*Selling Monta Loma homes since 1980.
I can sell your home safely. CALL FOR DETAILS*

*Visit my blog at www.Lmercercor.com for market updates
and home improvement ideas.*

Lynne Mercer

650.906.0162 • Lmercercor@Compass.com

DRE# 00796211



COMPASS



**Montessori
Hobbledehoy**

Pre-school and Child
Development Center

Full- and part-time

Owner operated
since 1990

2321 Jane Lane
Mountain View, CA

650-968-1155

www.hobbledehoy.org

Register for Classes Pacific Ballet Academy

Learn to dance! Offering classes for
all ages and levels



(650) 969-4614

www.pacificballet.org

295 Polaris Ave. Mountain View, CA



**New Patients Welcome
Friendly Exceptional Service**

**Shirley Irudayaraj DDS
877 W Fremont Ave Suite L1
Sunnyvale, CA 94087**

Call **408 498 0244**

www.dovedentalsmiles.com

HELMING'S AUTO REPAIR

Complete Car Care and Maintenance

Serving the Community Since 1976!

- Owned by a Monta Loma Family
- All Makes and Models
- Convenient 24-hour Drop-Off
- Certified Bay Area Green Business
- Expert Diagnosis Using State-of-the-Art Equipment
- Superior Service You Can Trust
- A Certified Smog Check Facility



We are taking every
precaution to keep
our customers and
staff safe from
COVID-19.



Helming's Auto Repair
2520-G Wyandotte Street
Mountain View, CA 94043
www.helmings.com
650-988-0460