

MONTA LOMA NEIGHBORHOOD NEWS

PROUD TO BE A MONTA LOMAN

Our neighborhood comes together in creative ways during a time when staying apart is mandatory.

With social gatherings on hold until further notice, unfortunately our block party planning is suspended for the time being. We are hopeful that later in the year we will be able to reconvene with our neighbors, sharing stories and treats out in our streets. But until we can do that, we have seen many blocks be resourceful and creative with ways to connect and stay entertained. In this special COVID-19 Edition of the Monta Loma Newsletter we have collected images and anecdotes to share with you that have brought pride to their creators and hopefully will also help bring joy, love, smiles, warmth and inspiration to you all.

Join us in a Neighborhood Wave!

When I take walks I enjoy seeing the care taken for our neighborhood, be it blooming front gardens, chalk drawings on the sidewalks, or seed libraries. Recently Mardell Way had a thoughtful chalk Easter egg display, and on West Middlefield Road there have been jokes displayed in home windows that have made me smile. I've been seeing more and more neighbors taking advantage of the beautiful weather for evening walks. Walking is good for you mentally as well as physically, and complies with the updated [Santa Clara County Health Order section 16.iii](#).

In the spirit of our neighborhood I propose a neighborhood "wave" on Wednesday, May 13th, between 7:00 and 8:00 pm. Come to your window, porch, or front or garage door, and wave to your neighbors across the street or those passing by during their evening stroll, while practicing 6-foot social distancing of course. Remember that six feet is equal to a lion- or llama-length, as cleverly shown on our neighborhood announcement boards.

Be strong, stay well, and together we will get through this.

—Tricia DelGaudio
and the MLNA board

MARK YOUR CALENDAR NOW

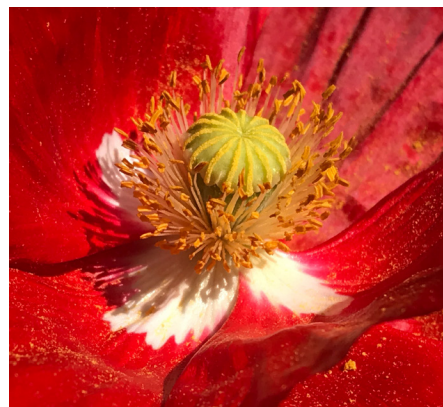
- May 13 Monta Loma Neighborhood Wave 7-8 p.m.
- May 20 MLNA Board Election (online vote) closes
- May 31 Bingo Game Closes

IN THIS EDITION:

Monta Loma Neighborhood Board Election Ballot	p. 5
Monta Loma Clean & Green	p. 6
Neighborhood Gallery	p. 8
Monta Loma Bingo Card: Win some MLN swag!	p. 9

Monta Loma Neighborhood Board Election

Typically at this time of year we would hold our annual meeting where we would gather together, talk about topics important to the neighborhood, and elect the board members for the coming year. This year's shelter-in-place mandate prevents us from gathering, but we do still need to hold the election. Voting instructions are on page 5, and we hope to be able to gather as a neighborhood community later this summer.



Neighborhood Poppy
Geri on Thompson

MLNA Board Members

Phone messages: (650) 691-5258

President

Tricia DelGaudio
president@montaloma.org

First Vice President

Chris Williams
vp1@montaloma.org

Second Vice President

Nirvana Nwikidu
vp2@montaloma.org

Treasurer

Andre Valente
treasurer@montaloma.org

Secretary

Baidra Murphy
secretary@montaloma.org

Newsletter Editor

Heather Schoell
newsletter@montaloma.org

Member-at-Large

Shannon Badiee
Marilyn Gildea (communications)
member-at-large@montaloma.org

MLNA Newsletter

Editor & Layout

Heather Schoell
newsletter@montaloma.org

Advertising Manager

Baidra Murphy
ads@montaloma.org

Illustrations/Photos

If interested in contributing, please email the editor for content ideas. Submissions for relevant cartoons also welcome.

© 2020 by the Monta Loma Neighborhood Association. All rights, including electronic posting and distribution, reserved. Individual article rights revert to the authors, and permission must be obtained from them to re-use their articles in any way.

MONTA LOMA NEIGHBORHOOD COVID-19 SUPPORT

MLNA-COVID-NEEDS Errand-Running Help List

How it works: Volunteer Errand Runners on the list receive requests for errand, coordinate who can pick it up, and deliver to the person who needs it.

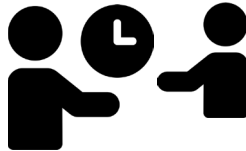
Do you need help with groceries, prescription pick-up or more?

If you are unable or uncomfortable going out and need help, the volunteers may be able to help you out.

1. Email the volunteer list with your request:
mlna-covid-needs@montaloma.org



2. A neighbor volunteer will contact you for details and a schedule.
3. You'll get a store receipt, pay for your goods, and a neighbor volunteer will deliver them at no cost.



If you do not have internet access, you can call the board phone number with the above information, and your request will be forwarded. (650) 691-5258

Willing to volunteer as an Errand Runner?

Add on to your already planned trips and help a neighbor at the same time. Contact Andre Valente at treasurer@montaloma.org to be added to the volunteer dispatch list. (mlna-covid-needs@montaloma.org)

Online Resource List

Visit montaloma.org/mlna-covid-resources/ for links to essential services, ways to help, and education and entertainment while we navigate this situation together. Shannon Badiee has been keeping this list updated with submissions that have been shared on our neighborhood email list, through our website and NextDoor. We urge you to check it out as there are some real treasures there.

Phone Support

Dial 2-1-1 to access the county's COVID-19 support line. Services are available 24/7 in 150 languages.

Check in on Your Neighbors.

Wave as you walk by, offer smiles from your doorstep to show you are OK, and help where you can. Even the smallest ways count.



B. Murphy

Neighborhood Clubs & Activities

Knitting Group

The Monta Loma Knitting group continues to meet monthly, and this past month they met by Zoom. Whether you knit, crochet, or bring another craft, all are welcome to join. Contact Ann Togasaki at ann.togasaki@gmail.com to join the group's email list.



Garden Club

Currently not meeting due to S.I.P requirements, but actively exchanging information. If you are interested in joining, write to Karla Valente at klvalente@yahoo.com.

Gear up for Spring

Get ready for summer in Monta Loma by putting on your hat and relaxing with your morning coffee on your back patio. Stock up on Monta Loma gear including mugs, hats, frisbees, and pens. See them at montaloma.org/mln-logo-items and contact Tricia at president@montaloma.org to buy. If a t-shirt is on your wish list, check out the offerings at montaloma.org/monta-loma-tee-shirts-still-available, and contact Marilyn at marilyn@gildea.com or 650-940-1606 to buy.



Monta Loma Elementary Updates

By Gloria Higgins, Principal

As you most likely know, school sites are closed through the remainder of the school year. While we miss the hustle and bustle of school, we are grateful for all you are doing to practice physical distancing and flatten the curve. During school closure, we are offering distance learning for all our students. You may find information about distance learning at montaloma.mvwsd.org.

Even through this unusual time, we are accepting registration for new and returning students at all grade levels for next year. Early registration helps us plan for appropriate staffing, so do let us know if your child will be attending Monta Loma next year. To register a student, visit mvwsd.org and find the "Register a Student" link under the Services and Requests menu.



Tiger by Vivienne, age 5



Crow by Liliana, age 7

Neighborhood Resources

Community Emergency Response Team (CERT)

Tim Slattery, (650) 964-6389
CERT@montaloma.org

Neighborhood Watch Coordinator

Tom Purcell, (650) 224-5110
MontaLomaNBC@gmail.com

Traffic/Parking Liaison

John Canata, (650) 269-5646
traffici liaison@montaloma.org

MLN Neighborhood Email List

List owner: Peggy Manor
To join: mamm@pobox.com

To join the Announcements-Only list, go to montaloma.org/mlna and click on MLNA Email Lists.

MLNA Websites

www.montaloma.org
Referrals: localwiki.org/montaloma
Webmaster: Hien Do
webmaster@montaloma.org



Thanks to those who delivered the last newsletter: Susan Jee, Ivy Lu, Jim Fair, Raymond White, Donna Clarke, Harry Gordon, John Thomas, John Canata, Maria Harnoto, Jim & Alice Cochran, Paul Kostka, Vannina Champenois, Jen Wakefield, Chuck & Cookie Henderson, Herb & Victoria Perry, Martha Elderon, Diane McCleary, Dave McCleary, Leane Reelfs

We welcome more volunteers, even those who can help only occasionally. It's a good way to get to know your neighborhood and get an hour's exercise. Contact the editor to learn more.



Courtesy of Mountain View Police Department

Time for a Home Security Check-Up

There's no time like the present to do a home security check-up while you're at home. If you are able, purchase home security cameras that will alert you to odd movements in and around potentially vulnerable points of your home. To reduce options for breaking and entering, put away all gardening tools prior to heading out. Make it harder for people to look into your home by allowing your bushes and trees to grow a bit higher, and put locks on your windows—something as simple as a wood dowel could help. (*City of Mountain View* tinyurl.com/security-check-up)

What is CERT Doing During the Pandemic?

By Tim Slattery, CERT Leader

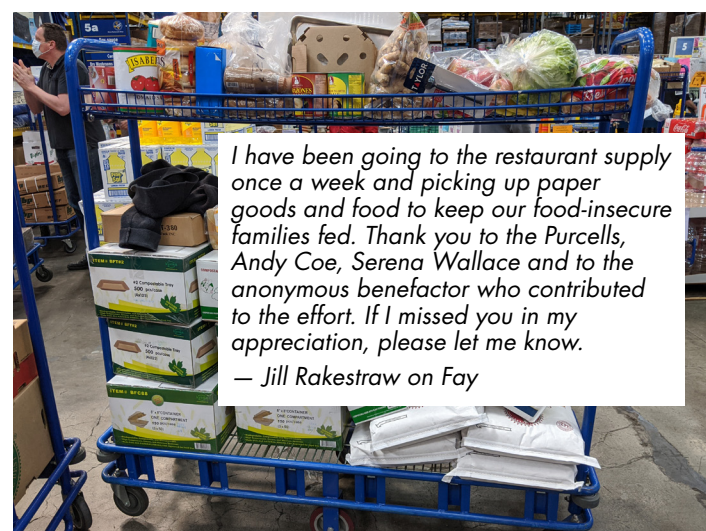
CERT teams are trained to help with emergencies, like a major earthquake, when phones and other forms of communication will be unavailable. They also know how to work with untrained neighbors, and to collect information during a response. Although some simple first aid is taught, the CERT team members are not trained on how to work safely around neighbors with Covid-19. This means that they would be at risk from exposure, and since many of the team are over 60 years old, this would be an unacceptable risk. The team is working with city emergency response organizations to determine if there is something they can do to help, but at this time the team is sheltering-in-place like many of their neighbors.

Traffic & Parking Resources

By John Canata, MLNA Traffic and Parking Liaison

A few contacts for your reference:

- Abandoned vehicle (more than 3 days): call (650) 903-6358.
- Police enforcement at a specific intersection: call (650) 903-6146.
- Other traffic related concerns: e-mail traffici liaison@montaloma.org



Vote for the 2020-21 Monta Loma Neighborhood Association Board of Directors

Vote for each office. All candidates are running uncontested, but you may write in an alternative.

Online Voting Instructions:

Visit [slido.com](https://www.slido.com), enter event #72640 and cast your vote by May 20 at 8 p.m.

Paper-Ballot Voting Instructions:

Place your completed ballot in a small envelope and seal the envelope. Do not write anything on the small envelope. This envelope preserves the anonymity of your vote and comments and will be opened by the election committee.

Place the small envelope in another envelope, and write your name and address on this outer envelope. This lets us know you've voted. Seal the envelope.

Return the ballot to the mail box at 2552 Mardell.

Do not ring the bell or knock.

Voting closes on May 20 at 8 pm.

Any problems getting to the drop off location, please call or email the board and we will find someone to assist you. (650) 691-5258 board@montaloma.org

Candidates:

	yes	no
President: Tricia DelGaudio	<input type="checkbox"/>	<input type="checkbox"/>
First Vice President: Chris Williams	<input type="checkbox"/>	<input type="checkbox"/>
Second Vice President: Nirvana Nwokidu	<input type="checkbox"/>	<input type="checkbox"/>
Treasurer: Andre Valente	<input type="checkbox"/>	<input type="checkbox"/>
Secretary: Baidra Murphy	<input type="checkbox"/>	<input type="checkbox"/>
Newsletter Editor: Heather Scholl	<input type="checkbox"/>	<input type="checkbox"/>
Member at Large: Marilyn Gildea	<input type="checkbox"/>	<input type="checkbox"/>

Write in:

Lend your skills to Monta Loma Neighborhood Association

The neighborhood is always in need volunteers, and there is room on the board for more members at large. Contact the board if you are interested.

Non-elected roles we need help with:

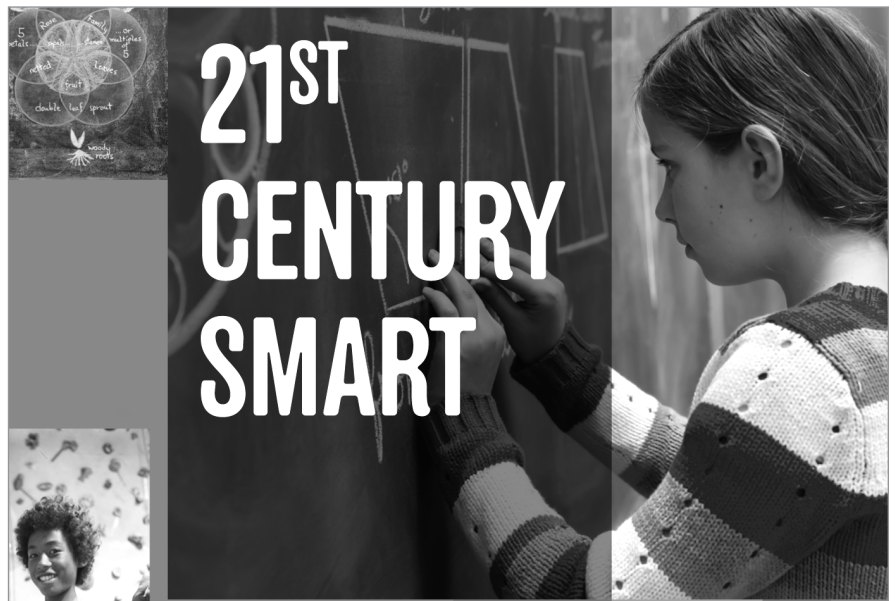
Tech Support—manage web hosting and email client.

Web Layout Support—Ideally a Wordpress person, but open to other platforms. We'd like to update the website structure in 2020 to make things easier to find.

Web Designer—lead a UI/UX overhaul of the Monta Loma website.


Content management support—keeping the Wiki up to date as well as helping manage web content and resources.

Email board@montaloma.org if you're interested in helping.



21ST CENTURY SMART

waldorfpenninsula.org
Nursery through High School



WALDORF SCHOOL OF THE PENINSULA

KEEP MONTA LOMA CLEAN & GREEN

Updates to Recology's Services during S.I.P.

Through the end of the Shelter-in-Place order, Recology will not pick up material outside of residents' carts in order to limit exposure to drivers. **Residents may not set out extra bags of trash or extra recycling outside of the carts.** Residents can request an additional service if needed before their next collection day. See the guidelines here: www.mountainview.gov/cleanup

Keeping Monta Loma Clean and Green

Street sweeping:

- Help the sweeper clean your gutter by moving your vehicles and trash bins off the street the evening before the second and fourth Thursdays of each month. This is especially important in spring with dropping tree debris.
- Cars should be moved by 6:00 a.m.
- Upcoming street sweeping dates: 5/14, 5/28, 6/11, 6/25, 7/9, 7/23.
- If you have tenants who park on the street, please keep them informed of dates as well.

Dogs:

- Always pick up dog messes deposited at the Monta Loma Park fields. Dogs will not be allowed on fields when school is back in session.
- Pick up droppings from yards.
- Please don't deposit doggie bags in neighbors' trash cans after they've been emptied.
- Incontinent dogs should be walked in the gutter, not on sidewalks.

What goes in which bin: Visit mvrecycle.org

Paper Shredding:

- July 11, 8:00 to noon at the SMaRT Station, 301 Carl Rd., Sunnyvale. **Check website to confirm.*
- Read the guidelines under Events at mvrecycle.org or call (650) 903-6311 so you won't be turned away.
- If you shred at home, please put the shreds in paper bags, stapled shut, so they won't litter the street when the recycling cart is emptied.

Moving out? Go to HHW.org or call (408) 299-7300 for a list of household hazardous waste collection options.
Note: Hazardous waste drop-off is currently closed.

Moving in? If you found unwanted household chemicals in your new house, visit or call HHW to find nearby household hazardous waste drop-off locations.

Seed and Cutting Library

By Wouter Suverkropp

Come on by the free seed and cutting library at 328 Aldean Avenue. Leave what you can share, take what you will use. There are flowers, veggies and more. Envelopes and labeling supplies are in the bottom drawer, and cuttings will be cared for so they don't go to waste. We advise leaving the envelopes in quarantine for a couple of days once you bring them home.



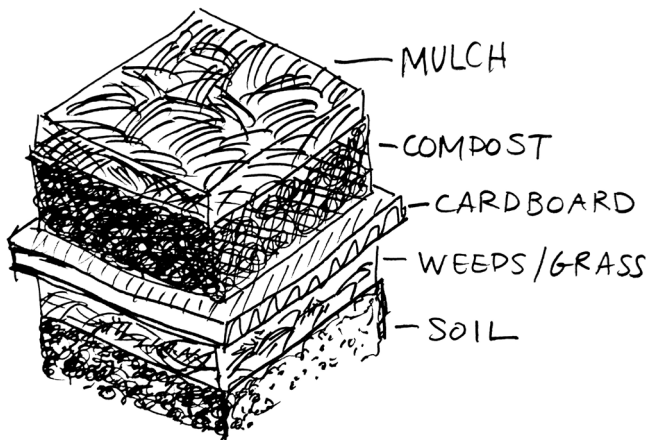
TIME TO TAME THE MONTA LOMA JUNGLE

Eliminate Weeds with Sheet Mulch

By Alan Whitaker, Alvin St., California Native Plant Enthusiast

Lawns and other garden areas often become just something to care for. Green or brown, it consumes fertilizer, sprays, bags of wood chips, and the water, trying to smother that which starts again next year. Our soil here grows anything, you already know that. Let's get it to work for you. Turn what you have into a yard that flourishes which supports and attracts local wildlife around us to enjoy.

It takes neither endless time nor resources for this to happen. Sheet mulching traps moisture, quickly turning lawn or garden space weeds and unwanted vegetation into soil and does not give any new weeds that do come an easy hold, while new drought tolerant plantings can spread over the area. A sensible plan includes California Native plants (which already know how to grow here) with tree mulch, cardboard sheeting, little or no added water, and some enthusiasm, and you can accomplish this in a weekend. Learn more here: [youtube.com/watch?v=4PBOYm_iXmc](https://www.youtube.com/watch?v=4PBOYm_iXmc)

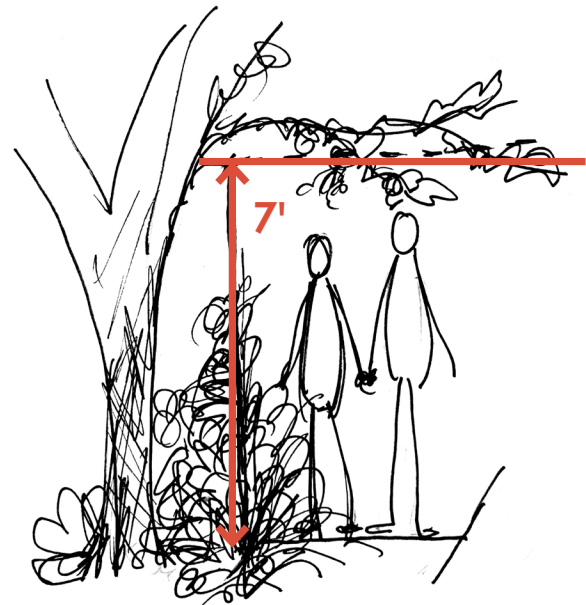


Watch out for Foxtail Grasses

Foxtails are proliferating in the neighborhood and are a hazard to pets and wildlife. The barbed seeds can lodge themselves into an animal's paws, get inhaled into their noses and even travel through the body causing pain and injury, requiring costly surgery for removal.

Please pull out the plants when possible. If you must mow, bag for disposal, and always sweep the sidewalk clear of remaining debris.

Dog owners are advised to keep dogs on a tight leash away from yards with foxtails, keep fur between toes trimmed and check if your dog is licking its feet. The sooner the foxtail is identified and removed, the less likely to cause issues.



Trim back Your Overgrowth

Walking down the sidewalk can be a pleasant way to escape our homes during shelter in place, but it becomes an obstacle course of staying 6 feet away from other pedestrians and also finding clear sidewalks without vegetation invading the path or trees brushing our heads.

Please take this opportunity to check your sidewalk and confirm that it is clear all the way across, and up to 7 feet over head (per city code). Hedges should also be pruned away from the sidewalk, not leaning over into the walkway, and tree branches should be cut back. Ground-covers and grasses should be trimmed back, not creeping onto the concrete.

Monta Loma has many lovely gardens best enjoyed when kept trimmed to leave the sidewalk fully available for walking. That way we can lift our eyes from the obstructions of overflow growth and simply admire their variety and beauty.

FINDING JOY IN THE TIME OF CORONA



Here are my vegan cinnamon rolls I perfected! They taste just like the original.

Kristin on Middlefield

Kristin's Amazing Vegan Cinnamon Rolls

(No one can tell they're vegan! Easily adaptable to non-vegan)

Dough

- 1 ½ cups warm water
- 2 packets active dry yeast
- 2 T sugar
- ¼ cup olive oil, plus more for bowl and brushing
- 2 teaspoons salt
- 4 cups unbleached all-purpose flour (spooned and leveled), plus more for work surface

1. Pour 1 ½ cups warm water into a large bowl. Sprinkle with yeast and let stand until foamy, about 5 minutes (sometimes longer)
2. Whisk sugar, oil and salt into yeast mixture. Add flour and stir until a sticky dough forms. Do not mix too much. Dough should be a bit sticky.
3. Transfer dough to an oiled bowl and brush top with oil. Cover bowl with lightly greased plastic wrap and set aside in a warm place until dough has doubled in bulk. About 1 hour.
4. Turn onto a lightly floured work surface and shape into a rough rectangle. Roll out until the dough is about 10x18 inches. (I never measure exactly)

Filling

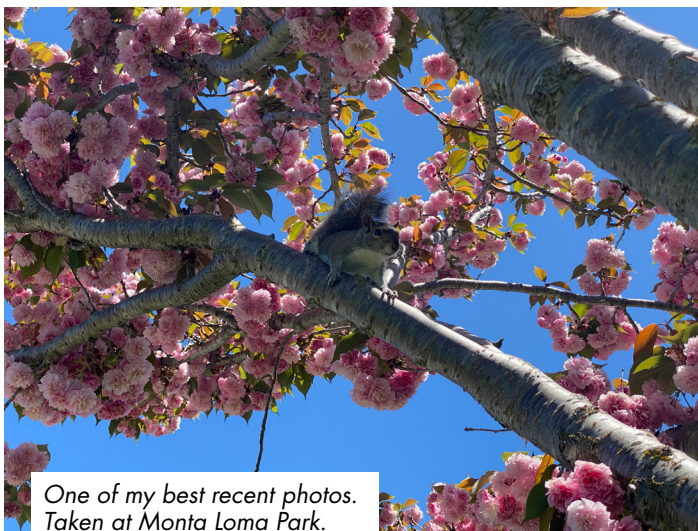
- 8-12 T vegan butter, softened. Miyokos brand is delicious. (Use regular butter for non-vegan)
- ¾ cup packed light brown sugar
- 1 T cinnamon

1. Blend all filling ingredients and spread all over dough
2. Roll up the longest side of the dough tightly
3. Using unflavored dental floss cut into 12 equal rolls
4. Place rolls about an inch apart in a greased 9x13 baking dish.
5. Cover with greased plastic wrap and let rise 1 hour
6. Bake at 350 degrees for 18-25 minutes until lightly golden and baked through.

Icing

- 8 T vegan butter, softened
- Pinch salt
- 2 T dairy free milk (or regular milk for non-vegan)
- ½ teaspoon vanilla extract
- 1 ¾ cups powdered sugar

1. Mix butter, salt, sugar, milk and vanilla with a hand-held or stand mixer until creamy.
2. Add powdered sugar and mix again. Add milk for thinner icing and powdered sugar for thicker icing.
3. Spread over slightly warm rolls. Enjoy!



One of my best recent photos. Taken at Monta Loma Park. Scott Hutton on Dell



We've been repurposing furniture. Here's an antique dresser we just completed. Diane on Fay



This is Kevin O'Leary, Thompson Square, working on a jigsaw puzzle. He and his wife, Nadine, have several friends who do jig saw puzzles on a regular basis, so Kevin has plenty to keep him busy.

BEHIND THE MASK, MONTA LOMA SMILES



I just finished this painting, "From the Fountain of Youth." It's a glass of water from the Fountain of Youth that has been drunken from, with eyeglasses that are no longer needed as an added side effect.

— Jennifer Marie Keller



Pearl Kruss on Benjamin is an artist and holistic practitioner. She has led workshops in guided visualization and art in CA and Israel. Her coloring sheets are available in the digital edition of the newsletter available on MontaLoma.org



I've been making masks for friends and Red Cross. Linda on Thompson Sq.



Baking from Scratch Jay on Thompson

Cactus	Little Free Library	Llama on a sign	Christmas Lights	2 Dogs on a Walk
Hawk	Redwood Tree	A Silly Joke	Front Yard Vegetable Garden	House with a Blue Door
Tree in Bloom	Bear in a window	FREE	Vintage Car	Purple Flowers
Dinosaur	House with a Yellow Door	Rainbow in a Window	A Cat in a Garden	Huge Palm Tree
Sidewalk Chalk Art	Pink Flamingo	Person Riding a Unicycle	Free Lemons	Tree Swing



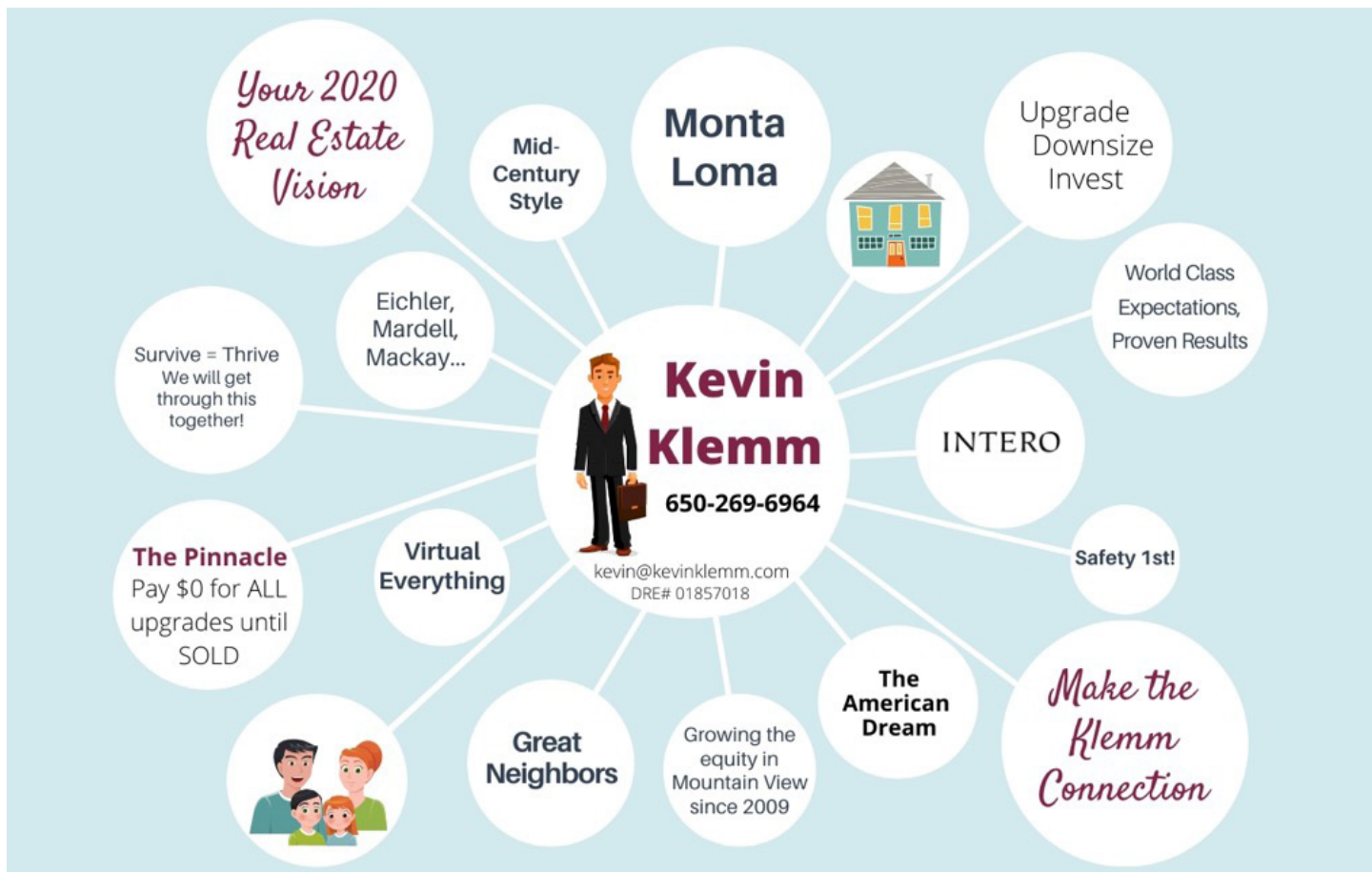
My First Noodles Debbie on Palmer

Play Neighborhood Bingo. Share some Photos. Win Some Swag.

- Use the bingo card as you walk around the neighborhood.
- Take photos of the things you find.
- Get BINGO (5 in a row)
- Email five of the best photos* with a pic of your completed card to newsletter@montaloma.org
- Choose a Monta Loma Neighborhood hat, mug or frisbee to show your pride.**

*By sharing your photos with us, you are allowing us to post on social media, the MLN website and in the newsletter.

**While quantities last.



Your home is where our heart is.

DAVID TROYER
DAVID@DAVIDTROYER.COM
650.440.5076
DAVIDTROYER.COM
Lic#01234450

INTERO
A Berkshire Hathaway Affiliate

BAIDRA MURPHY, Managing Broker
Proud Monta Loma Resident
BAIDRA@DAVIDTROYER.COM
650.383.7201
Lic#01216142

Successfully serving
Monta Loma for
more than 20 years



How can I help you?



Nancy Adele Stuhr



Mountain View Neighborhood Specialist

650.575.8300

email: nstuhr@serenogroup.com

web: nancystuhr.com | facebook.com/nancyadelestuhr

CalDRE #00963170



SHELLY POTVIN & MICHAEL SUTTON
YOUR MONTA LOMA TEAM



*Please remember we are always here
for all of your real estate needs...*

We have a variety of tried & true tradespeople, for example:
electrician, hardwood floor refinishing, painting, and many more!

Curious as to the current value of your home?

Refinance/Lender Referrals

BBQ tips (Michael is a Pitmaster for a cook-off team)

WANT TO BE IN THE KNOW?

Join your neighbors in receiving
our weekly email list that provides
you with the weeks worth of
real estate activity!

Go to: **YourMontaLomaTeam.com**
and click on 'join email list'



SHELLY POTVIN
(650) 303-7501
shelly@serenogroup.com
ShellyPotvin.com
DRE # 01236885



MICHAEL SUTTON
(650) 799-2253
sutton@serenogroup.com
MichaelSuttonRealtor.com
DRE # 01916467



Your Personal Safety is My #1 Priority

*If you want to sell your home now,
I will sell it safely for you.*

I am here for you now and I will be here for you when this crisis passes. In the meantime, **STAY SAFE!**

Visit www.Lmercerc.com to read my Article of the Month:
"Selling Your Home During Covid Crisis"



Lynne Mercer

Monta Loma Specialist

650.906.0162 • Lmercerc@Compass.com

DRE# 00796211



**Learn with Joy.
Grow with Empathy.
Explore with Confidence.**

*Discover how a bilingual education
can forever impact your child.*

We welcome you to visit us!

**Yew Chung International School
of Silicon Valley**

Preschool to Grade 8

www.ycis-sv.com

650 903 0986

admissions@sv.ycef.com

Register for Classes **Pacific Ballet Academy**

Learn to dance! Offering classes for
all ages and levels



(650) 969-4614

www.pacificballet.org

295 Polaris Ave. Mountain View, CA



**New Patients Welcome
Friendly Exceptional Service**

**Shirley Irudayaraj DDS
877 W Fremont Ave Suite L1
Sunnyvale, CA 94087**

Call **408 498 0244**

www.dovedentalsmiles.com

HELMING'S AUTO REPAIR

Complete Car Care and Maintenance

Serving the Community since 1976!

- Owned by a Monta Loma Family
- All Makes and Models
- Convenient 24-Hour Drop Off
- Certified Bay Area Green Business
- Superior Service You Can Trust
- A Certified Smog Check Facility
- Expert Diagnosis Using
State-of-the-Art Equipment



Mike and Leane Reelfs, Owners

**We are an
essential business
and open. We
are taking every
precaution to keep
our customers &
staff safe during
this pandemic.**

[f Follow Us](#)



Helming's Auto Repair
2520-G Wyandotte Street
Mountain View, CA 94043
650/988-0460 | www.helmings.com





