

MONTA LOMA NEIGHBORHOOD NEWS

Monta Loma Neighborhood Association Annual Meeting and Board Election Wednesday May 29, 7:00 p.m. at 250 Mayfield Ave. (It's the smaller Google building, on the east side of Mayfield.)

7:00 p.m. Doors open for setup, sign-in, and refreshments. Chat with the board members and candidates.

7:15 p.m. Meeting begins with president's update.

7:30 p.m. Presentation of candidates and voting.

7:45 p.m. Program to include a presentation by Jodie Pierce, Mountain View Police Department, on the topic of neighborhood crime prevention. Please stay tuned to the Monta Loma email list or check back on montaloma.org for additional details on the program closer to the date.

MLNA Board Election

Please participate in the election on May 29 to vote on your board members. If you like what we're doing, come and vote for us. If not, replace any or all of us. As always, all positions are open. The positions are described at montaloma.org under MLNA.

Our acting president, Tricia DelGaudio, is interested in staying on as president, leaving vacant positions for first and second vice president, and a member-at-large. Our treasurer, secretary and one member-at-large are also volunteering to stay on, but we welcome hearing from anyone interested in joining the Board. If you appreciate living in our neighborhood, this is a good way to give back.

Nominations may be made from the floor at the election (with the consent of the nominee), but to place your name on the printed ballot, or to obtain an absentee ballot, contact Baidra Murphy at secretary@montaloma.org or (650) 691-5258 by 6 p.m. on Friday, May 24.

MARK YOUR CALENDAR NOW

- May 29: MLNA Annual Meeting with Election, 7 p.m.
- June 7: Last Day of Monta Loma School
- June 8: CERT Session, 9–11 a.m. (second Saturdays)
- August 25 MLNA Ice Cream Social, 3–5 p.m.



Get your Monta Loma Gear

Show your pride in our neighborhood by wearing a Monta Loma tee shirt. You can order shirts at the annual meeting or until early August. The once-a-year order will be submitted in early August so we'll have them in time for the Ice Cream Social.

We will order some gray and some red shirts for sale at the ICS, but many other colors are available if you special-order your preferred style and color in advance. Ordering instructions are on montaloma.org, or contact Marilyn at marilyn@gildea.com or (650) 940-1606. Also contact Marilyn if you want one of the shirts from last year's order.

New Monta Loma Neighborhood items will be available for purchase at the annual meeting. Some of the new items include baseball caps, pens, and mugs, with more to come at the Ice Cream Social.

MLNA Board Members

Phone messages: (650) 691-5258

President (Acting)

Tricia DelGaudio
president@montaloma.org

First Vice President

Vacant; please volunteer

Second Vice President

Vacant; please volunteer

Treasurer

Andre Valente
treasurer@montaloma.org

Secretary

Baidra Murphy
secretary@montaloma.org

Newsletter Editor

Heather Schoell
newsletter@montaloma.org

Member-at-Large

Isabella Hill
Nirvana Nwikidu
member-at-large@montaloma.org

MLNA Newsletter

Editor & Layout

Heather Schoell with
Marilyn Gildea (editor emeritus)
newsletter@montaloma.org

Advertising Manager

Sumanth Rajagopal
(650) 967-9967
ads@montaloma.org

Copyright 2019 by the Monta Loma Neighborhood Association. All rights, including electronic posting and distribution, reserved. Individual article rights revert to the authors, and permission must be obtained from them to re-use their articles in any way.

Monta Loma Email List has a New Home

By Peggy Manor

The neighborhood email list has been a resource for about twenty-one years allowing us to share requests, information, and much more. The list now has a new home as a Mailman list on the Monta Loma Neighborhood web site. This change was made in the hope that it will be easier to use, and so far, with a few glitches, it seems to be working.

If you were a list member, you should have received an invitation to join. If you did not, it is not too late. If you would like to be added as a first-time member that is possible now. In either case please email Peggy Manor at mamm@pobox.com. Give your name and your address. You may be asked a residence-verification question.

The new list has the same rules: Members must be Monta Loma residents or property owners, and it is an information and referral list, not a discussion list.

One Monta Loman's Trash was Another's Treasure

By Marilyn Gildea

Thanks to all those who helped make our neighborhood garage sale a success: to the 21 families who registered their sales to be publicized on the neighborhood email list, our montaloma.org website, NextDoor, and the Voice's online Community Calender; to those who also set out their no-longer-needed items to pass along; and to all those who visited the sales.

Special thanks go to former MLNA Board President Bill Cranston for the A-frame signs, which directed those not on the email list to the website for the list of sale locations.

The event was recycling at its best, plus an opportunity to meet more of our neighbors.



Summer Vacation Home Security Tips

By Tom Purcell, Monta Loma Neighborhood Watch Captain

Summer is coming so it's important to remember a few home security tips to keep things safe while you're on vacation. Be sure to let your trusted nearby neighbors know when you're gone so they can keep an eye on your place while you're gone. If you don't already know your immediate neighbors, I recommend throwing a block party. It's fun and a great way to get to know the people on your street. Be sure to lock all windows and doors. If you have older locks, consider upgrading them to newer, higher security lock sets. Windows can be secured by putting a dowel in the sill.

While you're gone, make your absence less obvious. Be sure that mail, packages, and newspapers don't accumulate. Pause your deliveries and ask your neighbors to pick up anything else that's left unexpectedly. Have some interior lights on, using a timer if you want to save energy during the day. Some people also leave on a radio or a television, the noise will make it seem like people are home even when they aren't. If you have cameras or a home security system, be sure you know how to access it remotely before you leave—many newer systems have an app you can run on your phone.

Finally, don't advertise your absence on publicly accessible public social media.

Either wait to post your vacation pics after you're home or restrict posts to private, friends only groups.



vecteezy.com

Monta Loma CERT Participates in City-wide Emergency Drill

By Tim Slattery, CERT Leader

On April 27 there was a city-wide CERT Drill. Nine of the 17 CERT neighborhoods in Mountain View participated in this drill, including our Monta Loma CERT. We set up our command post near the trailer at Monta Loma Elementary School. The city assigned ham radio operators to our site to handle communications between our neighborhood and the city's Emergency Operations Center.

For the drill we were simulating an earthquake, so the first task was to survey the neighborhood for damage. This estimate of damage allows the city to decide where to allocate its resources, and, if justified, to request further assistance from county, regional or state resources. Since there was no real earthquake damage for our teams to look for, we used a table of stand-in features for the search. For example, if you had Christmas lights on your house, that was a stand-in for moderate building damage (there are three levels of building damage; light, moderate and severe), or if you had cactus in your yard, that was a stand-in for a water leak. These and other types of damage, injuries and hazards are relayed back to the command post by radio, where they are recorded and compiled for transmission to the city. Any threats to life or property are also evaluated for response by CERT volunteers.

CERT training prepares us to help with basic first aid, light search and rescue and other skills that may be needed in the aftermath of an earthquake.

Emergency Response Volunteers Welcome

By Tim Slattery, CERT Leader

Are you interested in working with your neighbors to be better able to assist others in an emergency? Members of Monta Loma's CERT (Community Emergency Response Team) encourage you to take the city's free CERT course, whether or not you join our neighborhood group. The next series begins on October 3. Visit montaloma.org/cert for a link to information.

You can check out Monta Loma's CERT at any of our Saturday sessions on the second Saturday of the month, between 9 and 11 a.m. at our trailer on the north side of the school. Our next session is on June 8.

Questions? Contact me at CERT@montaloma.org or (650) 964-6389.

CERT is Accepting Donations

Monta Loma's CERT is a member of the Association of Mountain View Neighborhood CERTs (AMVNC). The AMVNC was incorporated as a 501(c)(3) organization to help the Mountain View neighborhood CERT groups share resources, and to make it easy for supporters to make tax-deductible in-kind or money donations to support any or all of the CERTs.

This year neighbors have donated a compact stretcher and ham radio equipment that will enhance our ability to respond to emergencies.

Visit montaloma.org/cert for a link to the AMVNC's donations page.

Traffic Updates

By John Canata, MLNA Traffic and Parking Liaison

Since the last newsletter a barrier has been installed at the intersection of Nita and Nita to keep drivers and bikers from cutting across the yellow line to turn left into the neighborhood.

If you want to discuss a traffic or parking concern with me and not everyone on the list, contact me at traffici liaison@montaloma.org or (650) 691- 5258.

On another note, If you would like to report an abandoned vehicle, please call (650) 903-6358.

Neighborhood Resources

Community Emergency Response Team (CERT)

Tim Slattery, 964-6389
CERT@montaloma.org

Neighborhood Watch Coordinator

Tom Purcell, 224-5110
MontaLomaNBC@gmail.com

Traffic/Parking Liaison

John Canata, 269-5646
traffici liaison@montaloma.org

Preschooler Network

Elisa Ewing and Scott Lamb
Darcy Koch
tinyurl.com/mlpreschoolernetwork

MLN Neighborhood Email List

List owner: Peggy Manor
To join this list email Peggy at mamm@pobox.com

To join the Announcements-Only list go to montaloma.org/mlna and click on MLNA Email Lists.

MLNA Websites

www.montaloma.org
Referrals: localwiki.org/montaloma
Webmaster: Hien Do
webmaster@montaloma.org

Thanks to those who delivered the March newsletter: John Canata, Vannina Champenois, Donna Clarke, Jim and Alice Cochran, Martha Elderon, Grant and Birgit Grundler, Maria Harnoto, Susan Jee, Chuck and Cookie Henderson and Griffen, Paul Kostka, Vickie Lee, Vania Dias Mendonca, Linda Powers (2), Leane Reelfs, Maureen Sheehan, Cheryl Smith, Raymond White, and Pat Young.

We welcome more volunteers, even those who can help only occasionally. It's a good way to get to know your neighborhood and get an hour's exercise. Contact the editor to learn more.

Keeping Monta Loma Clean and Green

Despite our winter of heavy rain, we are still in a drought prone area. Follow these water-wise tips to use our water resources responsibly:

- Arrange for a free Water Wise survey of your garden through Santa Clara County. www.valleywater.org/saving-water/residential/water-wise-surveys
- Report broken irrigation in public areas to Mountain View Public Services at (650) 903-6329
- Mulch your garden to keep it moist with free mulch from many tree trimming services.
- Use commercial car washes instead of your hose in the driveway for more efficient water use and better waste disposal.

Walkable Sidewalks:

- Please trim your greenery back to the full width of the sidewalk and to a height of seven feet, as required by city code.
- Please keep weeds under control, especially those nasty foxtails that get into our pets' toes, ears, and noses.
- Sweep sidewalks after mowing weeds.

Dogs:

- Monta Loma Park fields and school grounds are off limits to dogs during school hours. Pick up dog messes deposited at other times.
- Pick up droppings from yards.
- Please don't deposit doggie bags in neighbors' trash cans after they've been emptied.
- Incontinent dogs should be walked in the gutter, not on sidewalks.

Street sweeping:

- Help the sweeper clean your gutter by moving your vehicles and trash bins off the street the evening before the second and fourth Thursdays of each month.
- Cars should be moved by 6:00 a.m.
- Upcoming street sweeping dates: 5/30, 6/13, 6/27, 7/11, 7/25.
- If you have tenants who park on the street, please keep them informed of dates as well.

Moving out? Go to HHW.org or call (408) 299-7300 for a list of household hazardous waste collection options.

Moving in? If you found unwanted household chemicals in your new house, visit or call HHW to find nearby household hazardous waste drop-off locations.



vecleazy.com

New Garden Club Sprouts in Monta Loma

Monta Loma's gardening enthusiasts get together once a month, exchange seeds, cuttings, and information. Last meet-up they shared succulents, dragon fruit, lemon balm, vinca, redbud, tomatoes, birdhouse gourd, and lettuce. They learned about bee-friendly gardens, poppy seeds, how to plant dragon fruit, and how to improvise a greenhouse.

Each month will have a theme and will cover monthly/seasonal garden tips. All gardeners are welcome, from first time veggie growers to experienced native plant experts. As the group is just getting started, stay tuned to the MLN email list for June meeting announcements, and email Karla Valente for more information. klvalente@yahoo.com



vecleazy.com

Connecting Families

The MLPreschooler group has been busy collecting opinions on the future directions and needs of the group, and there has been a new effort to connect families with similar interests.

Please join our membership list by visiting tinyurl.com/mlpreschoolernetwork.

Enjoy Folk Music?

Contact Joel Orr at joel.orr@gmail.com or (650) 336-3937 to be notified of this group's meetings.

Knitting Group

The Monta Loma Knitting group continues to meet monthly. Whether you knit, crochet, or bring another craft, all are welcome to join. Contact Ann Togasaki at ann.togasaki@gmail.com to join the group's email list.

Pet-Sitting Exchange

If you would like to join this email list, contact Caroline Chan at wpturtle@gmail.com.

Want More Activities in Monta Loma?

The many established and new clubs formed in Monta Loma are great ways to get to know your neighbors beyond next door. If you wish to help organize a group or project, look for the sign-up sheet on the MLN Info Table at the annual meeting or contact the MLNA Board at board@montaloma.org or (650) 691-5258.

Summer Fun in Monta Loma

Get Ready for the Summer Ice Cream Social

By Marilyn Gildea

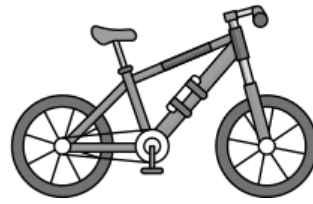
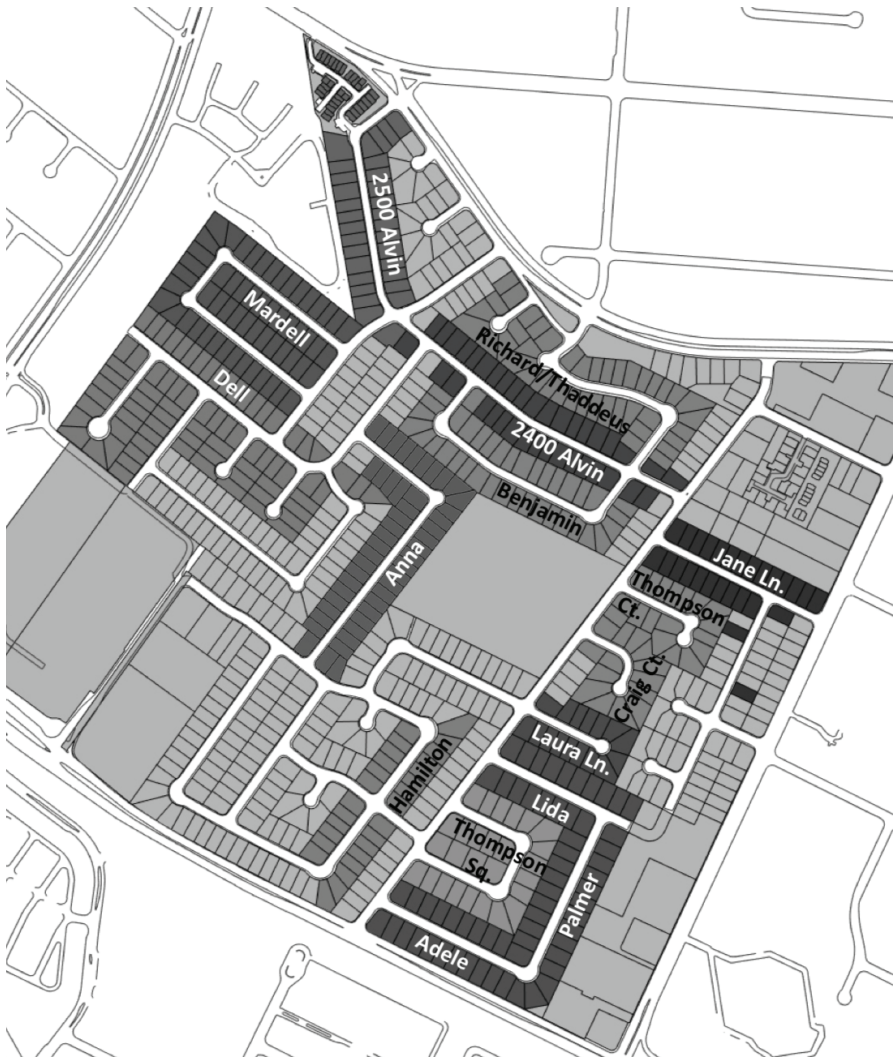
The MLNA Ice Cream Social, our biggest event of the year, is scheduled for Sunday, August 25, 3 to 5 p.m. It will again feature free ice cream and toppings, plus entertainment for the kids and displays of neighborhood information. It's all designed to entice you to Monta Loma Park to meet your neighbors, which is its real purpose.

We always get great neighborhood response for help for the day of the event, but we need help in advance. We also welcome volunteers for activities. Do you juggle? Perform magic tricks? Please sign up at the May 29 MLNA election meeting or email eventcoordinator@montaloma.org.

Block Parties are Happening!

One of things that makes Monta Loma special is our block parties; 13 were held last year. Both newcomers and long-timers appreciated the chance to get to know each other, and everyone is looking forward to a repeat this year.

The map at tinyurl.com/blkparty18 shows where the 2018 parties were held. If your street isn't highlighted, talk with your neighbors about organizing one. For how-to information go to montaloma.org and click on Block Parties under Events.



Swim at Greenmeadow's Pool

Spend the summer at the newly refurbished Greenmeadow Community Association pool, located in Palo Alto within easy walking or biking distance via the Nita/San Antonio crosswalk. This community swim club offers lap swimming, swim team, swim lessons, and family events for all ages at the beautiful, new clubhouse. Members have card-key access for easy, flexible use of the pool and clubhouse. Yoga and tai chi classes are also available at the club and park. You will meet many Monta Loma neighbors enjoying this nearby neighborhood gem.

Membership info is available at greenmeadow.org.



**Learn with Joy.
Grow with Empathy.
Explore with Confidence.**

*Discover how a bilingual education
can forever impact your child.*

We welcome you to visit us!

**Yew Chung International School
of Silicon Valley**

Preschool to Grade 8

www.ycis-sv.com

650 903 0986

admissions@sv.ycef.com



Monta Loma School News

How to help Monta Loma School

- Want to make an end of year donation to the PTA? To donate financially, email montalomapta@gmail.com. You can drop off checks in the office, or donate online via PayPal. Shopping with AmazonSmile supports our school, and box tops can also be dropped off in the school office.
- To keep kids safe from pets and their droppings, please refrain from bringing dogs onto campus and the park during school hours. These areas are closed during school hours. After hours, please clean up after your pet.

Monta Loma School traffic reminder

Plan around these school traffic times: 8:10 – 8:35, 1:50 – 2:10, and 3:00 – 3:30.
On Thursdays all students leave at 12:30.
The last day of school for Monta Loma is June 7.

New neighbors?

Look for the "New to Monta Loma?" link on the Home page at montaloma.org, then print a copy for your new neighbors.

Mobile Library

The Mobile Library stops at Monta Loma School every Thursday, from 4:15–5:00. It also stops on Jane at Fay on Fridays June 7, July 5, and August 6 from 9:45–10:15. For information or special requests, email Mobile.Library@mountainview.gov.

Register for Summer Classes

Pacific Ballet Academy

Learn to dance! Offering classes for all ages and levels



(650) 969-4614
www.pacificballet.org
295 Polaris Ave. Mountain View, CA

A BIG Thank You!

A special thank you goes out to **Marilyn Gildea**, our newsletter editor of the past 15 years who has decided it is time to retire. Her dedication to the role and all the connecting with the community that went along with it has made her a treasured member of our neighborhood.

Additional thanks to **Deborah Mills** for doing the newsletter layout so professionally in the past few years, her latest contribution to the neighborhood. The design of the logo on the CERT trailer is among her past contributions.

Google Bikes

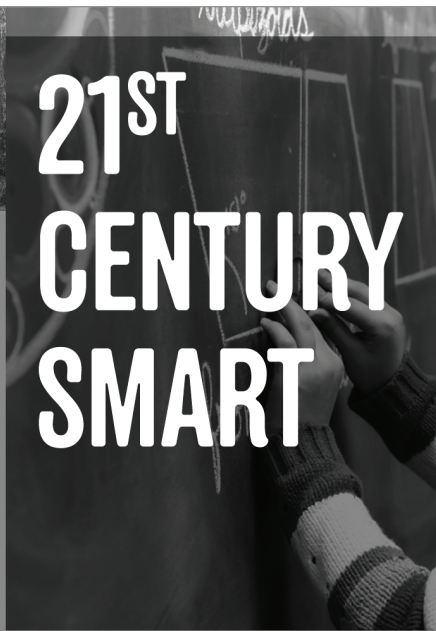
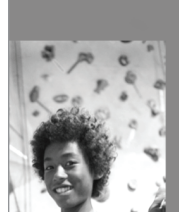
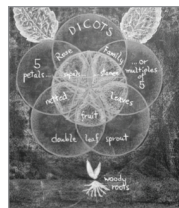
If you see a multi-color Google bike where it shouldn't be, please email its location and the time spotted to Lost Gbike at lostgbike@google.com so it can be retrieved.

Waymo Driverless Cars

Anyone with questions about Waymo cars on our neighborhood streets is encouraged to contact Waymo directly, waymo.com/contact/feedback before contacting John Canata, MLNA's traffic/parking liaison.

Thank You!

vecteezy.com



waldorfpenninsula.org
Nursery through High School



WALDORF
SCHOOL OF THE
PENINSULA

Successfully serving
Monta Loma for
more than 20 years



How can I help you?



Nancy Adele Stuhr



Mountain View Neighborhood Specialist

650.575.8300 email: nstuhr@serenogroup.com

web: nancystuhr.com | facebook.com/nancyadelestuhr

CalDRE #00963170



SHELLY POTVIN & MICHAEL SUTTON
YOUR MONTA LOMA TEAM



*Please remember we are always here
for all of your real estate needs...*

We have a variety of tried & true tradespeople, for example:
electrician, hardwood floor refinishing, painting, and many more!

Curious as to the current value of your home?

Refinance/Lender Referrals

BBQ tips (Michael is a Pitmaster for a cook-off team)

WANT TO BE IN THE KNOW?

Join your neighbors in receiving
our weekly email list that provides
you with the weeks worth of
real estate activity!

Go to: **YourMontaLomaTeam.com**
and click on 'join email list'



SHELLY POTVIN
(650) 303-7501
shelly@serenogroup.com
ShellyPotvin.com
DRE # 01236885

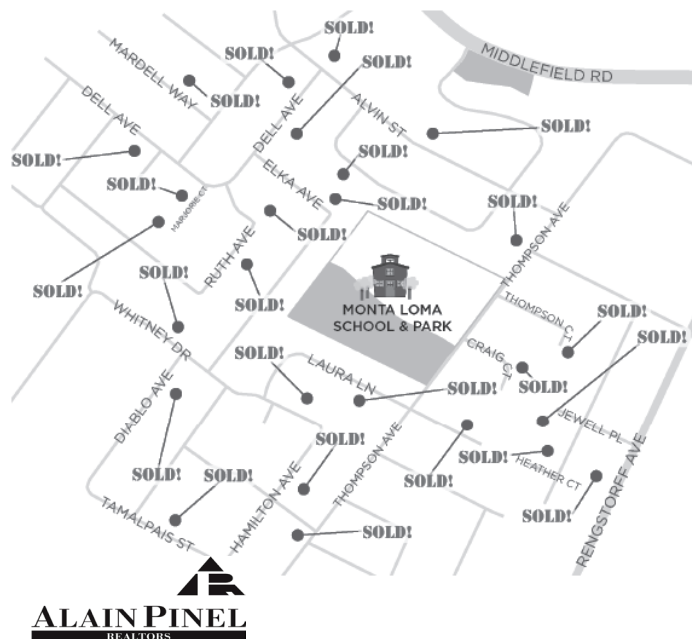


MICHAEL SUTTON
(650) 799-2253
sutton@serenogroup.com
MichaelSuttonRealtor.com
DRE # 01916467



CERTIFIED HOME MARKETING SPECIALIST

MONTA LOMA HOMES I HAVE SOLD



Sell with peace of mind

Lynne is an experienced agent who offers:

- **Personal, hands on service** through all aspects of preparation and sale.
- **Customized, targeted marketing** to maximize your profit.
- **A history of success** in your local market.

Take the first step towards your successful sale. CALL ME!!

LYNNE MERCER

License #00796211

Lmercer@apr.com

650.906.0162



Montessori
Hobbledehoy

Pre-school and Child
Development Center

Full- and part-time

Owner operated
since 1990

2321 Jane Lane
Mountain View, CA

650-968-1155

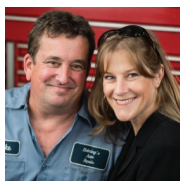
www.hobbledehoy.org

HELMING'S
AUTO REPAIR

Complete Car Care and Maintenance

Serving the Community Since 1976!

- Owned by a Monta Loma Family
- All Makes and Models
- Convenient 24-Hour Drop Off
- Certified Bay Area Green Business
- Superior Service You Can Trust
- A Certified Smog Check Facility
- Expert Diagnosis Using State-of-the-Art Equipment



Mike and Leane Reelfs, Owners



Helming's Auto Repair
2520-G Wyandotte Street
Mountain View, CA 94043

650/988-0460

www.helmings.com

*Become a fan of us
on Facebook to find
out about upcoming
car care seminars!*



**New Patients Welcome
Friendly Exceptional Service**

Shirley Irudayaraj DDS
877 W Fremont Ave Suite L1
Sunnyvale, CA 94087

Call **408 498 0244**

www.dovedentalsmiles.com

Connect with
Mountain View Police
and never miss a social beat!

Emergency: 9-1-1

Non-Emergency:
650-903-6395

www.mvdpd.gov

mountainviewpoliceblog.com

Facebook/
[mountainviewpolicedepartment](https://www.facebook.com/mountainviewpolicedepartment)