

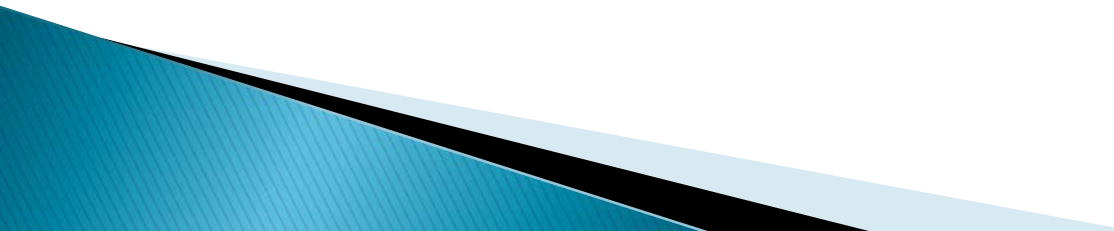
# **Mountain View Whisman School District Measure G Bond Program**

## **Monta Loma Elementary School Construction & Modernization**

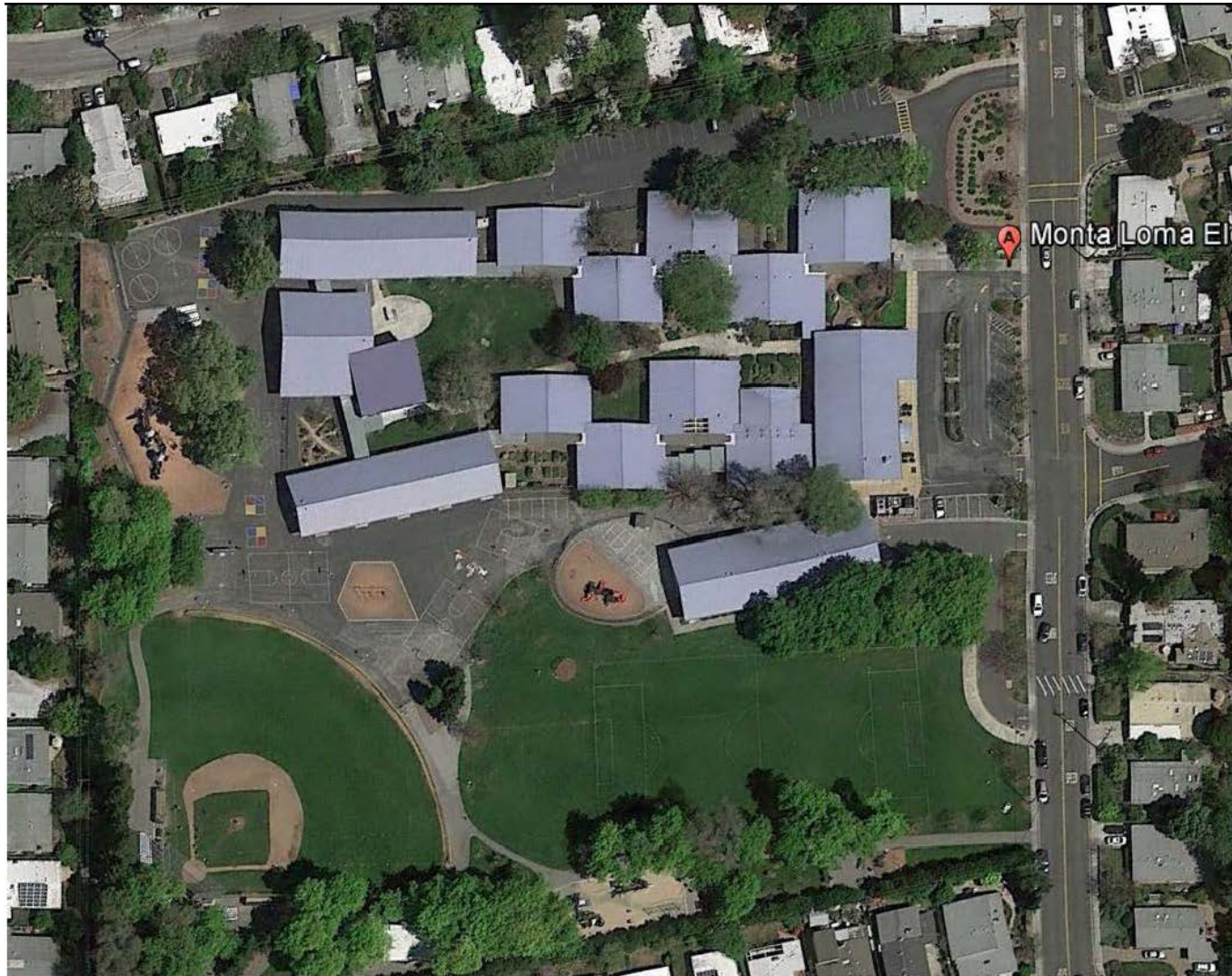
**June 2, 2016**



# Agenda

- ▶ Scope of Work
  - ▶ Schedule
  - ▶ Campus Impacts
  - ▶ Questions & Comments
- 

# Scope of Work



Existing Campus Plan



# Scope of Work



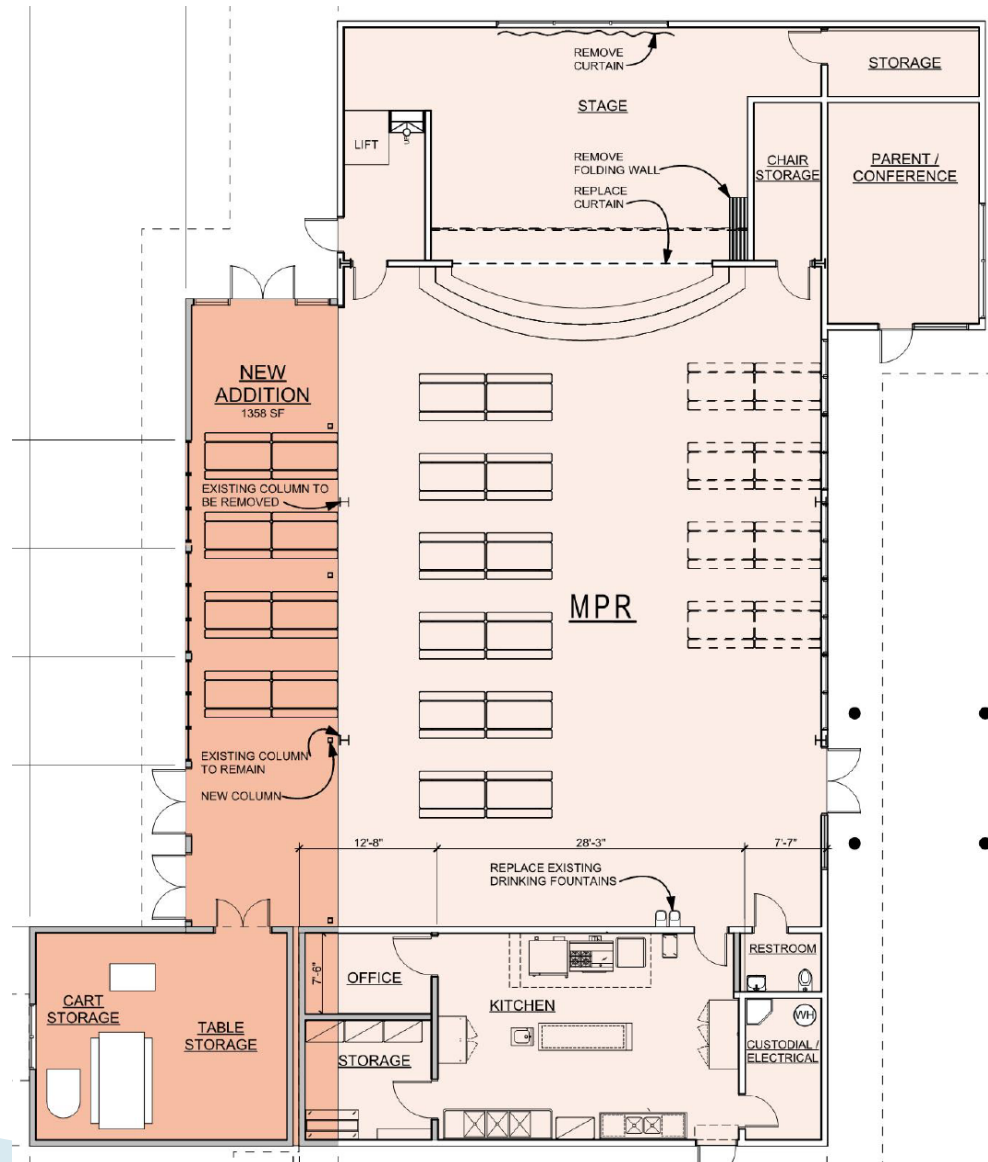
- NEW PORTABLE BUILDING
- EXPANSION & MODERNIZATION
- RESTROOM MODERNIZATION
- SITE IMPROVEMENTS
- CLASSROOM MODERNIZATION
- MINOR UPGRADES

# Scope of Work

- ▶ Expansion of Multipurpose Room (MPR)
  - Allow for ½ of students to eat inside MPR at one time
  - Allow for 450 students to attend assemblies
  - Improve food service operations
  - Increase storage capacity
- Requires demolition of 2 existing buildings (Rooms 5, 6, 7 & 8)
  - Will displace YMCA, Beyond-The-Bell, Speech and Intervention programs
    - YMCA and BTB will relocate to new permanent portable buildings
    - Speech will relocate to Library Building
    - Intervention program will relocate to Room 19

# Scope of Work

Expand and  
Modernize  
Multipurpose  
Room



# Scope of Work

- ▶ Accessibility and finish upgrades to main student restrooms (rooms 9/10 & 19/20)
- ▶ Extension of underground fire water line
  - Addition of 3 new fire hydrants
- ▶ Classroom Modernization
  - Updated finishes
  - Technology upgrades
  - New fire alarm system

# Schedule

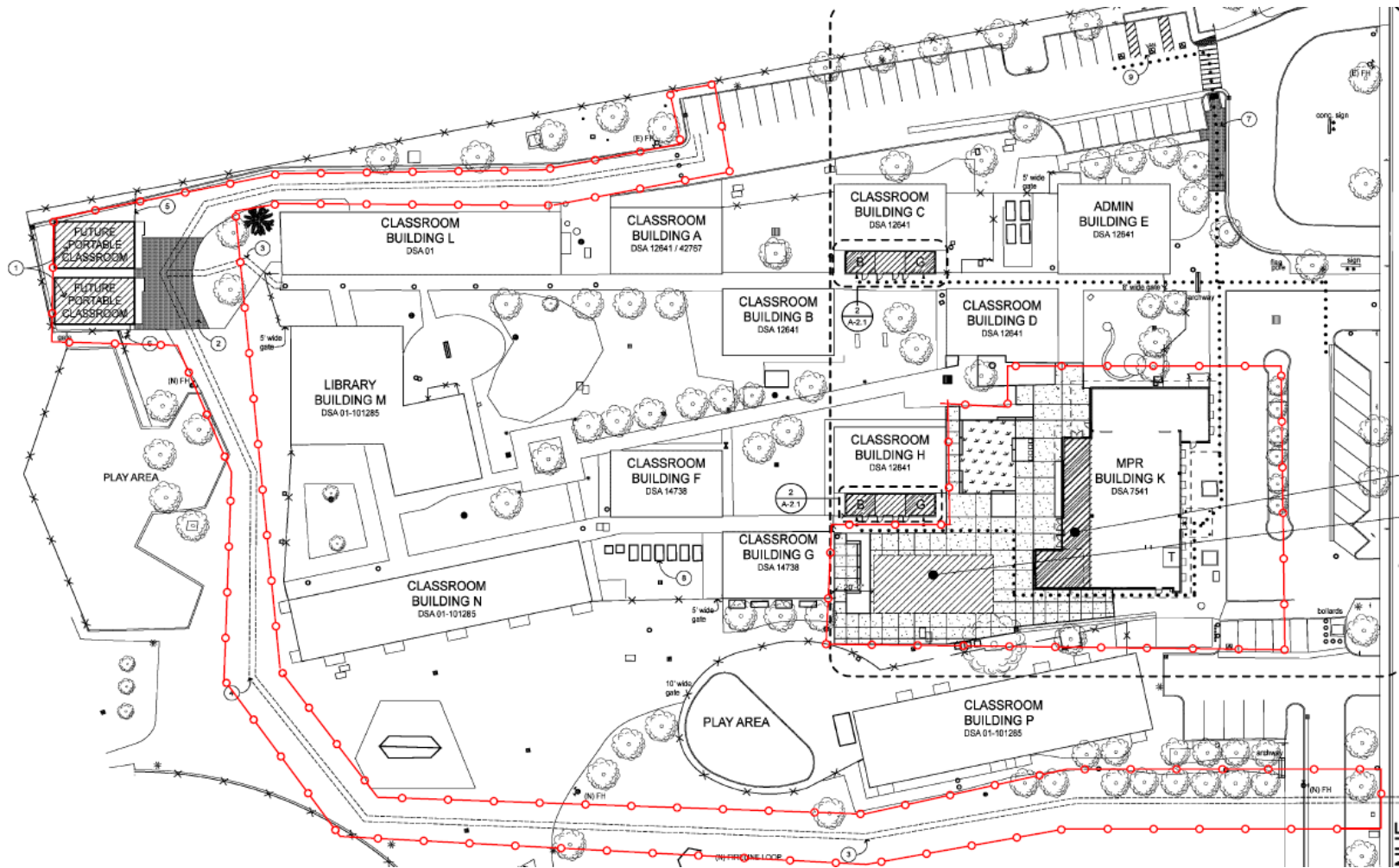
- ▶ Construction has been postponed 1 year due to a delay in project approval
- ▶ Summer 2017
  - Installation of new portable buildings
  - Student restroom upgrades
  - Fire line extension
  - Classroom modernization
- ▶ June 2017 – December 2017
  - Multipurpose Room (MPR) expansion
    - Food Service will be operational at start of school year in August 2017



# Campus Impacts

- ▶ **Construction Fencing**
  - Majority of campus will be closed Summer 2017
    - Grass field will remain open
- ▶ **Dust**
  - Water trucks will be used to mitigate dust
- ▶ **Noise**
  - Construction hours will be 7:00 am – 6:00 pm Monday - Friday
- ▶ **Construction Traffic & Parking**
  - Try to avoid conflicts with Drop-Off and Pick-Up times
  - Try to minimize on-street parking by contractors

# Campus Impacts



**Red line denotes construction fencing**